

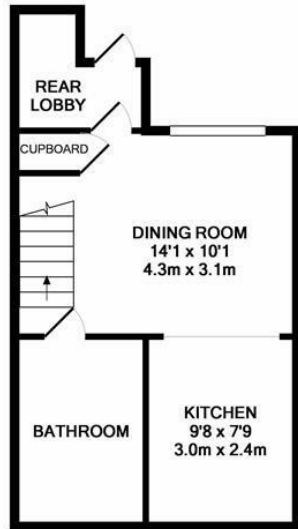


Plynlimmon Road, Hastings TN34 3LT

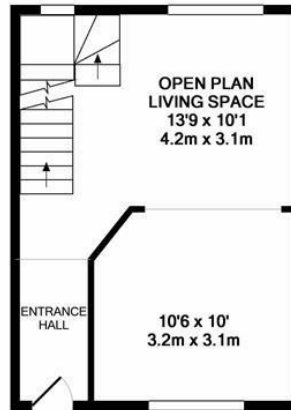
Offers in excess of £310,000



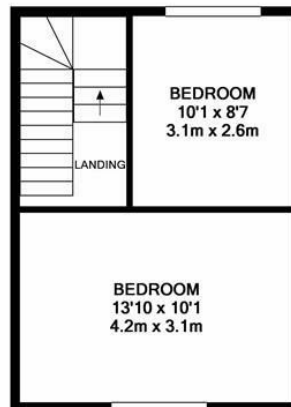
Three storey, TWO BEDROOM HOUSE set in a favoured spot on the WEST HILL. Being just a short stroll from the Old Town and Hastings Town centre it's ideally placed for LIFE AT THE SEASIDE. The accommodation here offers a really VERSATILE SPACE with the ground floor arranged as an OPEN PLAN LIVING AREA with fantastic views to the front and back. The kitchen and dining space are found on the lower level where there is a STYLISH and access out to the REAR COURTYARD. There is also a family bathroom with a bath and separate shower enclosure on this level too. TWO DOUBLE BEDROOMS sit on the on the top floor with FAR REACHING VIEWS across Hastings and down to the sea. Set in an UNRIVALLED POSITION and immaculately presented throughout this fab home is not one to be missed.



LOWER LEVEL
APPROX. FLOOR
AREA 323 SQ.FT.
(30.0 SQ.M.)



GROUND FLOOR
APPROX. FLOOR
AREA 291 SQ.FT.
(27.0 SQ.M.)



1ST FLOOR
APPROX. FLOOR
AREA 291 SQ.FT.
(27.0 SQ.M.)

TOTAL APPROX. FLOOR AREA 904 SQ.FT. (84.0 SQ.M.)

Whilst every attempt has been made to ensure the accuracy of the floor plan contained here, measurements of doors, windows, rooms and any other items are approximate and no responsibility is taken for any error, omission, or mis-statement. This plan is for illustrative purposes only and should be used as such by any prospective purchaser. The services, systems and appliances shown have not been tested and no guarantee as to their operability or efficiency can be given
Made with Metropix ©2018

