



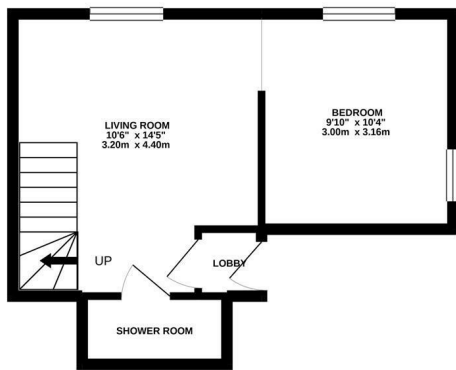
Grosvenor Gardens, St. Leonards-On-Sea TN38 0AG

Offers over £225,000

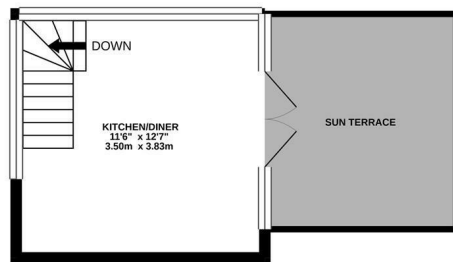


This unrivalled one-bedroomed apartment is ideally located in St. Leonards' to provide EXTENSIVE AND STUNNING WESTERLY VIEWS OF THE BEACH and shoreline, extending as far as Beachy Head. The apartment block is STEEPED IN HISTORY. Nestling in St Leonards, Grosvenor Gardens, it was originally designed by Samuel Sanders Teulon. During the 1930s, it became the Wilton House HOTEL, offering rooms with sea views and admission into the Olympic-sized and open-air swimming pool opposite for the princely sum of three guineas per week! The original hotel sign now takes pride of place in the apartment and the PAINTED HOTEL NUMBERS are clearly visible on the wall. This apartment has been SENSITIVELY REFURBISHED with finds from the county, an example of which is the shower room door, which is, as the story goes, from the Pullman train which carried Churchill to his final resting place. The apartment offers SPLIT-LEVEL ACCOMMODATION. A cosy, attractive living area with EXPOSED BRICKWORK also features chic wallpaper by renowned designer and St Leonards' local, Debbie Bowness. The bedroom enjoys a dual aspect, a

2ND FLOOR
321 sq.ft. (29.8 sq.m.) approx.



3RD FLOOR
160 sq.ft. (14.9 sq.m.) approx.



TOTAL FLOOR AREA : 481 sq.ft. (44.7 sq.m.) approx.

Whilst every attempt has been made to ensure the accuracy of the floorplan contained here, measurements of doors, windows, rooms and any other items are approximate and no responsibility is taken for any error, omission or mis-statement. This plan is for illustrative purposes only and should be used as such by any prospective purchaser. The services, systems and appliances shown have not been tested and no guarantee as to their operability or efficiency can be given.
Made with Metropix. ©2020

