



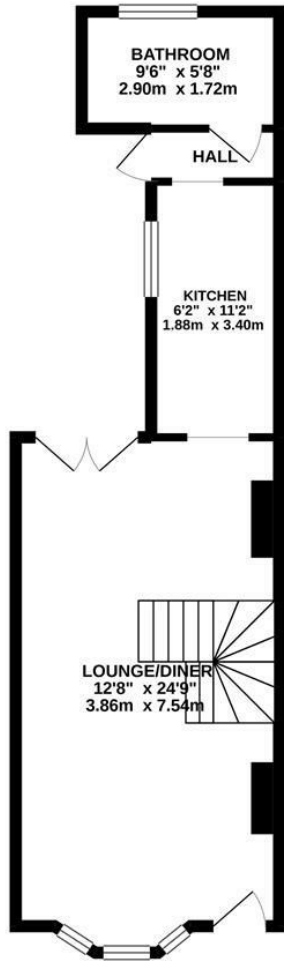
St. Georges Road, Hastings TN34 3NF

Offers in excess of £170,000

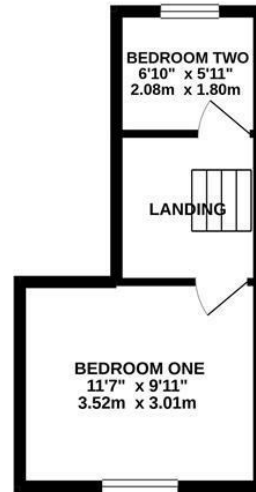


The COTTAGE style terrace home is positioned for access to the WEST HILL. Just a short stroll to the Old Town and Hastings Town Centre. The GENEROUS ACCOMMODATION here spans two storeys with a BAY FRONTED LIVING ROOM DINER and two bedrooms. The kitchen sits at the rear of the property, there is a rear lobby leading to the bathroom. The enclosed REAR GARDEN enjoys the afternoon sun and is accessed via patio doors from the dining room.

GROUND FLOOR
451 sq. ft. (41.9 sq. m.) approx.



1ST FLOOR
204 sq. ft. (19.0 sq. m.) approx.



TOTAL FLOOR AREA: 655 sq. ft. (60.9 sq. m.) approx.

Whilst every attempt has been made to ensure the accuracy of the floorplan contained here, measurements of doors, windows, rooms and any other items are approximate and no responsibility is taken for any error, omission or mis-statement. This plan is for illustrative purposes only and should be used as such by any prospective purchaser. The services, systems and appliances shown have not been tested and no guarantee as to their operability or efficiency can be given.
Made with Metropix ©2019

