

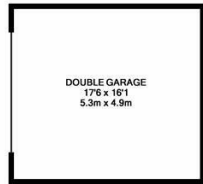


Mount Pleasant Road, Hastings TN34 3SH

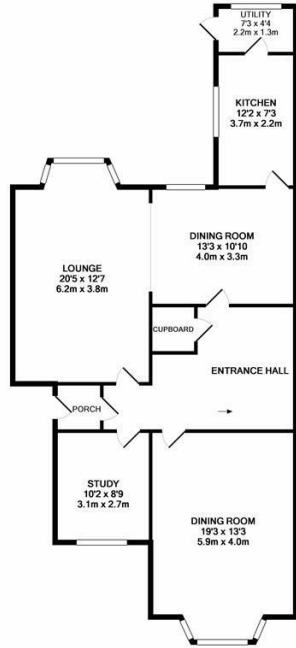
Offers in excess of £440,000



Imposing semi-detached, CHARACTER HOUSE set on a double width plot and benefitting from a ONE BEDROOM SELF CONTAINED APARTMENT. Spanning FOUR SPACIOUS FLOORS the accommodation here is handsomely proportioned and offers four/five reception rooms and SIX BEDROOMS which enjoy far reaching TOWN AND SEA VIEWS from the rear. At the front there is a DRIVEWAY providing off road parking for multiple vehicles and giving access to the DOUBLE GARAGE. Being sold CHAIN FREE and with a LARGE LOFT SPACE this fantastic property offers HEAPS OF POTENTIAL for somebody to add their own personality and create their forever home.



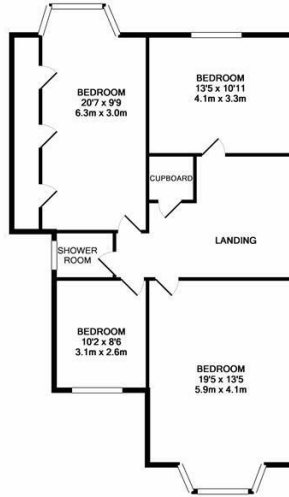
GARAGE  
APPROX. FLOOR  
AREA 261 SQ. FT.  
(26.1 SQ. M.)



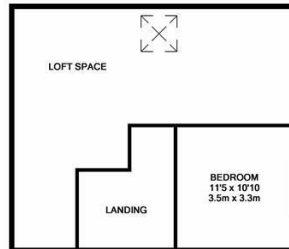
GROUND FLOOR  
APPROX. FLOOR  
AREA 1025 SQ. FT.  
(95.2 SQ. M.)

TOTAL APPROX. FLOOR AREA 3652 SQ. FT. (339.3 SQ. M.)

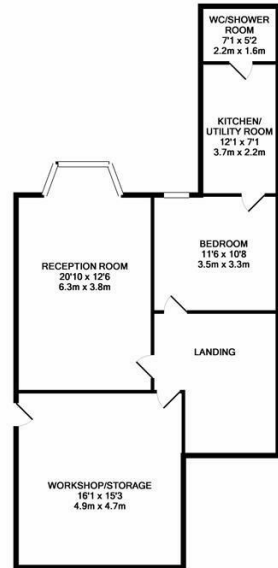
Whilst every attempt has been made to ensure the accuracy of the floor plan contained here, measurements of doors, windows, rooms and any other items are approximate and no responsibility is taken for any error, omission, or mis-statement. This plan is for illustrative purposes only and should be used as such by any prospective purchaser. The services, systems and appliances shown have not been tested and no guarantee as to their operability or efficiency can be given.  
Made with Metaplan (2015)



1ST FLOOR  
APPROX. FLOOR  
AREA 805 SQ. FT.  
(84.1 SQ. M.)



2ND FLOOR  
APPROX. FLOOR  
AREA 575 SQ. FT.  
(53.4 SQ. M.)



3RD FLOOR  
APPROX. FLOOR  
AREA 866 SQ. FT.  
(80.5 SQ. M.)

