

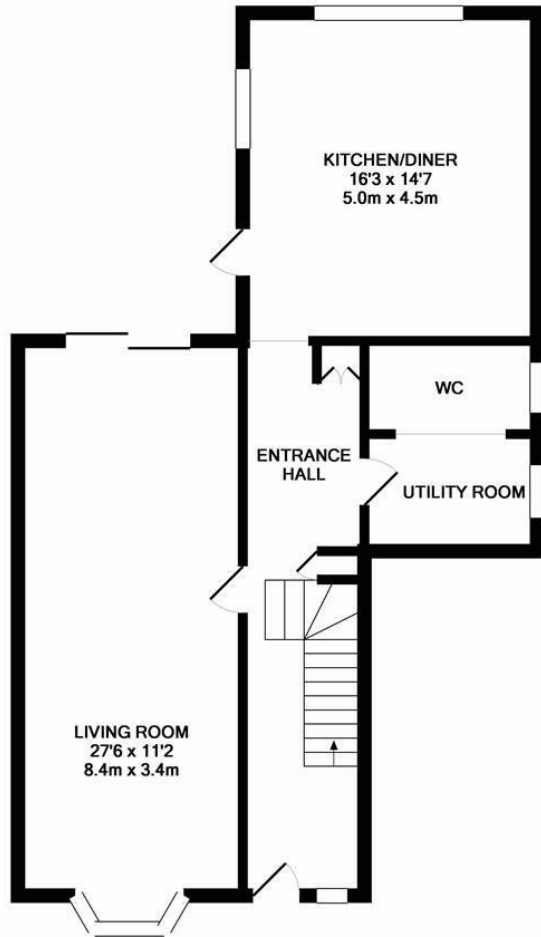


Main Road, Hastings TN35 4QE

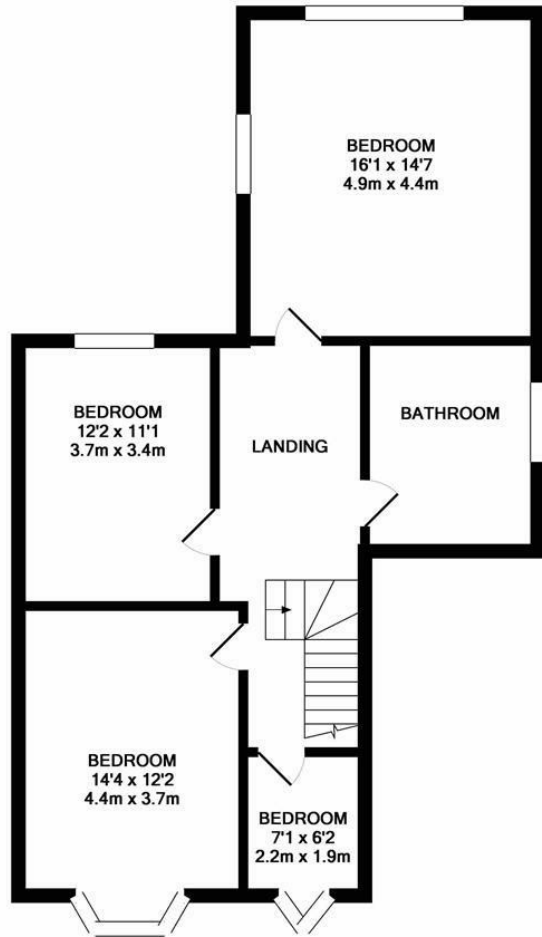
Offers in excess of £390,000



Set in the heart of WESTFIELD VILLAGE, this attractive FOUR BEDROOM, family home is positioned close to local schooling, amenities and within easy access to Hastings and the A21. The HANDSOMELY PROPORTIONED ACCOMMODATION here has been greatly improved by the sellers to enjoy a CONTEMPORARY KITCHEN/BREAKFAST ROOM and a separate living space which offers plenty of space for a dining table and sliding doors out to the enclosed rear garden. There is also a downstairs cloakroom and a UTILITY ROOM. On the first floor are THREE DOUBLE BEDROOMS and a single bedroom served by a family bathroom with a bath and separate shower enclosure. Sat in the centre of its plot with a wrap around, FAMILY FRIENDLY GARDEN and OFF ROAD PARKING for multiple cars to the front this fab house is not to be missed.



GROUND FLOOR  
APPROX. FLOOR  
AREA 807 SQ.FT.  
(75.0 SQ.M.)



1ST FLOOR  
APPROX. FLOOR  
AREA 809 SQ.FT.  
(75.2 SQ.M.)

TOTAL APPROX. FLOOR AREA 1617 SQ.FT. (150.2 SQ.M.)

Whilst every attempt has been made to ensure the accuracy of the floor plan contained here, measurements of doors, windows, rooms and any other items are approximate and no responsibility is taken for any error, omission, or mis-statement. This plan is for illustrative purposes only and should be used as such by any prospective purchaser. The services, systems and appliances shown have not been tested and no guarantee as to their operability or efficiency can be given  
Made with Metropix ©2018

