



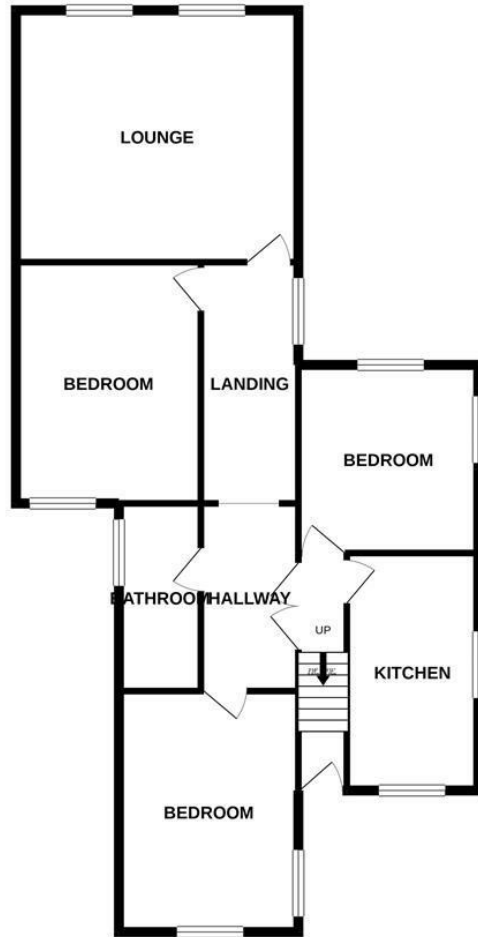
Quarry Road, Hastings TN34 3SA

Offers in excess of £260,000



Elegant THREE BEDROOM apartment set on the FIRST FLOOR of this period building, Found just moments from Alexandra Park, enjoying a PRIVATE REAR GARDEN and stunning SEA VIEWS it's the perfect coastal retreat. The QUIRKY AND CHARACTERFUL accommodation here enjoys GENEROUS PROPORTIONS with the living space enjoying two windows with a front aspect and a beautiful outlook. There is a separate kitchen with stylish units and a leafy dual aspect. The THREE BEDROOMS are served by a BEAUTIFUL BATHROOM where there is a bath with a shower over. The ENCLOSED REAR GARDEN is a particular feature with a shed and a large expanse of lawn, being sold with an OFF ROAD PARKING SPACE it's not to be missed.

GROUND FLOOR
1013 sq.ft. (94.1 sq.m.) approx.



TOTAL FLOOR AREA : 1013 sq.ft. (94.1 sq.m.) approx.

Whilst every attempt has been made to ensure the accuracy of the floorplan contained here, measurements of doors, windows, rooms and any other items are approximate and no responsibility is taken for any error, omission or mis-statement. This plan is for illustrative purposes only and should be used as such by any prospective purchaser. The services, systems and appliances shown have not been tested and no guarantee as to their operability or efficiency can be given.
Made with Metropix ©2020

