



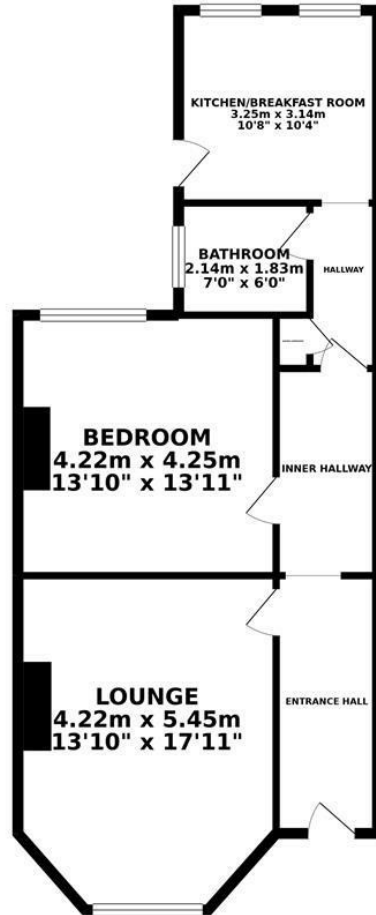
St. Margarets Road, St. Leonards-On-Sea TN37 6EH

Offers in excess of £150,000



Generous one bedroom apartment enjoying its OWN ENTRANCE and PRIVATE REAR GARDEN. The accommodation here offers a living space with a BAY WINDOW to the front aspect while the EAT IN KITCHEN sits at the rear with access out to the garden. There is a well proportioned double bedroom and a fitted bathroom. Being sold with a share of freehold and positioned close to local amenities, Warrior Square and the beach this fantastic pad is perfectly suited for SEASIDE LIVING.

GROUND FLOOR 69.72 sq. m.
(750.48 sq. ft.)



TOTAL FLOOR AREA : 69.72 sq. m. (750.48 sq. ft.) approx.

Whilst every attempt has been made to ensure the accuracy of the floorplan contained here, measurements of doors, windows, rooms and any other items are approximate and no responsibility is taken for any error, omission or mis-statement. This plan is for illustrative purposes only and should be used as such by any prospective purchaser. The services, systems and appliances shown have not been tested and no guarantee as to their operability or efficiency can be given.
Made with Metropix ©2019

