



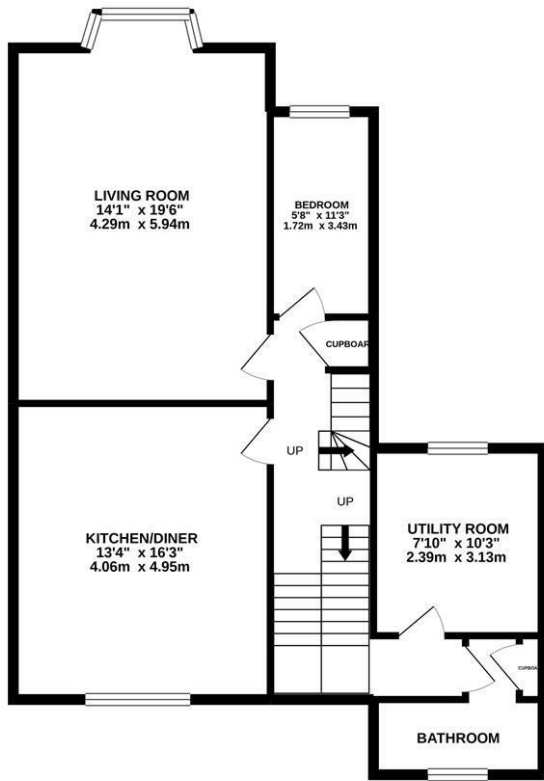
Bohemia Road, St. Leonards-On-Sea TN37 6RA

Offers in excess of £240,000

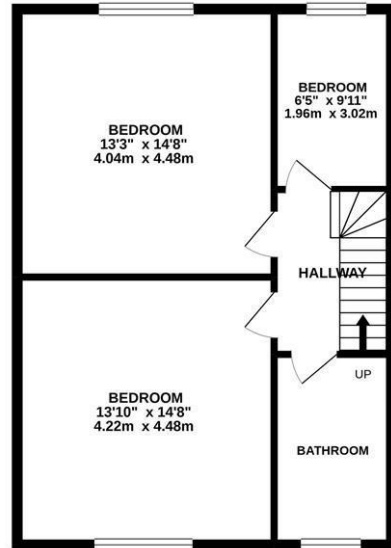


Spacious FOUR BEDROOM MAISONETTE set in a favoured position in Hastings close to Alexandra Park and both Hastings and St. Leonards centre. The accommodation here SPANS TWO LARGE FLOORS, the living room enjoys a BAY WINDOW with a front aspect and a GENEROUS EAT IN KITCHEN measuring 16'3 x 14'3, it boasts a SEPARATE UTILITY ROOM. One bedroom, which is currently used as a home office, and a bathroom also sit on this level. There are a further three bedrooms found on the upper floor along with a family bathroom. With STUNNING GREEN VIEWS and CHARACTER FEATURES THROUGHOUT this would make the perfect seaside home.

GROUND FLOOR
862 sq.ft. (80.1 sq.m.) approx.



1ST FLOOR
603 sq.ft. (56.0 sq.m.) approx.



TOTAL FLOOR AREA: 1466 sq.ft. (136.2 sq.m.) approx.

Whilst every attempt has been made to ensure the accuracy of the floorplan contained here, measurements of doors, windows, rooms and any other items are approximate and no responsibility is taken for any error, omission or mis-statement. This plan is for illustrative purposes only and should be used as such by any prospective purchaser. The services, systems and appliances shown have not been tested and no guarantee as to their operability or efficiency can be given.
Made with Metropix ©2020

