



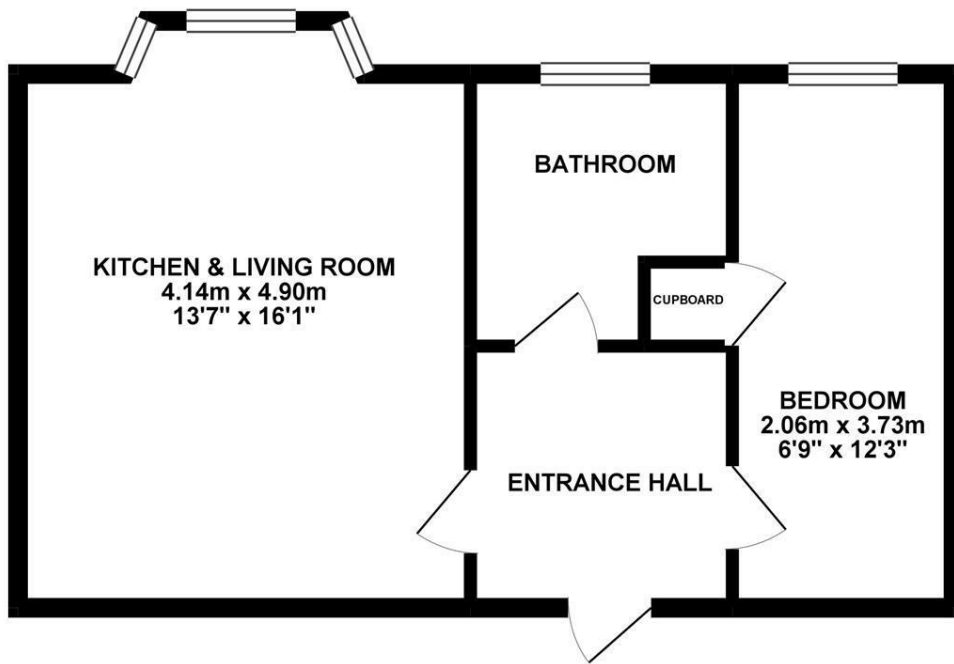
Laton Road, Hastings TN34 2ES

Offers in excess of £130,000



Beautiful ONE BEDROOM, ground floor apartment set within this striking characterful building just moments from Alexandra Park. The OPEN PLAN LIVING AND KITCHEN SPACE here offers the perfect accommodation for those looking for their first time home or a seaside retreat. The apartment has been tastefully decorated with a neutral palette throughout with a NEWLY FITTED KITCHEN and a CONTEMPORARY BATH ROOM. Externally there are large communal gardens. Being sold with residents parking, NO ONWARD CHAIN and a new lease, this is not one to be missed.

GROUND FLOOR 42.89 sq. m.
(461.71 sq. ft.)



TOTAL FLOOR AREA : 42.89 sq. m. (461.71 sq. ft.) approx.

Whilst every attempt has been made to ensure the accuracy of the floorplan contained here, measurements of doors, windows, rooms and any other items are approximate and no responsibility is taken for any error, omission or mis-statement. This plan is for illustrative purposes only and should be used as such by any prospective purchaser. The services, systems and appliances shown have not been tested and no guarantee as to their operability or efficiency can be given.
Made with Metropix ©2019

