



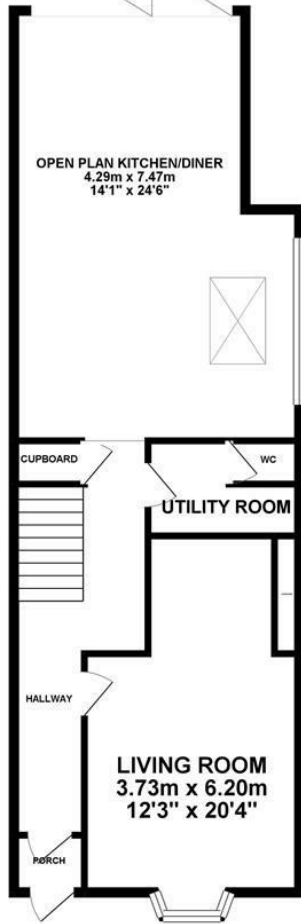
Edmund Road, Hastings TN35 5LQ

Offers in excess of £330,000

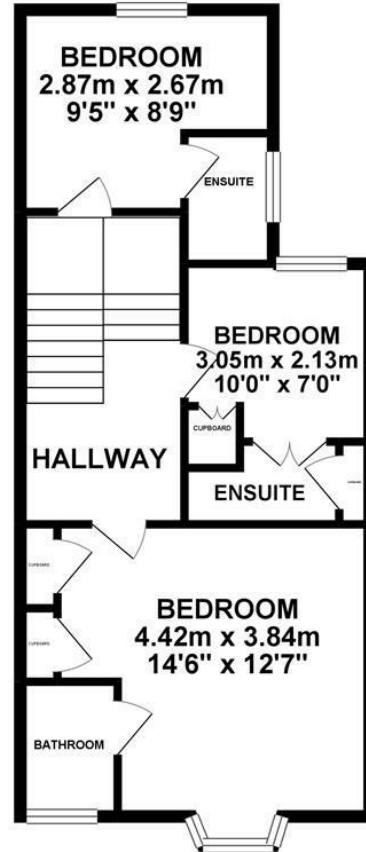


Handsomen THREE BEDROOM home found in a highly desired spot in CLIVE VALE just a short stroll from Hastings Old Town. The accommodation here has undergone significant refurbishment to now offer a GORGEOUS HOME ideally suited to family life. The CONTEMPORARY OPEN PLAN KITCHEN and dining space must get a special mention; it is meticulous, with FRENCH DOORS opening onto the sunny rear garden. No expense has been spared to create this fantastic home, there are plenty of power points throughout with USB ports and INTEGRATED APPLIANCES including a downdraught extractor, 2x single NEFF ovens and a NEFF induction hob. There is also a handy UTILIY ROOM and downstairs cloakroom. The BAY FRONTED LIVING ROOM provides a great alternative and cosy space with a working fireplace. There are three bedrooms sat on the first floor all of which benefits from NEWLY FITTED ENSUITE'S, the master bedroom is generously proportioned and enjoys built in storage. The ENCLOSED REAR GARDEN features a raised deck and a level lawned area, it's a fantastic spot for Summer BBQ's.

GROUND FLOOR 72.97 sq. m.
(785.45 sq. ft.)



1ST FLOOR 52.16 sq. m.
(561.45 sq. ft.)



TOTAL FLOOR AREA : 125.13 sq. m. (1346.90 sq. ft.) approx.

Whilst every attempt has been made to ensure the accuracy of the floorplan contained here, measurements of doors, windows, rooms and any other items are approximate and no responsibility is taken for any error, omission or mis-statement. This plan is for illustrative purposes only and should be used as such by any prospective purchaser. The services, systems and appliances shown have not been tested and no guarantee as to their operability or efficiency can be given.
Made with Metropix ©2019

