

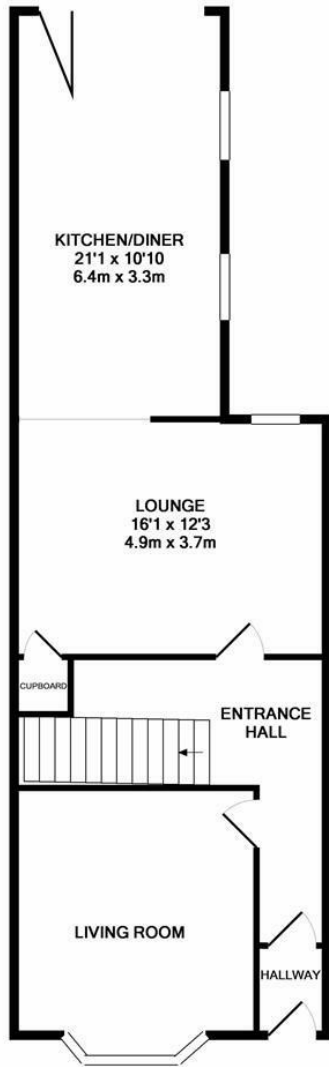


Ashburnham Road, Hastings TN35 5LJ

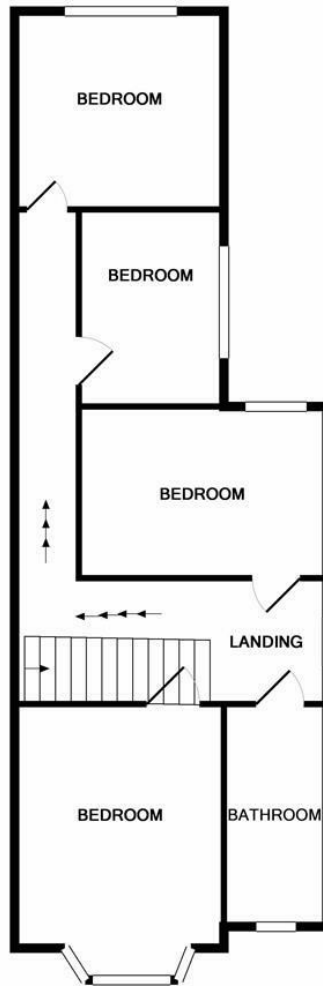
Offers in excess of £385,000



Found on the CUSP OF THE OLD TOWN & Clive Vale, this handsome home is ideally positioned for seaside living. Enjoying well proportioned rooms and open plan style accommodation on the ground floor which offers the PERFECT SPACE FOR FAMILY LIFE. The bay fronted living room boasts CHARACTER FEATURES has a fireplace perfect for a log burner. Acting as the hub of the home the OPEN PLAN KITCHEN has been extended by the current sellers and offers plenty of space for a dining table with bi-folding doors which frame the GORGEOUS REAR GARDENS. The FOUR BEDROOMS and large family bathroom sit on the first floor.



GROUND FLOOR  
APPROX. FLOOR  
AREA 749 SQ.FT.  
(69.5 SQ.M.)



1ST FLOOR  
APPROX. FLOOR  
AREA 674 SQ.FT.  
(62.6 SQ.M.)

TOTAL APPROX. FLOOR AREA 1423 SQ.FT. (132.2 SQ.M.)

Whilst every attempt has been made to ensure the accuracy of the floor plan contained here, measurements of doors, windows, rooms and any other items are approximate and no responsibility is taken for any error, omission, or mis-statement. This plan is for illustrative purposes only and should be used as such by any prospective purchaser. The services, systems and appliances shown have not been tested and no guarantee as to their operability or efficiency can be given  
Made with Metropix ©2018

