



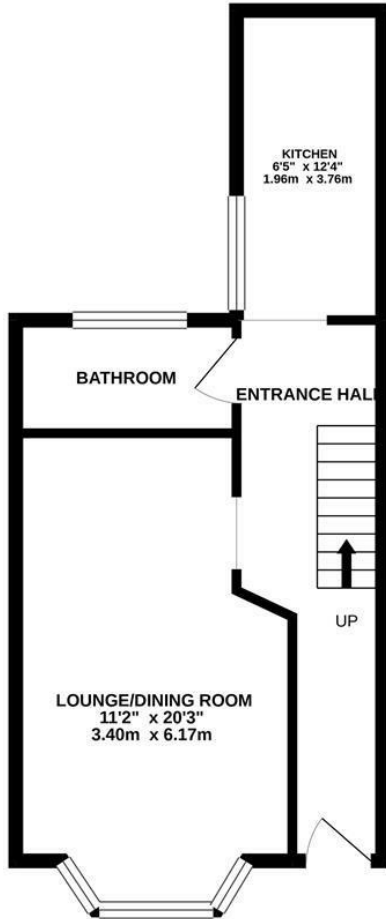
Saxon Road, Hastings TN35 5HP

Offers in excess of £225,000

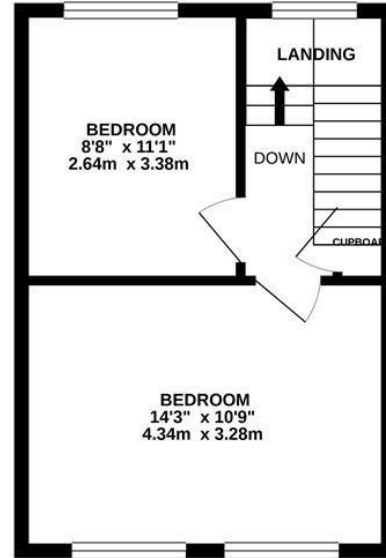


Two bedroom TERRACED HOUSE located in a favoured CLIVE VALE location, within easy reach of Ore Village, local Schools and Hastings Old Town. The accommodation here spans two storeys with an OPEN PLAN LIVING AND DINING AREA and a separate CONTEMPORARY KITCHEN at the rear. The TWO DOUBLE BEDROOMS sit on the first floor with a family bathroom on the ground floor. The rear garden here has been designed for LOW MAINTENANCE with a decked area creating a wonderful spot entertaining. PRESENTED TO A HIGH STANDARD and enjoying generous proportions throughout this fantastic property would make the PERFECT FIRST TIME HOME.

GROUND FLOOR
402 sq.ft. (37.3 sq.m.) approx.



1ST FLOOR
318 sq.ft. (29.5 sq.m.) approx.



TOTAL FLOOR AREA : 720 sq.ft. (66.8 sq.m.) approx.

Whilst every attempt has been made to ensure the accuracy of the floorplan contained here, measurements of doors, windows, rooms and any other items are approximate and no responsibility is taken for any error, omission or mis-statement. This plan is for illustrative purposes only and should be used as such by any prospective purchaser. The services, systems and appliances shown have not been tested and no guarantee as to their operability or efficiency can be given.
Made with Metropix ©2020

