

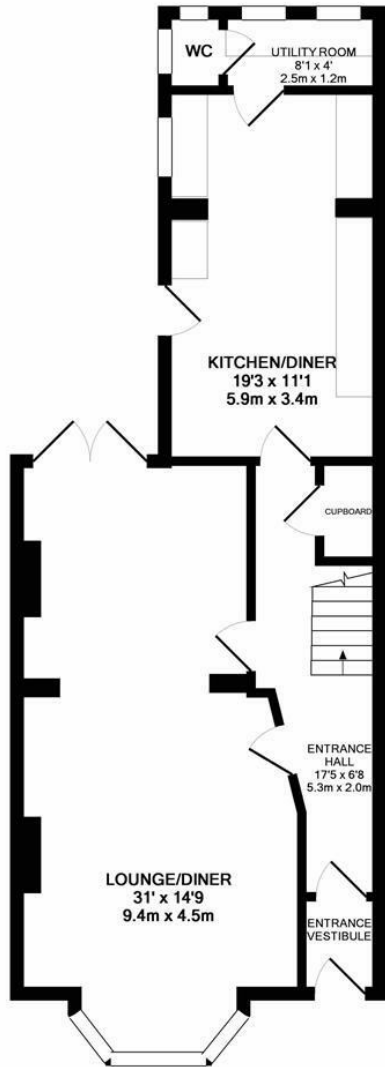


Lower Park Road, Hastings TN34 2LB

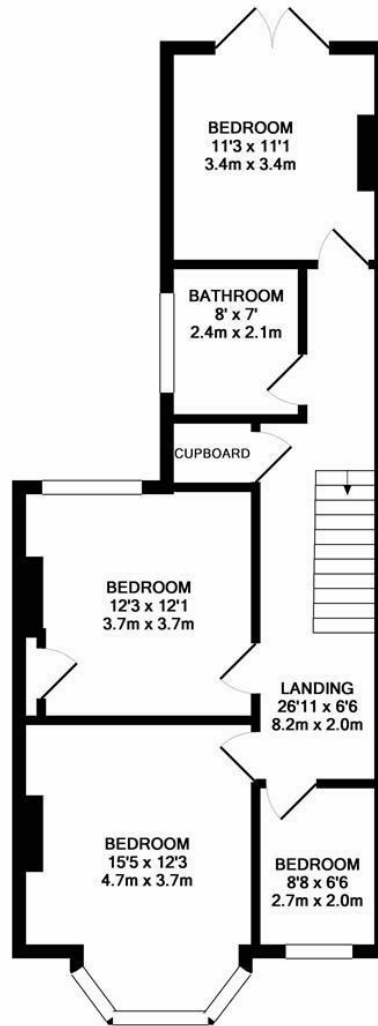
£470,000



Beautiful FOUR BEDROOM character home set adjacent to the picturesque ALEXANDRA PARK, just a short stroll from Hastings Town Centre with its mainline railway station. With GRAND PROPORTIONS the ground floor is arranged as a BAY FRONTED LIVING AND DINING SPACE with fitted shutters and a working log burner and a HANDSOMELY PROPORTIONED EAT IN KITCHEN with a separate utility and downstairs cloakroom, there is also access out to an enclosed courtyard perfect for dining al-fresco. There are FOUR BEDROOMS, three of which are double rooms, found on the first floor along with a family bathroom. The rear bedroom ENJOYS ACCESS OUT TO A PRIVATE RAISED DECK which is a tranquil sun trap. The garden here is set over ascending levels and planted with LOW MAINTENANCE shrubs, giving a sense of SECLUSION AND PRIVACY. Neighbouring properties have built a cosy studio on the upper garden level, which could be mirrored with this home and would be a great addition for those needing a home office. Styled with NATURAL TONES throughout and presented to an EXCEPTIONAL STANDARD this family home is not to be missed.



GROUND FLOOR
APPROX. FLOOR
AREA 800 SQ.FT.
(74.3 SQ.M.)



1ST FLOOR
APPROX. FLOOR
AREA 728 SQ.FT.
(67.7 SQ.M.)

TOTAL APPROX. FLOOR AREA 1528 SQ.FT. (142.0 SQ.M.)

Whilst every attempt has been made to ensure the accuracy of the floor plan contained here, measurements of doors, windows, rooms and any other items are approximate and no responsibility is taken for any error, omission, or mis-statement. This plan is for illustrative purposes only and should be used as such by any prospective purchaser. The services, systems and appliances shown have not been tested and no guarantee as to their operability or efficiency can be given
Made with Metropix ©2019

