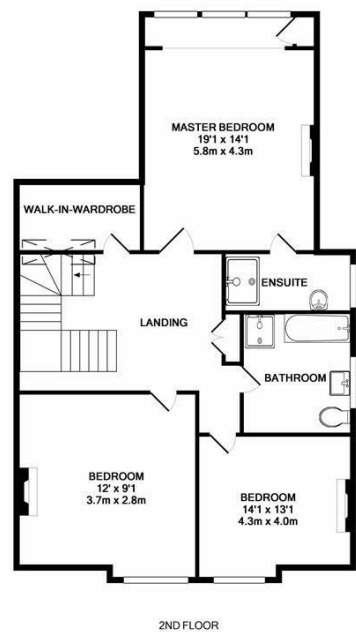
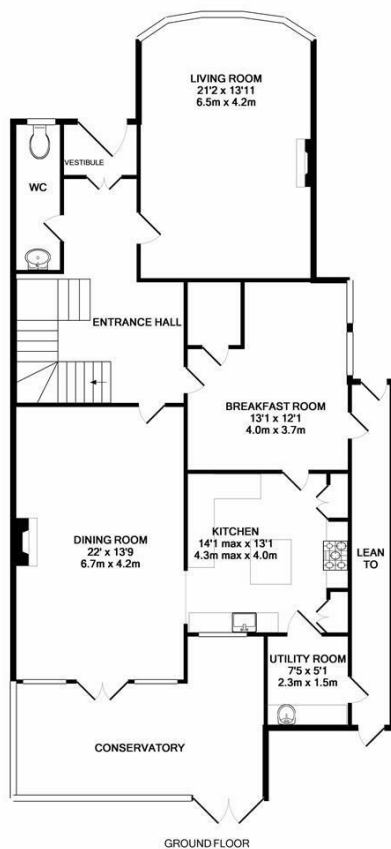


## Tower Road West, St. Leonards-On-Sea TN38 0RJ

Offers in excess of £650,000



We adore this handsome Victorian home, the bay fronted accommodation here spans over three floors. Found in a favoured street in St. Leonards, this stunning home is ideally located for access to local shops, eateries and St. Leonards mainline railway station. Packed with period character and charm the living room enjoys an open fireplace and original floorboards, the dining room leads through to the well equipped kitchen and has doors opening on to the conservatory too. Being south facing the rear garden is an absolute sun trap creating the perfect space to dine al fresco. Two of the 6 bedrooms are served by en-suite bathrooms, in addition to this there is a family bathroom on each floor as well as a generous study which could be used as bedroom 7. To the front of the property is a driveway providing off road parking.



Whilst every attempt has been made to ensure the accuracy of the floor plan contained here, measurements of doors, windows, rooms and any other items are approximate and no responsibility is taken for any error, omission, or mis-statement. This plan is for illustrative purposes only and should be used as such by any prospective purchaser. The services, systems and appliances shown have not been tested and no guarantee as to their operability or efficiency can be given.  
Made with Metropix i2018

