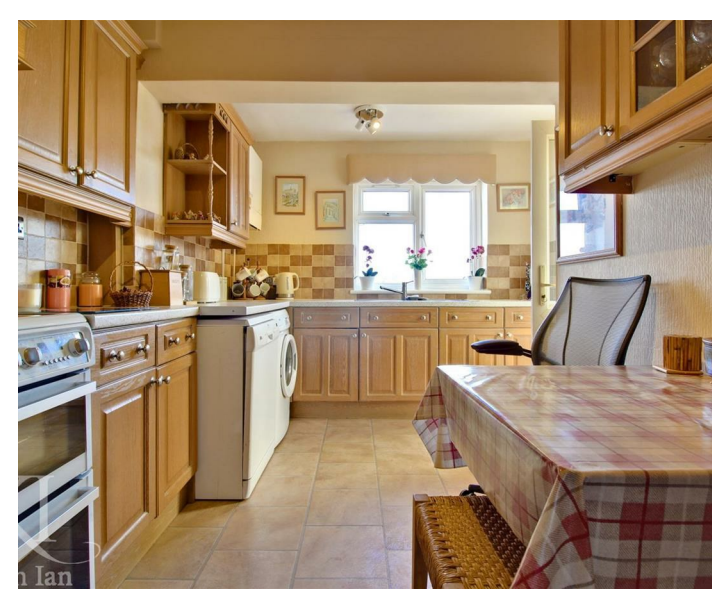




KI Keith Ian

Richmond Close, Ware, SG12 0EN
Asking Price £550,000



Richmond Close, Ware, SG12 0EN

SELLER WILL VACATE - NO UPWARD CHAIN

Keith Ian are delighted to offer this deceptively spacious family home is situated in this sort after cul-de-sac in Ware.

Accommodation comprises a welcoming hallway, two large reception rooms, kitchen, conservatory, utility/shower room and WC to the ground floor plus four generously sized bedrooms to the first floor. Further benefits include a well maintained private rear garden with a large patio area.

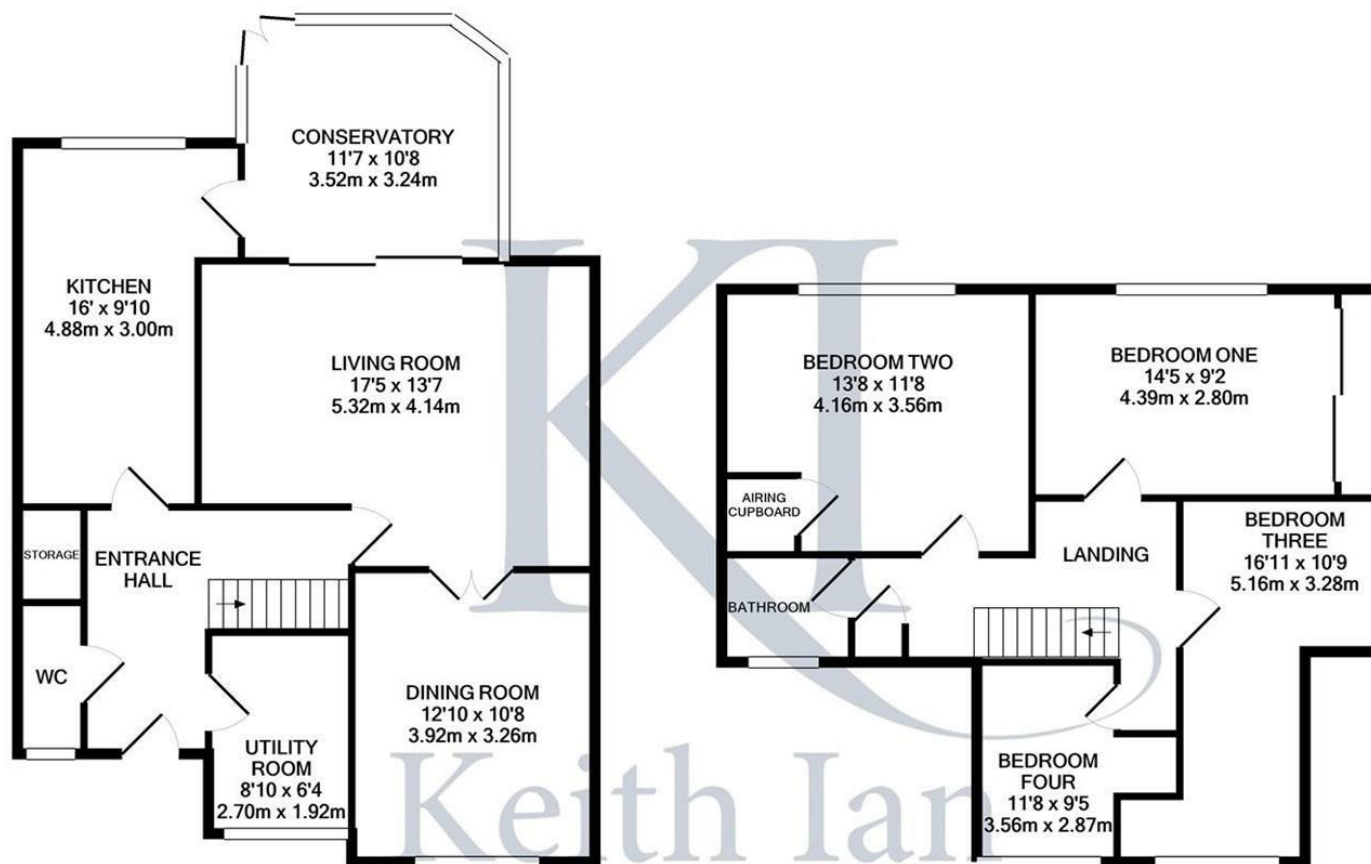
The front garden has potential for off street parking, gated side access to rear and there is a GARAGE en-bloc.

Situated within easy access to the town, A10, railway station and schools.



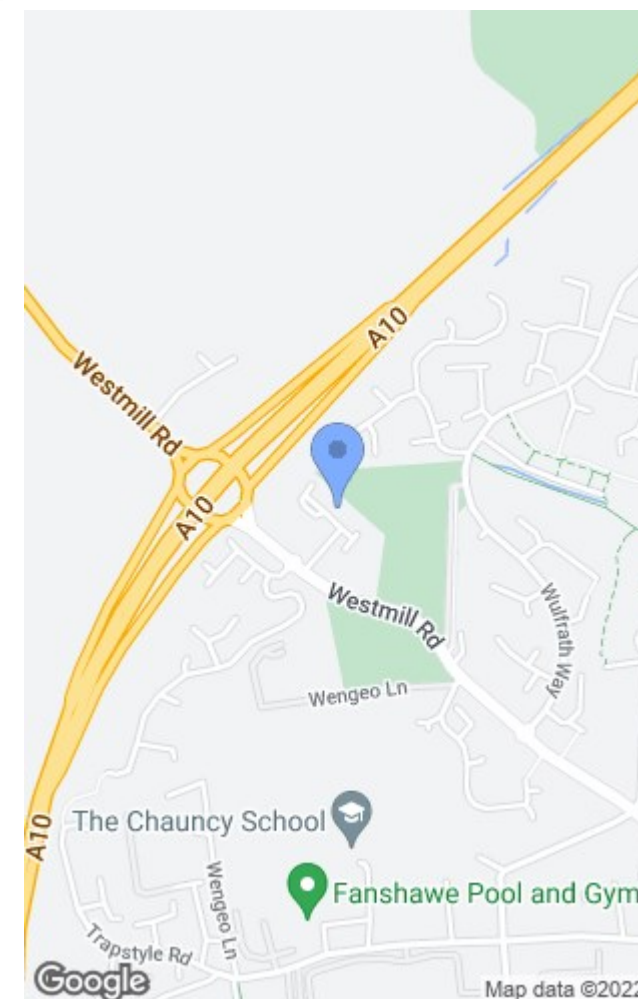






Whilst every attempt has been made to ensure the accuracy of the floor plan contained here, measurements of doors, windows, rooms and any other items are approximate and no responsibility is taken for any error, omission, or mis-statement. This plan is for illustrative purposes only and should be used as such by any prospective purchaser. The services, systems and appliances shown have not been tested and no guarantee as to their operability or efficiency can be given
 Made with Metropix ©2021

These particulars are believed to be correct but their accuracy is not guaranteed and they do not form part of any contract. Whilst every effort is made to ensure the accuracy of these details, it should be noted that the above measurements are approximate only. Any internal photographs are intended as a guide only and it should not be assumed that any of the furniture/fittings are included in any sale. Where shown, details of lease, ground rent and service charge are provided by the vendor and their accuracy cannot be guaranteed, as the information may not have been verified and further checks should be made either through your solicitor. Where appliances, including central heating, are mentioned, it cannot be assumed that they are in working order, as they have not been tested. Please also note that wiring, plumbing and drains have not been checked.



Energy Efficiency Rating		
	Current	Potential
Very energy efficient - lower running costs		
(92 plus) A		
(81-91) B		
(69-80) C		
(55-68) D		
(39-54) E		
(21-38) F		
(1-20) G		
Not energy efficient - higher running costs		
England & Wales	EU Directive 2002/91/EC	

Environmental Impact (CO ₂) Rating		
	Current	Potential
Very environmentally friendly - lower CO ₂ emissions		
(92 plus) A		
(81-91) B		
(69-80) C		
(55-68) D		
(39-54) E		
(21-38) F		
(1-20) G		
Not environmentally friendly - higher CO ₂ emissions		
England & Wales	EU Directive 2002/91/EC	

T: 01992 640505
 cheshunt@keithian.com
 www.keithian.com



Offices at Cheshunt Ware and Buntingford
 Managing Director Ian F. Robertson
 Keith Ian Ltd trading as Keith Ian Partnership. Registered in England. No. 4700202