

MORALEE CLOSE

WIMBORNE

BAYVIEW

Welcome Home



ONE SELECT DEVELOPMENT 10 UNIQUE HOMES

Whether it's a first home, downsizing, something new or period character you are after, Moralee Close offers it all within one unique and select development. Sizes range from a 3-bedroom, terraced cottage to a grand 4-bedroom, 3 bathroom period home. All designed with a seamless blend of the classic and the contemporary. We can see something for everyone here. Our vision is to create a very organic-feeling, neighbourly community. Prior to our acquisition of this land, 3 generations of the Moralee family lived here, so when we planned the development it was only natural that we named it after them. Classic and contemporary applies to the way of life as well as the houses at Moralee Close.



WELCOME HOME

Kitchen & Living Room

- Individually designed, shaker style cabinets with traditional cornice, internally finished in light, painted Oak
- Multi White LED spot lighting
- Tall wine rack
- Drawer stack with internal cutlery draw and internal bin
- Central Islands with Quartz stone work tops
- Integrated appliances including AEG Venting Hob
- AEG Single oven/Combi Microwave Tower Unit
- 70/30 frost-free fridge freezer
- Washing machine
- Dishwasher
- Wine cooler
- Feature pendant lighting above breakfast bar/island
- Herringbone style, wood effect tiled flooring
- Separate utility room (houses 32, 3, 8 & 9)

General

- Additional visitors parking spaces
- Pre-wired for EV charging
- Heritage style in frame wood effect windows
- Gas central heating
- Alarm
- New homes include a 10 year new home Build Warranty – provided by Q Assure Build Ltd

Bathrooms & Cloakrooms

- Bespoke bathrooms designed by "The Big Bath Company"
- Full Porcelanosa wall and floor tiles
- Wall hung WC with concealed cistern
- No. 32 Rowlands Hill includes a feature free standing bath
- Baths with over head shower
- Towel radiators
- Downstairs cloakroom

Flooring & Doors

- Ground floor under floor heating (new builds only)
- No. 32 includes restored period radiators to all rooms
- Herringbone Oak Flooring
- Fitted carpets to all non-tiled areas

External

- Landscaped gardens with turfed lawns
- Sandstone patio areas
- Outside tap and electrical socket
- Parking spaces

TUCKED AWAY IN ONE OF DORSET'S MOST POPULAR TOWNS

Rated as one of the best places to live in Dorset, Wimborne is proud of its famous Minster, founded in AD 705, described as being more like a cathedral than a church, it sets the standard for this historic market town which also boasts numerous, elegant and charming Georgian buildings.

There's always masses going on - events and festivals, including live music at The Tivoli Theatre and a big variety of sport at The Wimborne Cricket Club and Canford School. Wimborne is a town that 100% deserves the term vibrant.

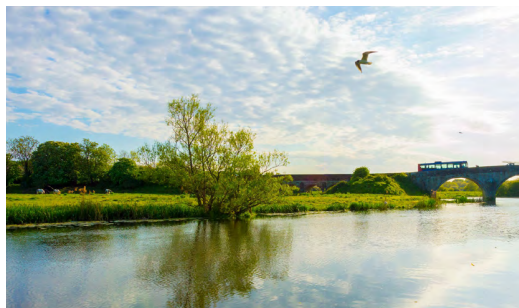
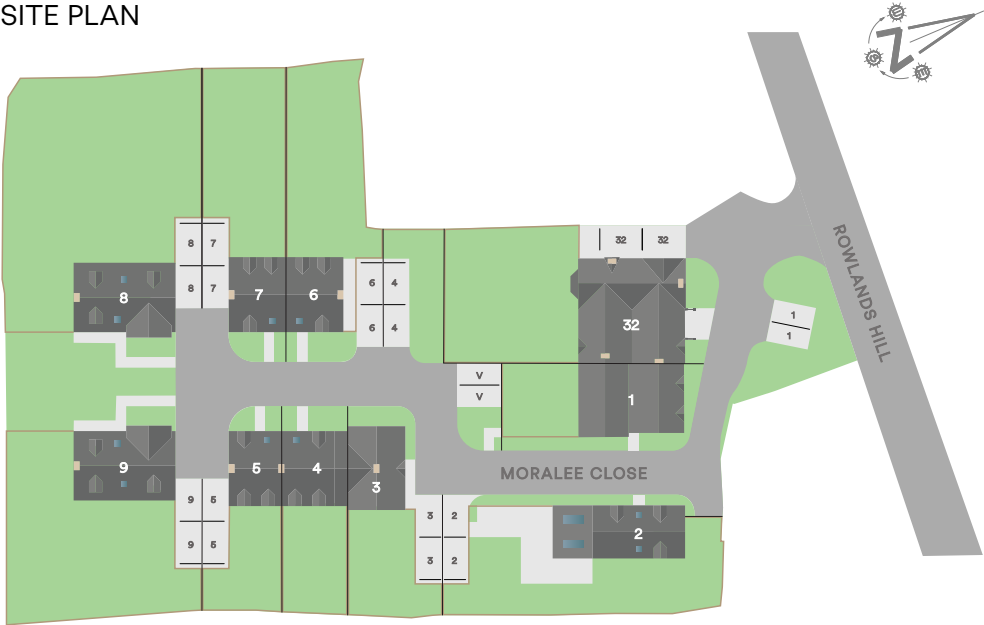


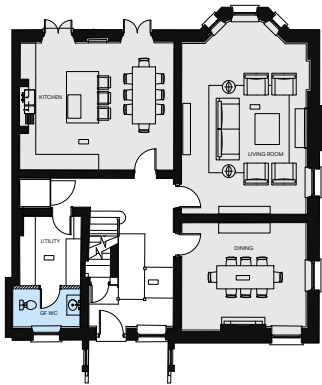
Photo credits: www.placetovisitinengland.com, www.totalguidetodorset.com, National Trust Images, JackPeasePhotography.

Wimborne is situated just on the edge of Cranborne Chase, a designated Area of Outstanding Natural Beauty, covering 380 square miles. Getting out and about into beautiful open country, studded with stately homes is the easiest thing. Outdoorsy types can enjoy walking, cycling, riding and stargazing. For watersports, the many sandy beaches of Bournemouth and Poole are less than 10 miles away. The wilds of the Jurassic coast are 20 and The New Forest just 15 miles away.

With all this within such effortless reach, it's not a surprise to us that the town is so popular.

SITE PLAN





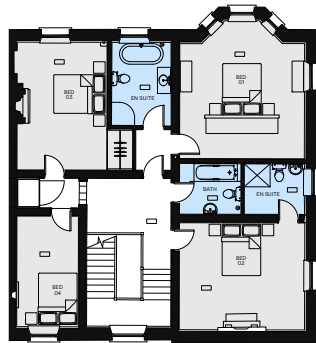
Ground Floor

Kitchen
5.97m X 4.94m

Living Room
6.63m X 4.48m

Dining Room
4.84m X 4.09m

WC
1.68m X 2.60m



First Floor

Master Bedroom
4.89m X 5.70m

En Suite Bathroom
3.31m X 2.35m

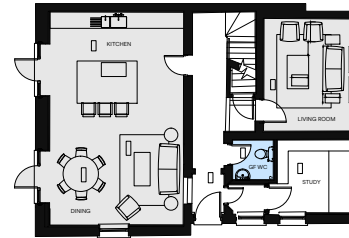
Second Bedroom
4.90m X 4.20m

En Suite Bathroom
2.42m X 2.20m

Third Bedroom
5.10m X 3.63m

Fourth Bedroom
4.36m X 2.36m

Bathroom
2.40m X 2.02m



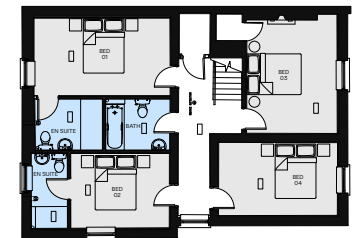
Ground Floor

Kitchen & Dining Room
7.83m X 4.97m

Living Room
4.13m X 3.16m

Study
2.68 X 2.69m

WC
1.6m X 1.45m



First Floor

Master Bedroom
5m X 2.85m

En Suite Bathroom
2.38m X 1.9m

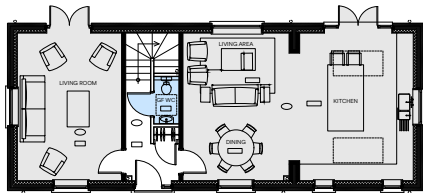
Second Bedroom
3.53m X 2.81m

En Suite Bathroom
2.81m X 1.45m

Third Bedroom
4.43m X 3.43m

Fourth Bedroom
4.46m X 2.77m

Bathroom
2.46m X 1.97m



FLOOR PLAN
PLOT 2

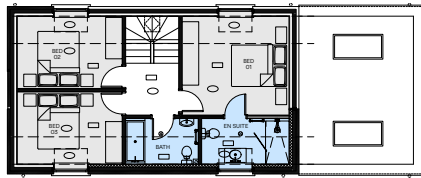
Ground Floor

Kitchen & Dining Room
5.4m X 4.16m

Living Room
5.37m X 3.83m

Second Living Room
5.37m X 3.89m

WC
1.7m X 1.00m



First Floor

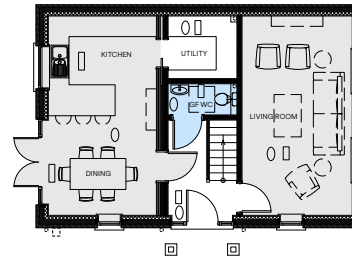
Master Bedroom
3.59m X 3.91m

En Suite Bathroom
3.20m X 1.7m

Second Bedroom
3.84m X 2.61m

Third Bedroom
3.84m X 2.68m

Bathroom
1.6m X 2.6m



FLOOR PLAN
PLOT 3

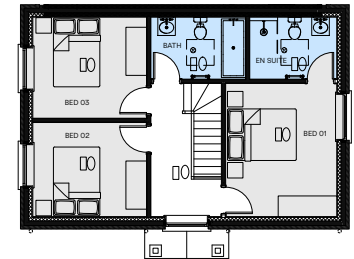
Ground Floor

Kitchen & Dining Room
5.85m X 3.38m

Living Room
5.85m X 3.25m

Utility
2.05m X 1.82m

WC
2m X 0.9m



First Floor

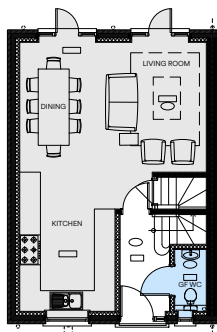
Master Bedroom
3.91m X 3.26m

En Suite Bathroom
2.56m X 1.83m

Second Bedroom
3.34m X 2.77m

Third Bedroom
3.34m X 2.9m

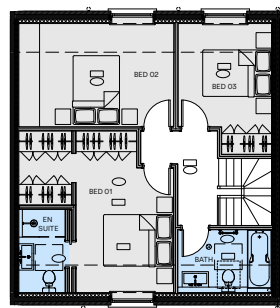
Bathroom
2.76m X 1.86m



Ground Floor

Kitchen, Living & Dining Area
5.47m X 7.87m

WC
1.8m X 0.9m



First Floor

Master Bedroom
3.80m X 4.47m

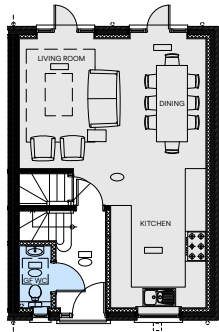
En Suite Bathroom
2.46m X 1.41m

Second Bedroom
4.57m X 3.03m

Third Bedroom
3.83m X 2.76m

Bathroom
2.76m X 1.86m

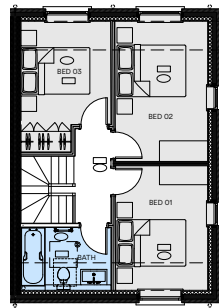




Ground Floor

Kitchen, Living & Dining Area
5.47m X 7.87m

WC
1.8m X 0.9m



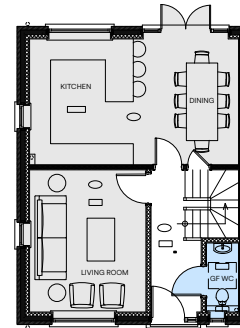
First Floor

Master Bedroom
4.11m X 2.71m

Third Bedroom
3.83m X 2.66m

Second Bedroom
3.65m X 2.71m

Bathroom
2.66m X 1.86m

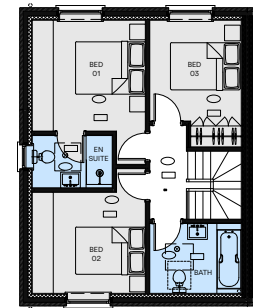


Ground Floor

Kitchen & Dining Room
6.93m X 3.65m

Living Room
4.12m X 3.38m

WC
2.05m X 1.00m



First Floor

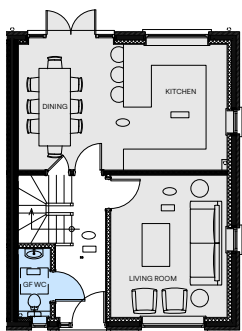
Master Bedroom
3.27m X 3.21m

Third Bedroom
3.66m X 2.66m

En Suite Bathroom
2.29m X 1.49m

Bathroom
2.66m X 2.03m

Second Bedroom
3.27m X 2.93m

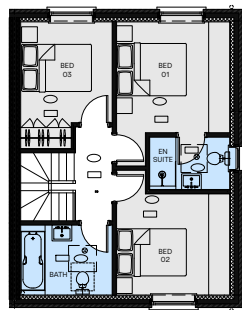


Ground Floor

Kitchen & Dining Room
6.93m X 3.65m

Living Room
4.12m X 3.38m

WC
2.05m X 1.00m



First Floor

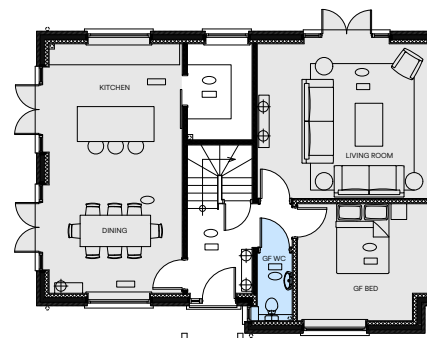
Master Bedroom
3.27m X 3.21m

Third Bedroom
3.66m X 2.66m

En Suite Bathroom
2.29m X 1.49m

Bathroom
2.66m X 2.03m

Second Bedroom
3.27m X 2.93m



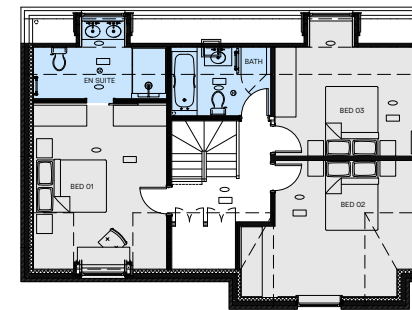
Ground Floor

Kitchen & Dining Room
7.19m X 3.86m

Living Room
4.94m X 4.48m

GF Bedroom
3.79m X 3.40m

WC
2.00m X 1.00m



First Floor

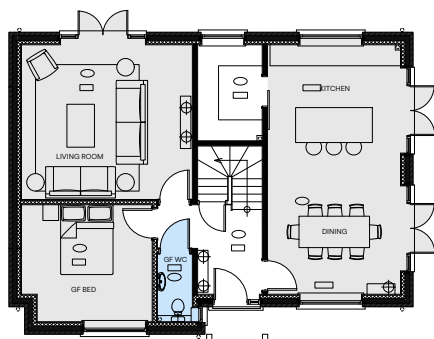
Master Bedroom
4.79m X 3.86m

Third Bedroom
3.97m X 3.14m

En Suite Bathroom
3.86m X 1.50m

Bathroom
2.87m X 2.00m

Second Bedroom
3.93m X 3.97m



FLOOR PLAN
PLOT 9

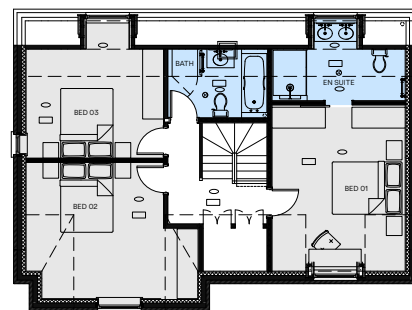
Ground Floor

Kitchen & Dining Room
7.19m X 3.86m

Living Room
4.94m X 4.48m

GF Bedroom
3.79m X 3.40m

WC
2.00m X 1.00m



First Floor

Master Bedroom
4.79m X 3.86m

Third Bedroom
3.97m X 3.14m

En Suite Bathroom
3.86m X 1.50m

Bathroom
2.87m X 2.00m

Second Bedroom
3.93m X 3.97m





WE HAVE A SIMPLE MISSION

TO BUILD HOMES WITH CHARACTER THAT WE WOULD WANT TO LIVE IN OURSELVES

BAYVIEW

Moving is a moment where you embrace your hopes and dreams for a new phase. We believe that people and their dreams matter. For us, what we do is always personal.

We build homes that we would like to live in ourselves... that we would sell to our friends and family. Funnily enough, we often do! We design thoughtfully, focusing on character and quality in the fundamentals and in the details.

When it comes to service, our ethos is the same - you'll always have one of us to talk to from your first view until you are settled in. It's that personal accountability that creates the trust in us. We have built our reputation as carefully as our properties, one brick at a time over three decades.

And, because we are local, you'll probably run into any one of us around town.



MORALEE CLOSE

WIMBORNE

BAYVIEW

Welcome Home

01202 752222

Bayview Developments, The Annexe, Canford Cliff House,
2 Meriden Close, Poole, Dorset, BH13 7JT

bayviewdevelopments.com

The information within this document is indicative and is intended to act as a guide only to the finished product. These particulars should not be relied upon as statements of fact or representation and applicants must satisfy themselves by inspection or otherwise to their correctness. The dimension given on plans are subject to variation and are not intended to be used for carpet sizes, appliance sizes or items of furniture.