

Luxury+Prestige

ALIA

9 PARTRIDGE WALK, LILLIPUT, POOLE, BH14 8HL



























*Indicative design images to show what is possible in this room.



TAKE A STEP INSIDE



Simply click on the thumbnail above to let one of our team give you a guided tour of the highlights.

If you are longing for a more in-depth explore at your own pace, then head across the page to our fully interactive 3D tour.

vimeo

Can't wait to view in person?

All of our properties feature a professionally produced one minute video, personally introduced by a member of our team as well as a fully interactive 3D tour.



Simply click on the thumbnail above to take a step inside and explore this beautiful home.

This fully immersive experience allows you to 'click and drag' your way through the property at your own pace. It is best viewed on a desktop screen or in landscape mode on your smartphone or tablet.

 **Matterport™**

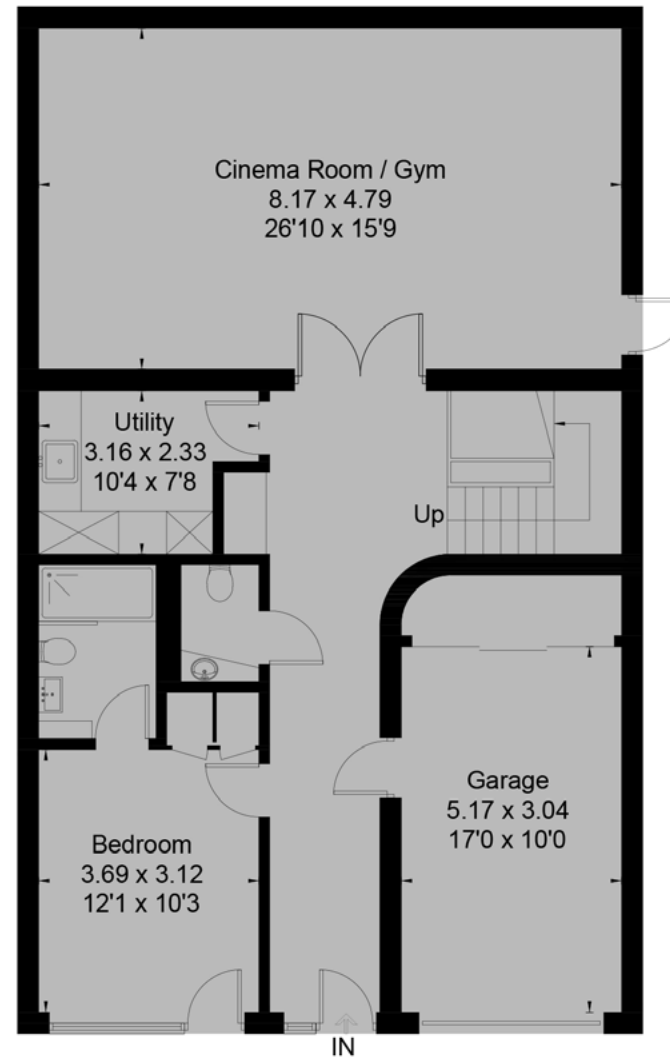
Floorplan

Alia, 9 Partridge Walk
Lilliput, Poole, BH14 8HL

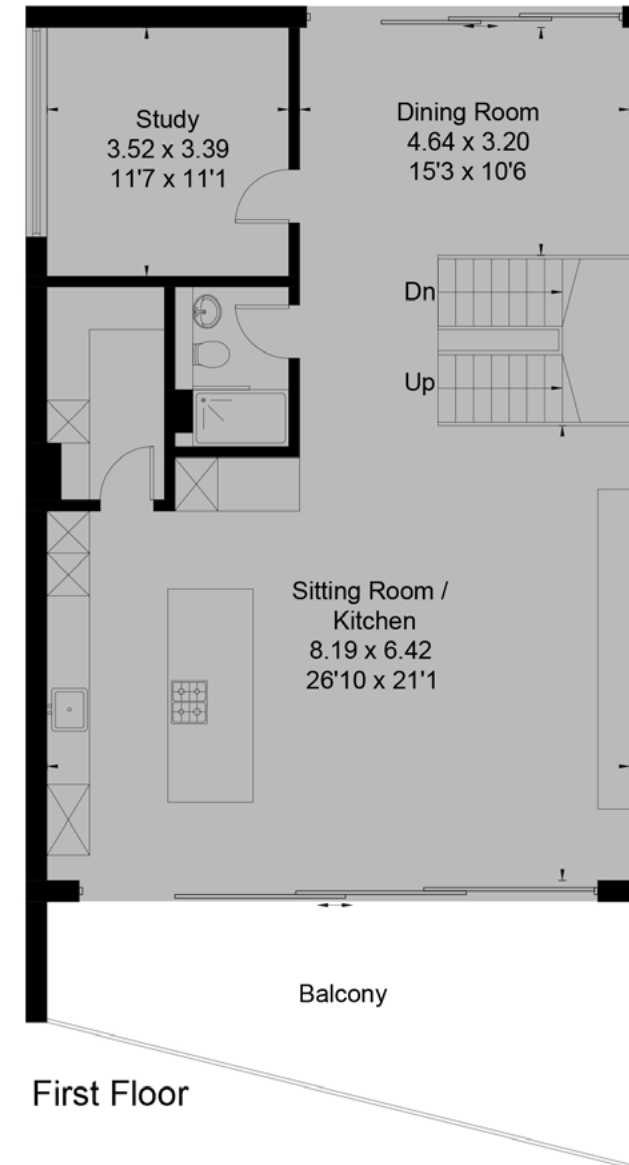
GROSS INTERNAL AREA

House: 3,047 sq. ft / 283 m²

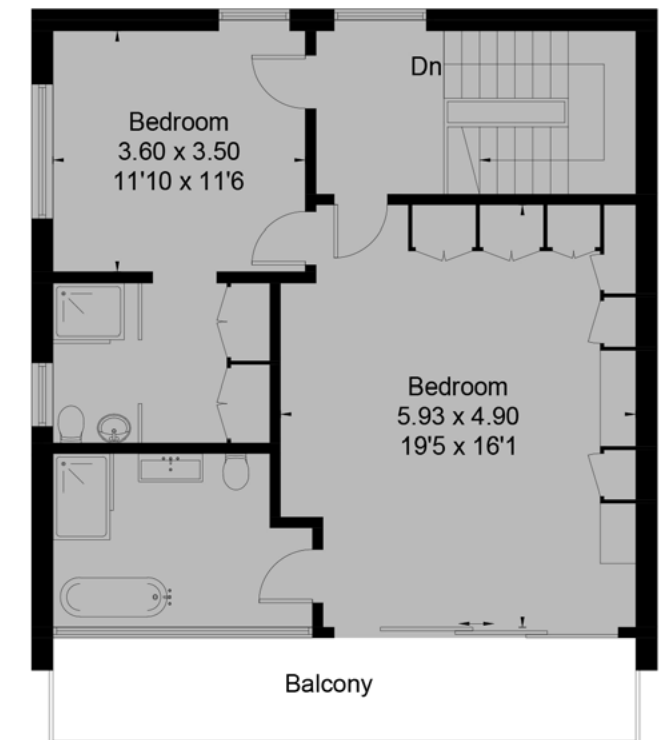
Sizes and dimensions are approximate, actual may vary.



Ground Floor



First Floor



Second Floor



This floor plan has been drawn in accordance with RICS Property Measurement 2nd edition.
All measurements, including the floor area, are approximate and for illustrative purposes only. @fourwalls-group.com #103407

Summary

Nestled in a quiet cul-de-sac in the highly sought-after suburb of Lilliput, Alia is an exceptional new-build home offering cutting-edge contemporary design.

Stand out features include luxurious finishes as well as breathtaking views across the world-famous Poole Harbour. One of just two detached homes on this exclusive development by renowned local builders KLF Developments, Alia exemplifies meticulous attention to detail and intelligent spatial planning. Spanning just over 3000 square feet, this architecturally striking residence is arranged over three floors and features expansive south-facing balconies and a beautifully landscaped rear garden—perfectly designed to make the most of its prime coastal setting.

The lower level is ideal for guest accommodation or entertaining. It includes a spacious bedroom with a designer en-suite shower room, a separate utility room, integral garage, and a versatile entertainment space that could serve as a home spa, games room, or cinema (subject to purchaser requirements and at an additional cost). The heart of the home is a spectacular open-plan living space on the ground floor featuring a bespoke kitchen, complete with premium integrated appliances and a walk-in pantry. Floor-to-ceiling sliding glass doors flood the space with natural light and open out onto a large balcony—ideal for alfresco dining and sunset views. This floor also offers a flexible bedroom/study, a fully tiled shower room, and direct access to the landscaped garden. The luxurious principal suite dominates the top floor, boasting bespoke Novamobili wardrobes, a beautifully appointed en-suite with freestanding bath and walk-in shower, and access to a large private balcony with sweeping harbour views. There is also a further double bedroom with en-suite shower room and dressing area.

Details

Guide Price: £2,250,000

Tenure: Freehold

Lease Length: N/A

Maintenance: N/A

Ground Rent: N/A*

* Ground Rents can increase over time and advice should always be sought from your solicitor before exchange of contracts.

Stamp Duty: Main Home £183,750**
Additional Home £296,250**

** based on guide price

Local Authority: BCP Council

Council Tax: Band TBC
2025/2026 £x,xxx.xx pa***

*** Amount shown is for a main home, please seek advice for additional home.

Services: Mains gas, electricity, water and drainage

Key features

- + **Stunning new build home**
- + **Panoramic harbour views**
- + **Extends to 3,355 square feet**
- + **Striking architectural design**
- + **Four bedrooms, five bathrooms**
- + **South facing balconies and landscaped rear garden**
- + **Integral garage and off road parking**
- + **Quiet cul-de-sac location**
- + **Ready for occupation**
- + **Detailed specification upon request**

Our team



Steve Isaacs
Director

07970 878106
steve@luxuryandprestige.com



David Chissell
Director

07795 835647
david@luxuryandprestige.com



Harriet Towing
Head of Sales

07809 908718
harriet@luxuryandprestige.com



Adrianna Ciereszko
Photographer

01202 007373
adrianna@luxuryandprestige.com



Ryan Horan
Land & New Homes

07512 196688
ryan@luxuryandprestige.com



Thomas Powner
Residential Sales

07437 491094
tom@luxuryandprestige.com



Valentina Morana
Residential Sales

07366 799790
valentina@luxuryandprestige.com



Joanne Bound
Search Agent

01202 007373
jbound@luxuryandprestige.com

Get in touch

In person:	28A Haven Road Canford Cliffs Poole BH13 7LP
By phone:	01202 007373
By email:	info@luxuryandprestige.com
Online:	luxuryandprestige.com
Facebook:	facebook.com/luxuryandprestige
Instagram:	@luxuryprestigerealty
Property ref:	1069
Published:	February 2026



Important notice

Luxury and Prestige Realty Ltd, its clients and any joint agents give notice that 1: They are not authorised to make or give any representations or warranties in relation to the property either here or elsewhere, either on their own behalf or on behalf of their client otherwise. They assume no responsibility for any statement that may be made in these particulars. These particulars do not form part of any offer or contract and must not be relied upon as statements or representations of fact. 2: Any areas, measurements or distances are approximate. The text, photographs and plans are for guidance only and are not necessarily comprehensive. It should not be assumed that the property has all necessary planning, building regulation or other consents and Luxury and Prestige have not tested any services, equipment or facilities. Purchasers must satisfy themselves by inspection or otherwise.

Luxury+Prestige