

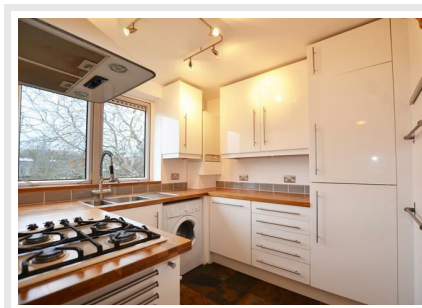
43 High Street, Teddington, TW11 8HB

020 8977 1166

milestoneteddington.london



Crieff Court, Teddington, TW11 9DS



£279,950 Leasehold

This bright and airy top floor purpose built apartment is in excellent condition with fantastic proportions and is conveniently located a short distance to local amenities and transport links of Hampton Wick, Teddington and Kingston.

Crieff Court, Teddington, TW11 9DS

This well presented one double bedroom top (second) floor apartment is conveniently located a short distance to local amenities and transport links of Hampton Wick, Teddington and Kingston. The flat is approached from a communal hall with security intercom and staircase leading to the second floor landing.

The bright and airy reception room has large double glazed windows allowing light to flood through and a double glazed patio door leading to a private balcony which has enough space for a table and chairs.

The separate kitchen has a range units with wooden worktops, elegant grey tiles and slate flooring, there is a four ring gas hob, electric oven, fitted overhead extractor and integrated appliances including washing machine/fridge freezer and dishwasher.

There is a generous sized double bedroom with full width fitted wardrobes and a smart bathroom with shower over the bath.

Further benefits include one locked storage rooms in the hallway which can accommodate multiple adult bikes/ pushchairs/ household items, designated drying area on each floor, communal grounds, ample residents parking and a private storage cupboard on the ground floor ideal for additional storage needs.

The current owners have recently extended the lease to 2200 (currently 180 years), the property has been newly decorated throughout and along with low maintenance costs making this property ideal for a first time buyer or as an investment.

180 Years remaining on the lease

Service charge approx £780pa

Ground rent £10pa

