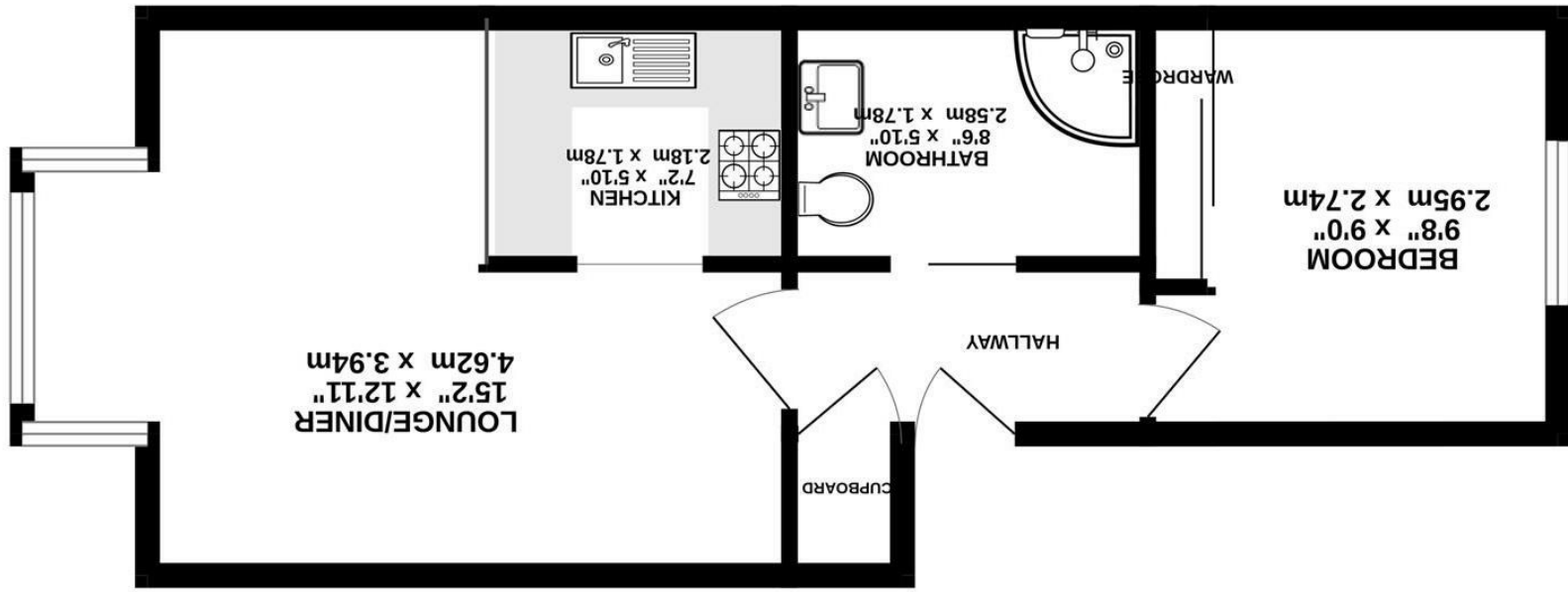


Whilst every attempt has been made to ensure the accuracy of the floorplan contained here, measurements of doors, windows, rooms and any other items are approximate and no responsibility is taken for any error, omission or mis-statement. This plan is for illustrative purposes only and should be used as such by any prospective purchaser. The services, systems and appliances shown have not been tested and no guarantee as to their operability or efficiency can be given.
 Made with Metropix ©2023



GROUND FLOOR
 406 sq.ft. (37.7 sq.m.) approx.





Flat 4 24 Foxglove Way

Wallington, SM6 7JR

£1,250 Per Calendar Month

Available July 2024 - Unfurnished. Silverman Black is delighted to offer this spacious, recently redecorated one bedroom apartment in a modern block on the Flower Estate only about five minutes walk from Hackbridge shops and BR station. The accommodation comprises a bright and airy L-shaped living room with a deep bay window overlooking the communal gardens and ample space for both lounge & dining room furniture, a self-contained kitchen with ample storage and new appliances (fridge freezer, cooker and washing machine), a good size shower room and a double bedroom with a large mirrored wardrobe. The apartment has electric heating, a security entryphone system, double glazing, a deep (walk-in) storage cupboard, use of the communal gardens and an allocated parking space. In terms of local facilities, Hackbridge village centre and the Aldi supermarket is about 300 yards away, whilst Hackbridge BR station is only 0.25 miles distant - affording easy access to Clapham Junction and London Victoria. Tram services to both Wimbledon and Beckenham are available at Mitcham Junction, which is about 1 mile distant, whilst the 127 & 151 bus services run through the Village. Call today to book a suitable time to view.

- Available July 2024 - Unfurnished
- A spacious, recently redecorated one bedroom first floor apartment in the Flower Estate in Hackbridge, only five minutes walk from Hackbridge BR station
- Large L-shaped living room with ample space for lounge and dining room furniture, enclosed kitchen with new appliances, shower room, double bedroom with large mirrored wardrobe
- Electric heating, double glazing, security entryphone system, large walk-in storage cupboard, communal gardens and allocated parking space
- Hackbridge village 300 yards distant, 0.25 miles to Hackbridge BR station giving access to Clapham Junction & London Victoria, tram services to Wimbledon & Beckenham available at Mitcham Junction (1 mile away), easy access to the 127 & 151 buses
- Call today to book your viewing appointment
- EPC Rating B

