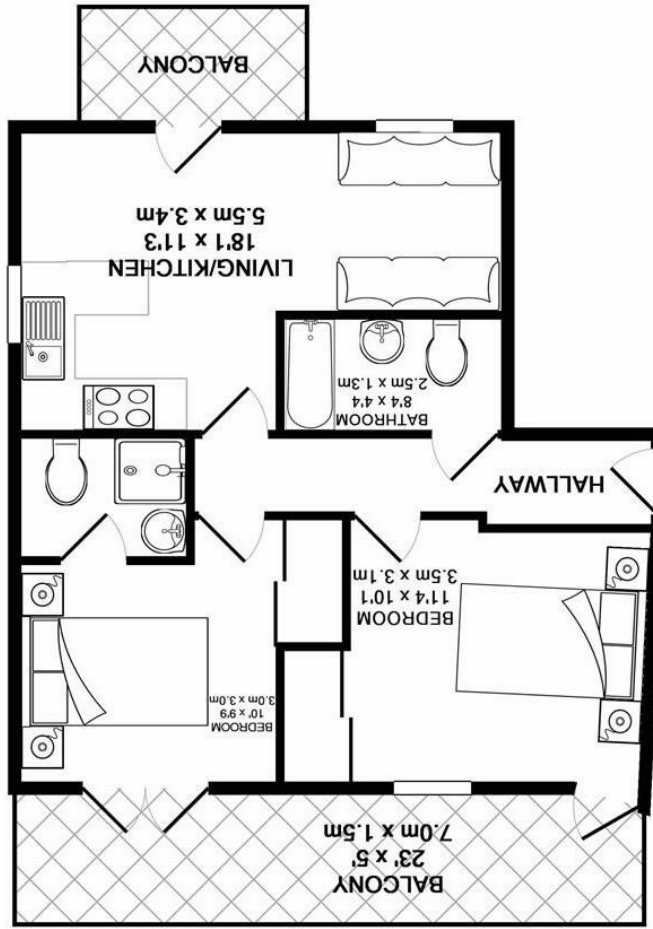


Whist every attempt has been made to ensure the accuracy of the floor plan contained here, measurements of doors, windows, rooms and any other items are approximate and no responsibility is taken for any error, omission, or mis-statement. This plan is for illustrative purposes only and should be used as such by any prospective purchaser. The services, systems and appliances shown have not been tested and no guarantee as to their operability or efficiency can be given
 Made with Metropix ©2015



SILVERMAN
BLACK
 PROPERTY SPECIALISTS





Flat 2 Nicole Lodge Carshalton Park Road

CARSHALTON, SM5 3SR

£1,350 Per Calendar Month

Available mid October 2020 - Unfurnished. A spacious and well appointed two bedroom first floor luxury apartment in one of Carshalton's most prestigious and sought after residential developments. Built only about 8 years ago and ideally located within easy reach of both the Village Centre & Carshalton BR station, the development boasts gated underground parking, a good size communal patio garden, lift services to all floors and triple glazing as standard. The apartment affords a good size Living Room with double doors to a private balcony, a luxury fitted and fully equipped Kitchen, two double bedrooms, each with access to a private south facing balcony and two bathrooms (one en suite shower room and a sizable family bathroom). Viewing is highly recommended to appreciate this quality apartment - so book your appointment today.

- A luxury two bedroom/two bathroom apartment in one of Carshalton's most sought after developments
- Available from 16 October 2020 - Unfurnished
- Large Lounge with access to a private balcony, two double bedrooms each with access to a south facing balcony, fully equipped kitchen, ensuite shower room & family bathroom
- Full central heating, triple glazing as standard, undercroft gated parking area for one car, lift service to all floors, large communal patio garden/BBQ area
- Approx 5 minutes walk to both Carshalton BR station and Carshalton Village , adjacent to the Ponds and Ecology Centre
- EPC rating: C (78/79)
- Viewing highly recommended

