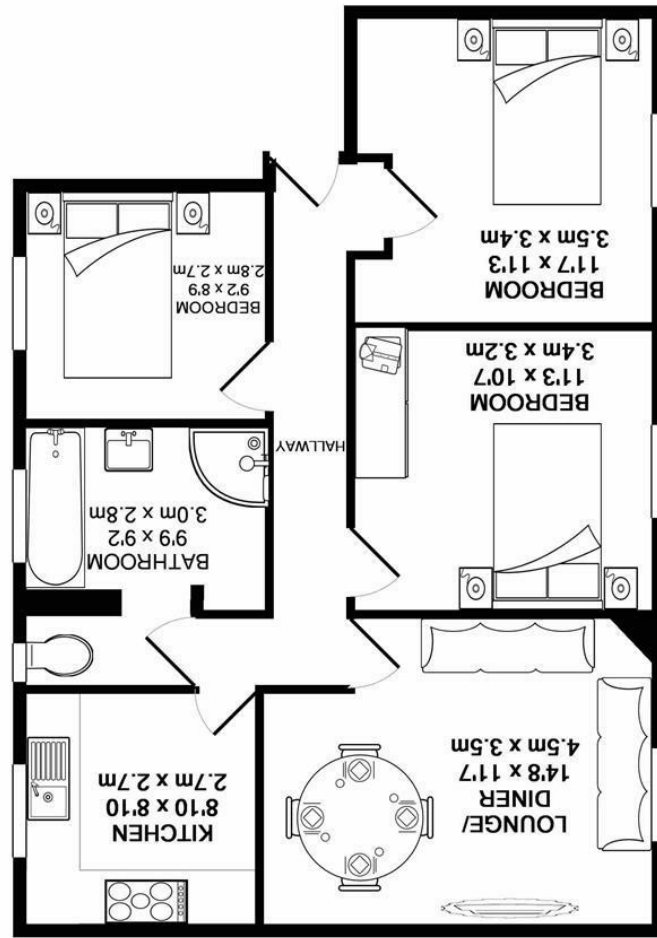


Whilst every attempt has been made to ensure the accuracy of the floor plan contained here, measurements of doors, windows, rooms and any other items are approximate and no responsibility is taken for any error, omission, or mis-statement. This plan is for illustrative purposes only and should be used as such by any prospective purchaser. The services, systems and appliances shown have not been tested and no guarantee as to their operability or efficiency can be given.
 Made with Metropix ©2019



TOTAL APPROX. FLOOR AREA 714 SQ.FT. (66.3 SQ.M.)

SILVERMAN
BLACK
 PROPERTY SPECIALISTS



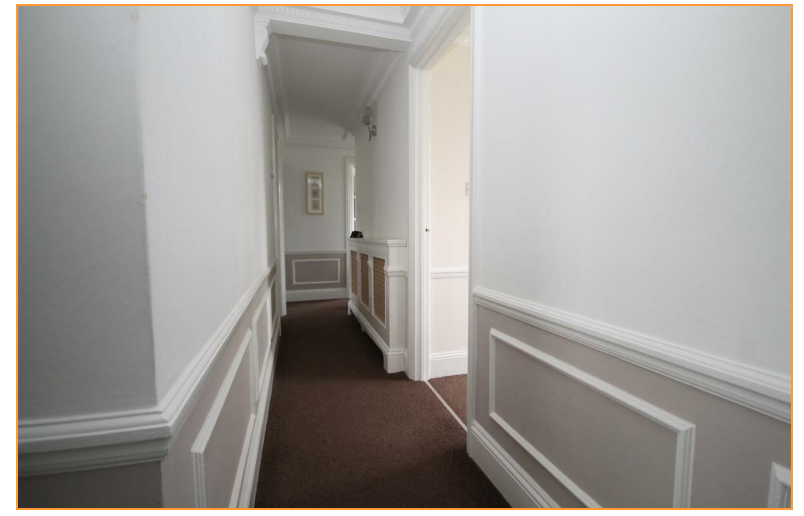


22 Devana End

Carshalton, SM5 2NL

£1,750 Per Calendar Month

Available Immediately - Unfurnished. Silverman Black is delighted to offer this spacious and well-appointed three bedroom first floor apartment in the popular Devana End development. The property is ideally located about 10 minutes walk of both Carshalton and Hackbridge BR stations and adjacent to main bus routes with access to Tooting, Purley and Worcester Park - so is perfect for commuters and local families alike! The accommodation incorporates a good size lounge, three double bedrooms, a well-equipped kitchen and a reconfigured bathroom with a large spa/whirl bath and a separate shower facility. Externally, there are well maintained communal gardens and parking (resident's permits) available, whilst the flat also offers the use of a large secure store locker and garage. Viewing is strongly recommended - so book your appointment today!



- Three double bedroom, first floor apartment located in a popular & conveniently located development
- Ideal location for access to Carshalton and Hackbridge BR stations, plus several good bus routes
- Spacious accommodation comprising a good size living room, well-equipped kitchen, three double bedrooms and a reconfigured bathroom with whirl/spa bath and separate shower unit
- Private resident's parking and surrounding well-maintained gardens
- Additional lockable storage locker
- EPC rating: C (71/80)
- Viewing highly recommended

