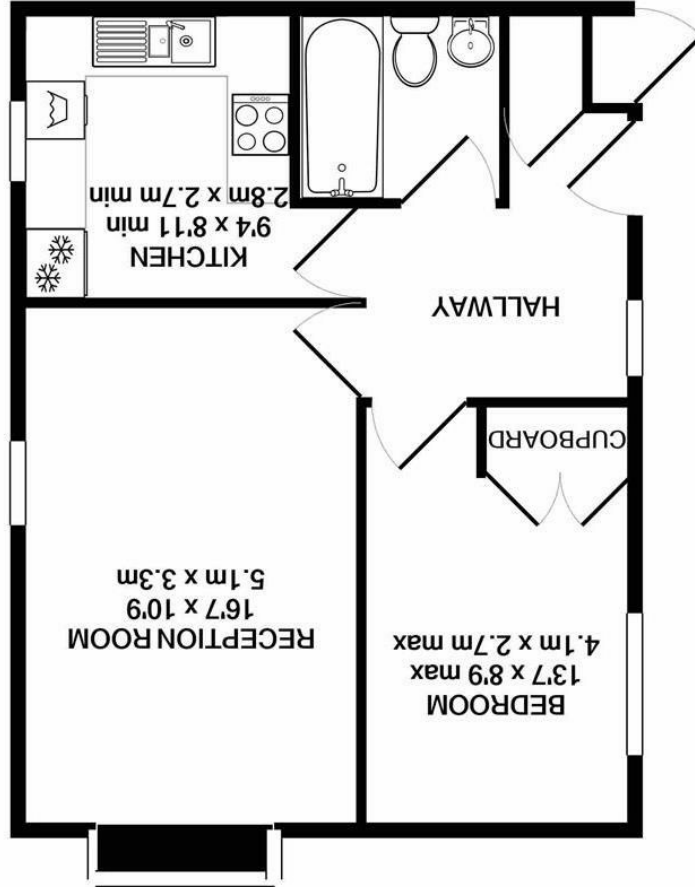


Whilst every attempt has been made to ensure the accuracy of the floor plan contained here, measurements of doors, windows, rooms and any other items are approximate and no responsibility is taken for any error, omission, or mis-statement. This plan is for illustrative purposes only and should be used as such by any prospective purchaser. The services, systems and appliances shown have not been tested and no guarantee as to their operability or efficiency can be given
 Made with Metropix ©2021

TOTAL APPROX. FLOOR AREA 507 SQ.FT. (47.1 SQ.M.)



SILVERMAN
BLACK
 PROPERTY SPECIALISTS





14 Bradley Court 104 Denning Avenue

Croydon, CR0 4DF

£1,000 Per Calendar Month

Available January 2024 - Unfurnished. Silverman Black is delighted to market this one bed first floor apartment located in a popular block on the outskirts of Croydon. A well maintained private development, the property features a large reception room with a deep bow window, a brand new kitchen suite with oven, hob, washer/dryer and fridge freezer, a sizable double bedroom with built in wardrobes, a refitted bathroom with a white suite and new flooring/carpeting throughout. The property is within walking distance to Waddon Station (400 m - around 5 minutes) and also has parking within a resident's compound to the rear of the building, and communal gardens surrounding. Croydon Town Centre is approximately 0.75 miles away, there are bus connections to Streatham, Sutton and Gatwick immediately on hand, and East Croydon BR station is approximately 1 mile distant. Viewing highly recommended. Sorry - No Pets & No Smokers.

- Silverman Black Estate Agents are delighted to offer to the rental market this one bed first floor apartment in a convenient central location
- Accommodation comprises a large lounge, a recently refitted kitchen with all major appliances, a sizable double bedroom and a new bathroom suite.
- New carpets/flooring, double glazed windows, new electric panel radiators
- Residents Parking compound & surrounding gardens
- Sorry - no pets or smokers
- Close to Waddon BR station (400 m) and Croydon Town Centre (c. 0.75 miles)
- EPC rating: C (73/82)
- Viewing highly recommended

