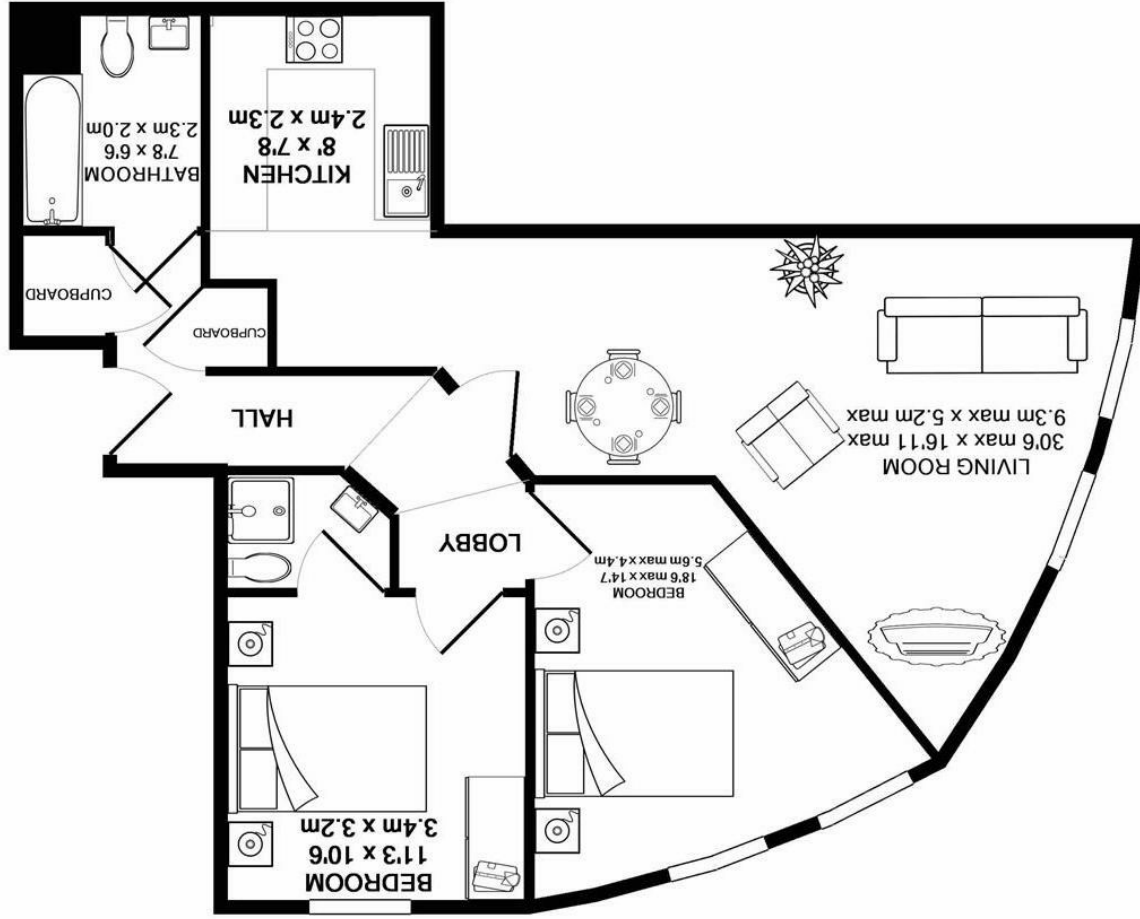


Whilst every attempt has been made to ensure the accuracy of the floor plan contained here, measurements of doors, windows, rooms and any other items are approximate and no responsibility is taken for any error, omission, or mis-statement. This plan is for illustrative purposes only and should be used as such by any prospective purchaser. The services, systems and appliances shown have not been tested and no guarantee as to their operability or efficiency can be given.  
 Made with Metropix ©2014



**SILVERMAN**  
**BLACK**  
 PROPERTY SPECIALISTS





## 26 Saxon House

WALLINGTON, SM6 7AN

**£1,650 Per Calendar Month**

Available Immediately - Part Furnished. Silverman Black is delighted to offer this spacious and luxuriously appointed two bedroom, two bathroom apartment located only a couple of hundred yards from Hackbridge BR station. Built in 2012, this prestigious block affords undercroft parking facilities, lift services and a communal roof garden, whilst the property itself offers two double bedrooms, one with an ensuite shower room, a further family bathroom and a substantial open plan living room with a separate fully integrated luxury kitchen. Located at the front of the building with curved walls and floor-to-ceiling glazing, this really is the perfect apartment for professionals seeking a high quality flat and easy access to Central London. View by appointment with Silverman Black.



- Available Immediately - Part Furnished
- Silverman Black is delighted to offer this spacious and luxuriously appointed two bedroom, two bathroom apartment
- Built in 2012, this prestigious block affords undercroft parking facilities
- The apartment block benefits from a lift service
- Two Bedrooms one with an En-Suite
- There is a substantial open plan living room with a separate fully integrated luxury kitchen
- Within 2 mins walking distance of Hackbridge BR Station
- View by appointment with Silverman Black.
- Underground Car Parking
- First Floor communal Garden

