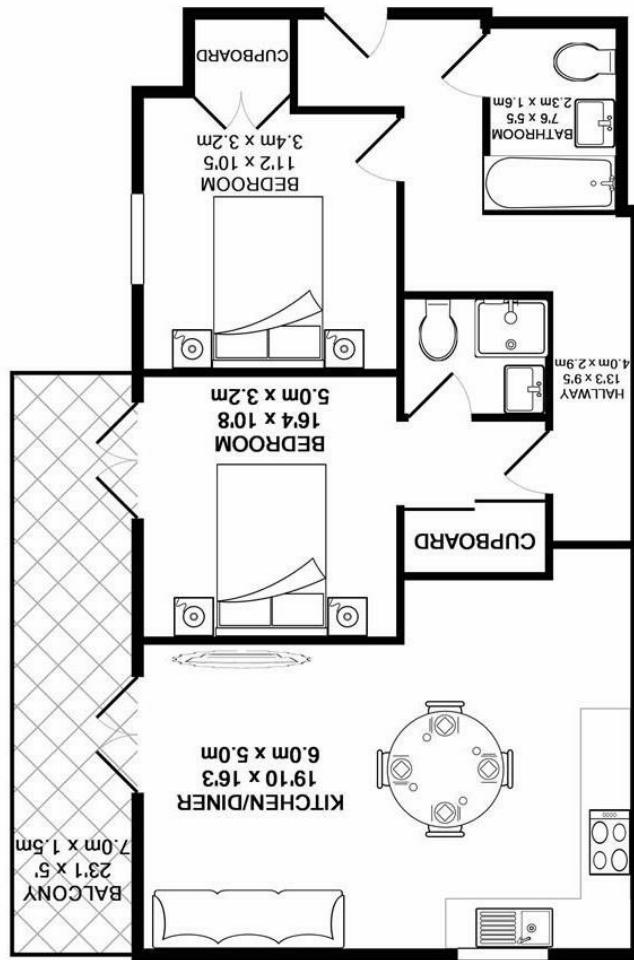
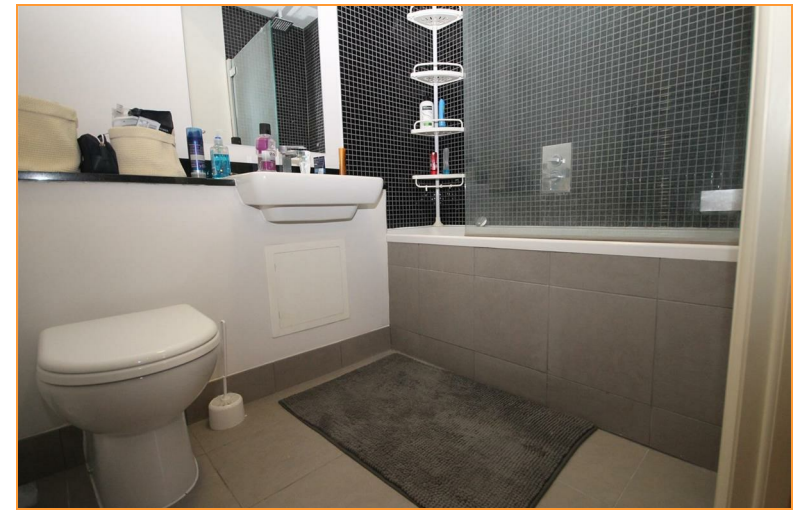


TOTAL APPROX. FLOOR AREA 728 SQ.FT. (67.6 SQ.M.)
 Whilst every attempt has been made to ensure the accuracy of the floor plan contained here, measurements of doors, windows, rooms and any other items are approximate and no responsibility is taken for any error, omission, or mis-statement. This plan is for illustrative purposes only and should be used as such by any prospective purchaser. The services, systems and appliances shown have not been tested and no guarantee as to their operability or efficiency can be given.
 Made with Metropix ©2019



SILVERMAN
BLACK
 PROPERTY SPECIALISTS





Flat 11 Nicole Lodge

CARSHALTON, SM5 3SR

£1,450 Per Calendar Month

Available End of January 2023. Furnished. A spacious and well appointed, two bedroom first floor luxury apartment in one of Carshalton's most prestigious and sought after residential developments. Built only a few years ago and ideally located within easy reach of both the Village Centre & Carshalton BR station, the development boasts gated underground parking, a good size communal patio garden, lift services to all floors and triple glazing as standard. The apartment affords a good size luxury fitted and fully equipped Kitchen/Living Room with double doors to a private balcony, two double bedrooms, master bedroom with access to the balcony and two bathrooms (one en suite shower room and a sizable family bathroom). Viewing is highly recommended to appreciate this quality apartment - so book your appointment today.

- Two double bedrooms, master with en-suite and walk in wardrobe
- Fully equipped kitchen
- Access to both Carshalton and Carshalton Beeches BR Stations and local bus links
- Close proximity to the Village Centre and local amenities
- Gas Central Heating and Triple Glazing
- West facing balcony
- Private and gated underground parking
- Lift services en block
- Available end of January 2023

