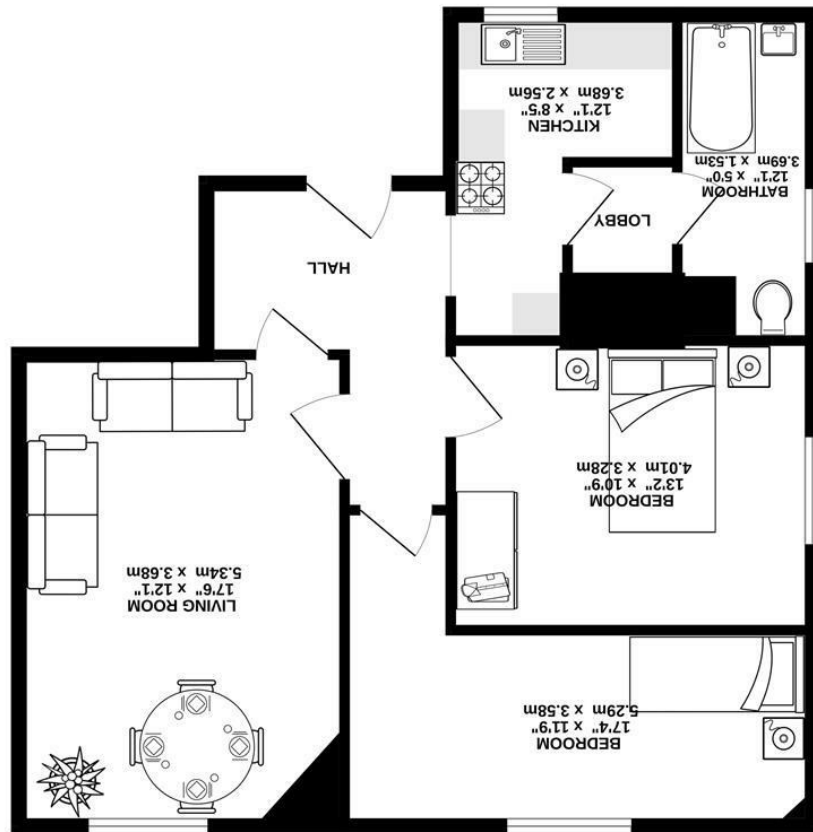


While every attempt has been made to ensure the accuracy of the floorplan contained here, measurements of doors, windows, rooms and any other details are approximate and no responsibility is taken for any error, omission or mis-statement. This plan is for illustrative purposes only and should be used as such by any prospective purchaser. The services, systems and appliances shown here are not intended and no guarantee as to their operation or efficiency can be given.



2ND FLOOR
 724 sq.ft. (67.3 sq.m.) approx.

SILVERMAN
BLACK
 PROPERTY SPECIALISTS





7B High Street

CARSHALTON, SM5 3AP

£1,450 Per Calendar Month

Silverman Black are delighted to offer to the rental market this spacious quirky and unique two bedroom apartment located in a period building in the very heart of Carshalton Village. Affording a good size Living Room, two good size bedrooms, a well equipped Kitchen and Bathroom, the property is only yards from All Saints Church, Grove Park and The Ponds, and less than five minutes walk to Carshalton BR station and the shops in the Village centre. The property is within the catchment areas for Wallington County Grammar School, Wilsons School, Sutton Grammar and Wallington High School for Girls Available Immediately, unfurnished. The property has recently been decorated. EPC rating C.

An early viewing is highly recommended

- Available Immediately
- Silverman Black are delighted to offer to market this spacious, quirky, spacious Two Bedroom Apartment
- Spacious lounge and living area. The property has recently been redecorated.
- Close to Carshalton Village and Carshalton BR Station.

