



Radcliffe & Rust
Residential sales & lettings

35 Christchurch Street, Cambridge CB1 1HT
£900 PCM

Radcliffe & Rust are please to present for let this one bedroom open plan apartment situated in the centre of Cambridge above the Grafton Centre, offering a living room with a balcony, double bedroom with built in wardrobes, bathroom, kitchen/dining room with cooker and fridge freezer supplied. Outside there is a secure brick built shed ideal for a bike store. Available from W/C 23rd November 2020



Second Floor

Open plan living area

Living area

17'07" x 9'06" (5.36 x 2.90)

With entrance door to front aspect, television point, two wall lights, radiator laminate flooring, door to balcony and window to rear aspect, open plan to:

Kitchen/dining area

16'02" x 7'09" (4.93 x 2.36)

With two windows to front aspect, fitted with a matching range of wall and base units with worktop space over, inset sink and drainer unit, electric oven and hob unit with extractor unit over, washing machine, fridge/freezer, telephone point.

Bedroom

12'05" x 9'00" (3.78 x 2.74)

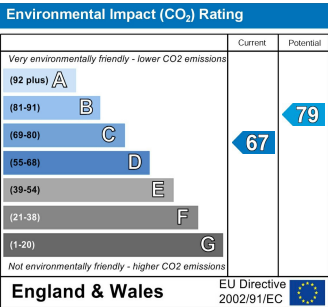
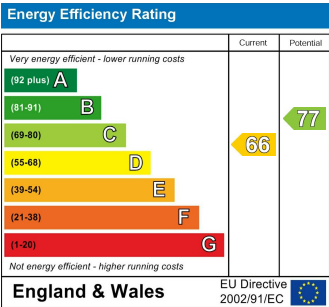
With window to side aspect, radiator, laminate flooring, built in wardrobe.

Bathroom

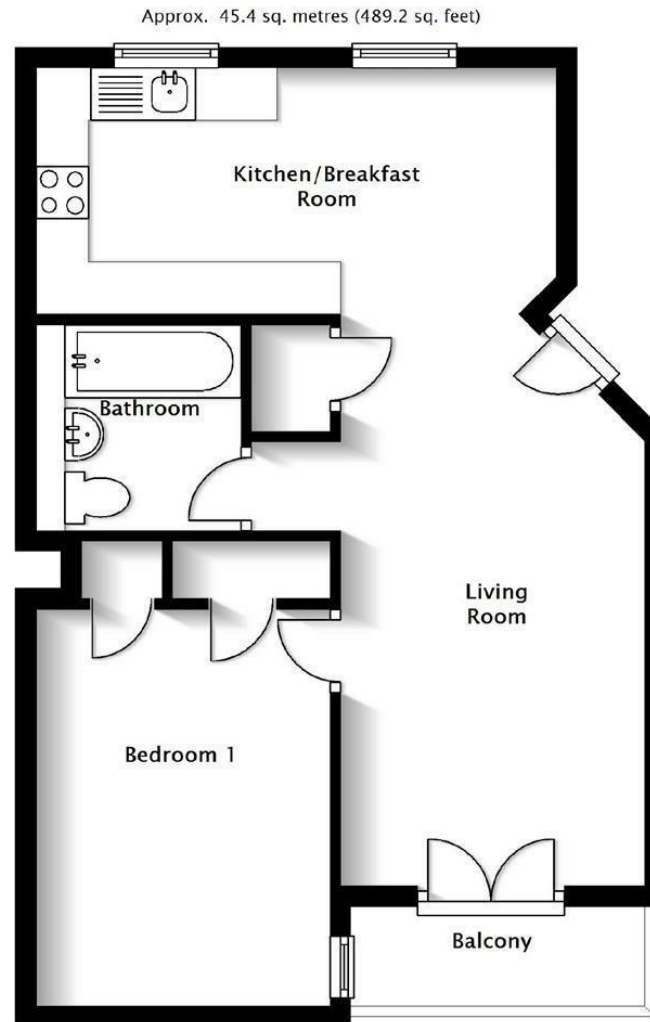
Fitted with a matching three piece suite comprising, bath with shower over, wash hand basin, low level W.C, extractor fan, vinyl flooring.

Outside

There is an open communal entrance hall with a stair well leading to all floors. There is also secure brick built storage perfect for storing of bikes.







NOT TO SCALE – For Guidance Purposes only
Plan produced using PlanUp.