



www.kings-group.net

488 Bethnal Green Road
London E2 0EA
Tel: 0207 613 2121

Wickford Street, London, E1 4HW

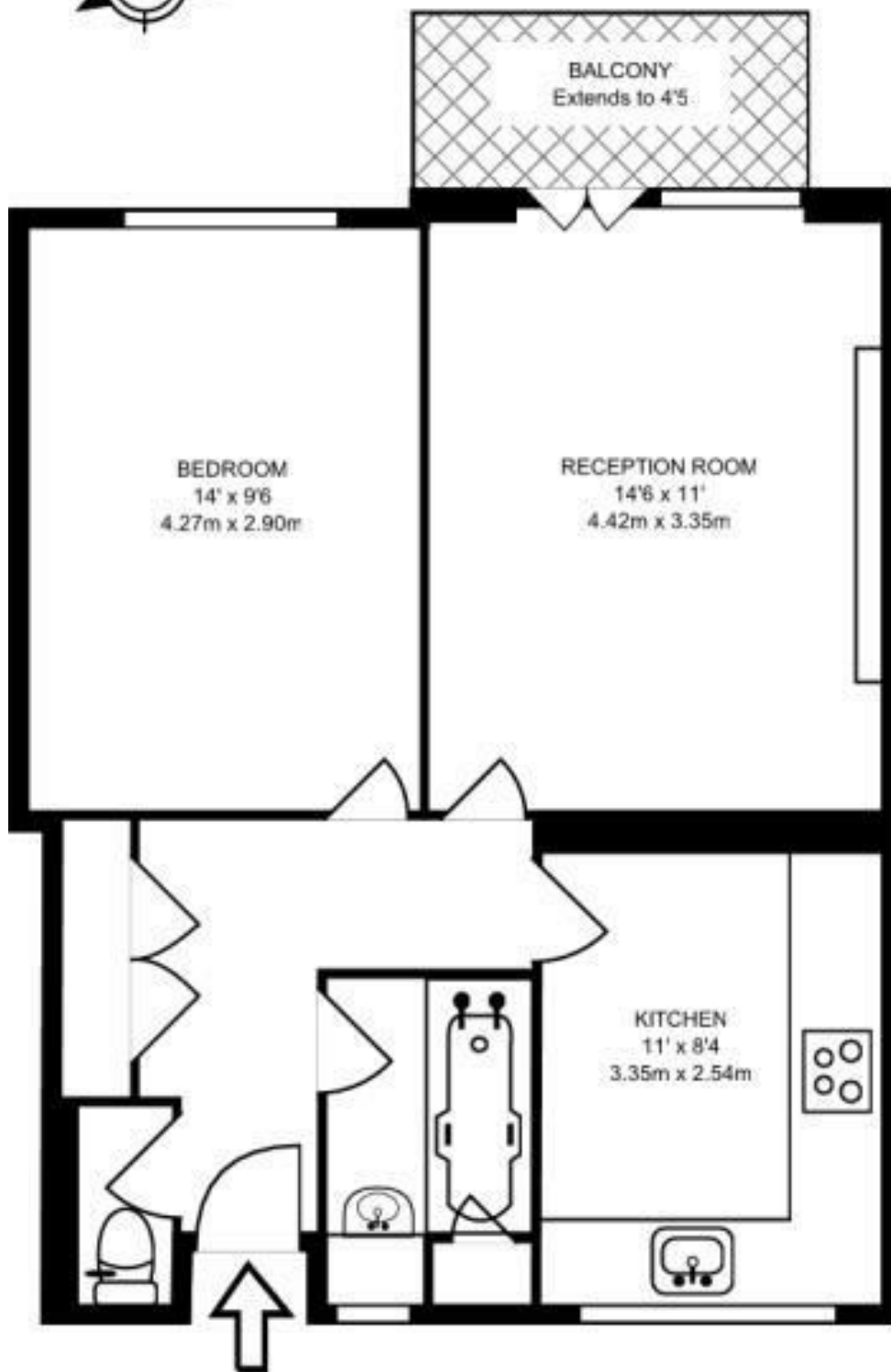


£1,400 Per Month

***** NEWLY REFURBISHED 2 BED FLAT***** This fantastic property comprises of a, separate kitchen, 2 LARGE DOUBLE BEDROOMS (NO RECEPTION). SEPARATE WC FULLY FURNISHED. IMMACULATE CONDITION. Conveniently situated within a FIVE MINUTE WALK to Bethnal Green STATION (Central line and overground) 10 MINUTE walk to trendy

BOOK A VIEWING NOW TO AVOID DISAPPOINTMENT!





Energy Efficiency Rating		
	Current	Potential
Very energy efficient - lower running costs		
(92 plus) A		
(81-91) B		
(69-80) C		
(55-68) D		
(39-54) E		
(21-38) F		
(1-20) G		
Not energy efficient - higher running costs		
England & Wales	EU Directive 2002/91/EC	

Environmental Impact (CO ₂) Rating		
	Current	Potential
Very environmentally friendly - lower CO ₂ emissions		
(92 plus) A		
(81-91) B		
(69-80) C		
(55-68) D		
(39-54) E		
(21-38) F		
(1-20) G		
Not environmentally friendly - higher CO ₂ emissions		
England & Wales	EU Directive 2002/91/EC	



Associated Offices in London, Essex and Hertfordshire
Kings Head Office Tudor Lodge, Burton Lane, Goffs Oak, Hertfordshire EN7 6SY Tel: 01707-872000

