

High Street, London, E15 2NY



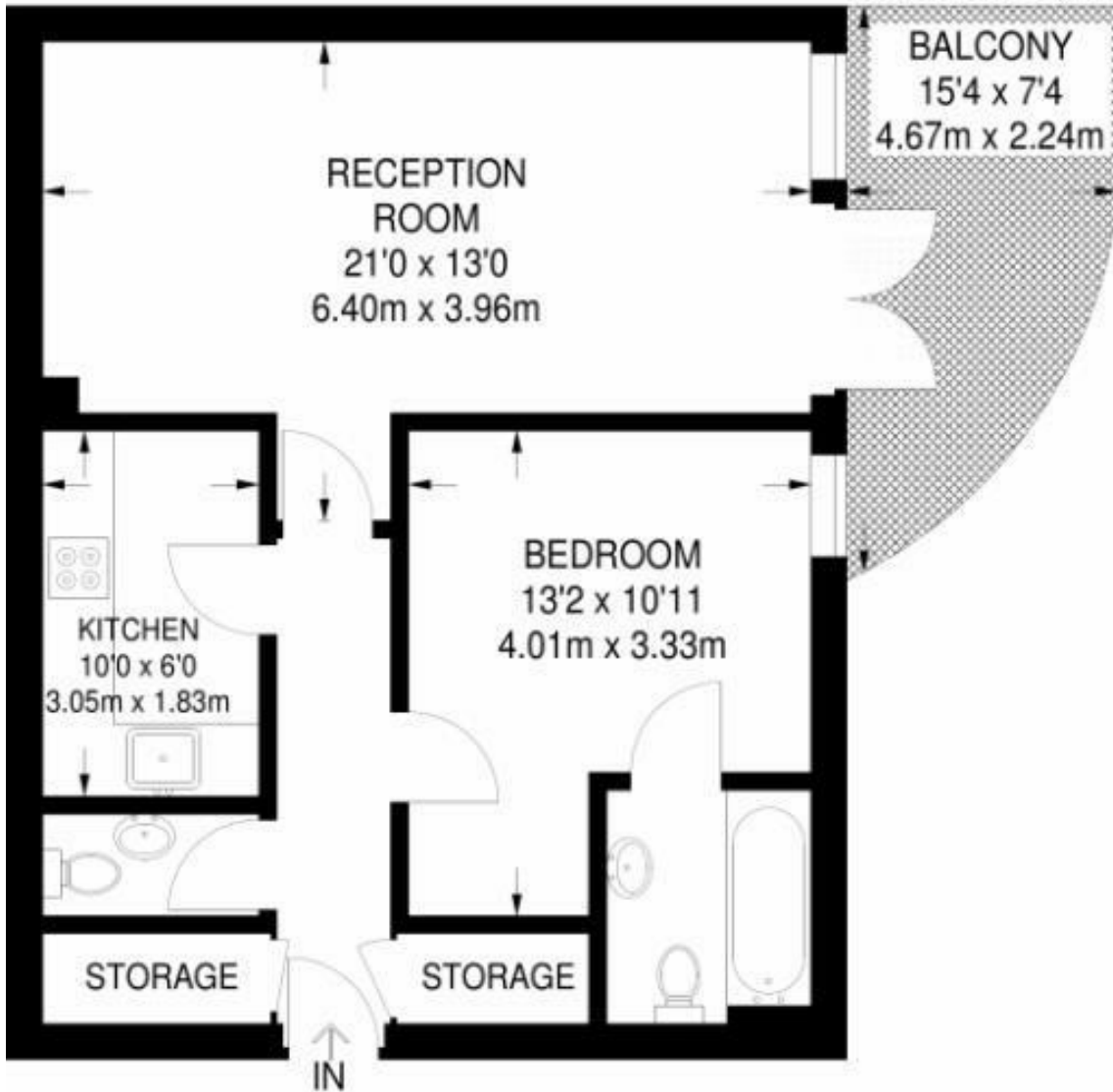
£1,450 Per Month

AVALABILE FROM 27TH MARCH **STUNNING ONE BEDROOM FLAT IN STRATFORD** This property boasts a **HUGE MASTER BEDROOM**, modern three piece bathroom, a contemporary kitchen and large living room leading to a **PRIVATE BALCONY**.

Situated in a secured **MODERN BUILDING** with **GYM & CONCIERGE** , offers easy access to Stratford and the City and many local amenities.

CALL NOW TO AVOID DISAPPOINTMENT!!!





SIXTH FLOOR
570 SQ FT / 53.0 SQ M

Energy Efficiency Rating		Current	Potential
Very energy efficient - lower running costs			
(92 plus) A			
(81-91) B			
(69-80) C			
(55-68) D			
(39-54) E			
(21-38) F			
(1-20) G			
Not energy efficient - higher running costs			
England & Wales	EU Directive 2002/91/EC	75	83

Environmental Impact (CO ₂) Rating		Current	Potential
Very environmentally friendly - lower CO ₂ emissions			
(92 plus) A			
(81-91) B			
(69-80) C			
(55-68) D			
(39-54) E			
(21-38) F			
(1-20) G			
Not environmentally friendly - higher CO ₂ emissions			
England & Wales	EU Directive 2002/91/EC		



Associated Offices in London, Essex and Hertfordshire
Kings Head Office Tudor Lodge, Burton Lane, Goffs Oak, Hertfordshire EN7 6SY Tel: 01707-872000

