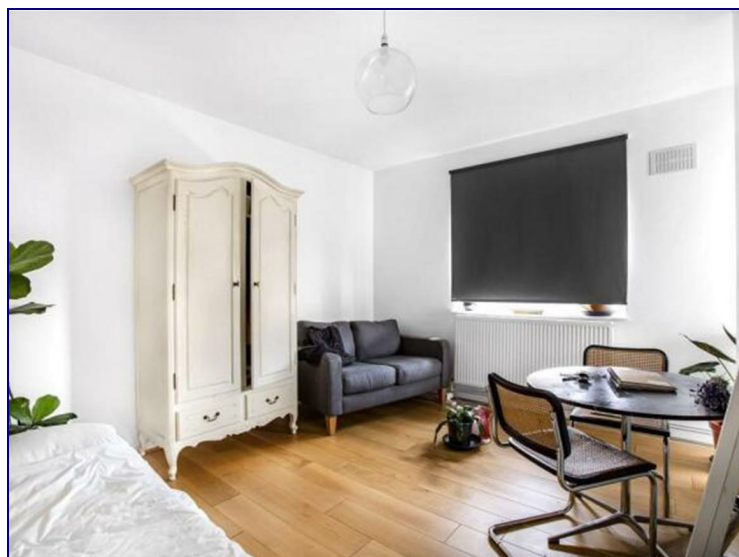
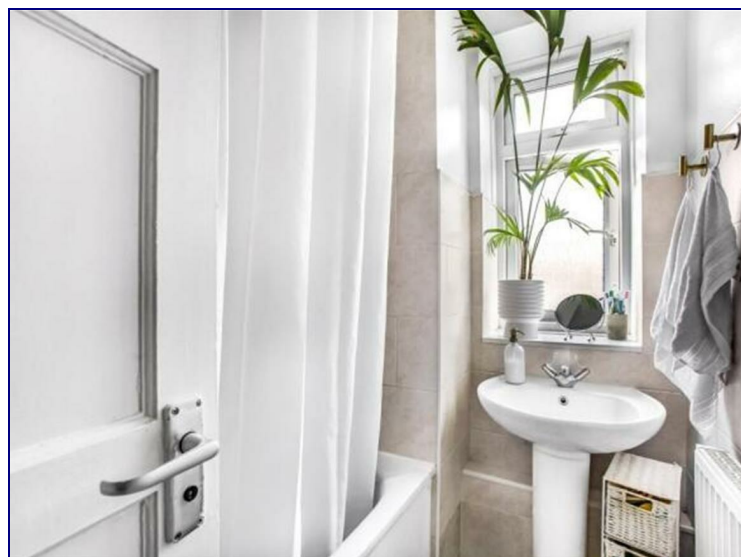


**Elderfield Road, London, E5 0AY**



**£2,100**

Well placed moments from the ever-popular Chatsworth Road in Hackney E5, is this spacious tWO double bedroom apartment. Set on the upper floor of a small purpose-built block, this brilliant apartment benefits from a modern fitted eat-in kitchen, two large double bedrooms - two with built in storage, private balcony and a stylish bathroom. Located within easy reach of Homerton Overground station, Hackney Central and London Fields. Ideal for professional sharers, early viewings are highly recommended.

