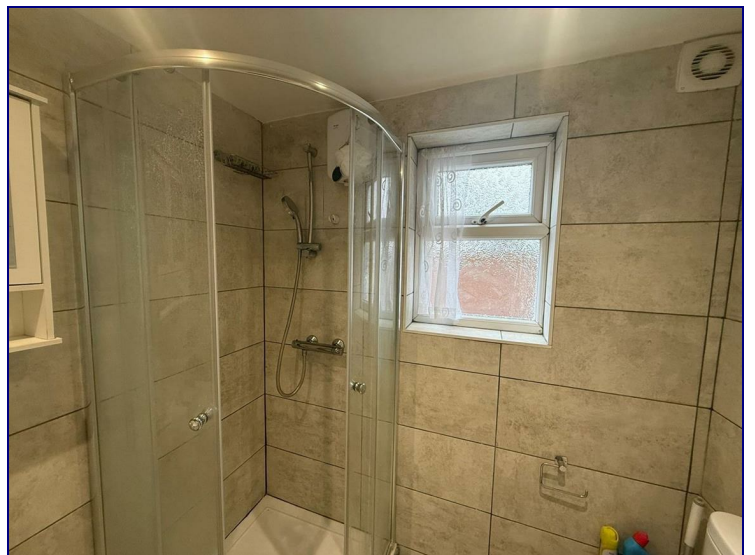


Colegrave Road, London, E15 1DZ



£1,400

An excellent one-bedroom / two flat situated on the ground floor - Ideal for professionals or couples, the property offers a bright and spacious living room filled with natural light and featuring an attractive fireplace, a well-proportioned double bedroom, a generous kitchen, and a stylish, recently fitted bathroom.

Conveniently located on Colegrave Road, the property is within easy walking distance of Leyton Station and Stratford International, offering excellent transport links. The green open spaces of Queen Elizabeth Olympic Park and the extensive amenities of Westfield Shopping Centre are also nearby.



