



[www.kings-group.net](http://www.kings-group.net)

488 Bethnal Green Road

London E2 0EA

Tel: 0207 613 2121

**Fishguard Way, London, E16 2RZ**

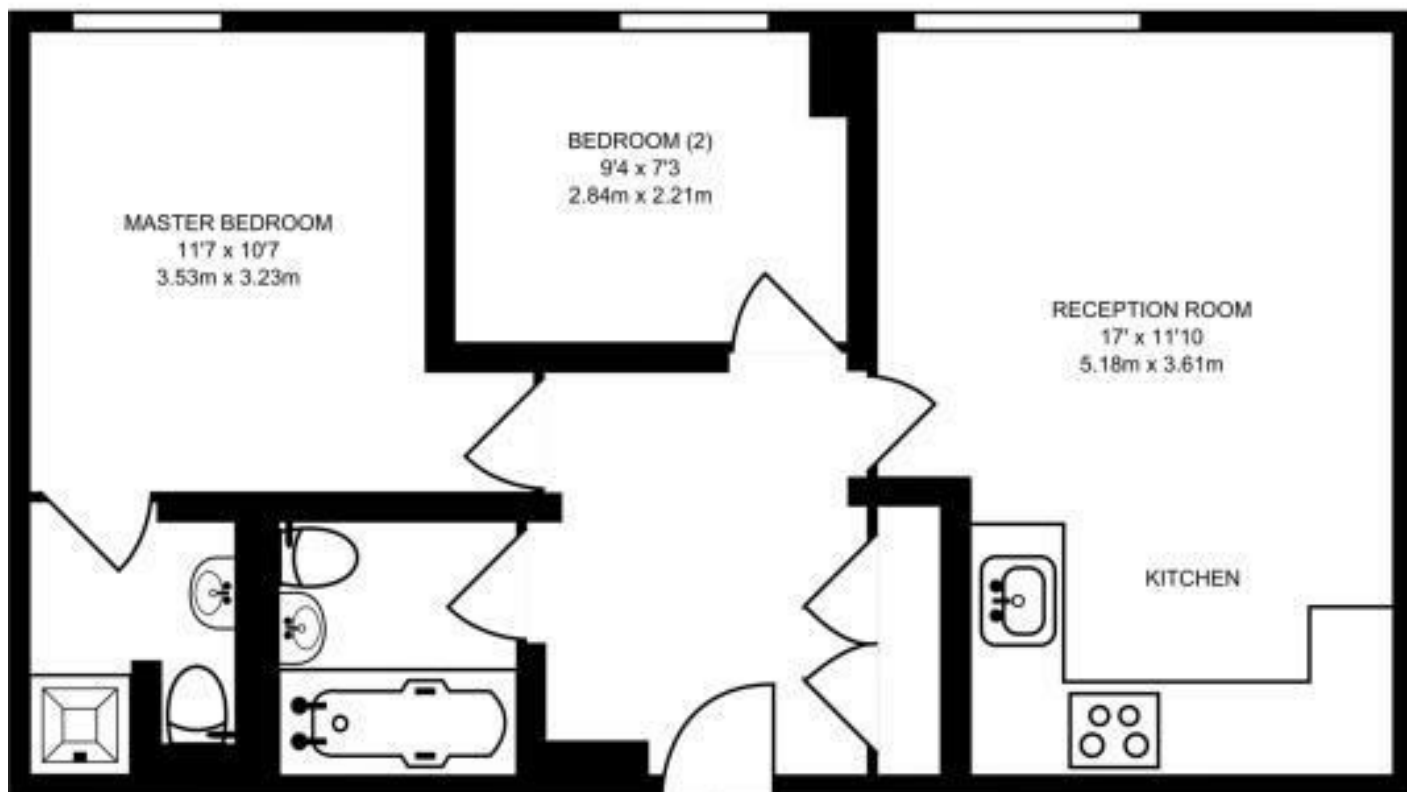


**£1,650 Per Month**

Enviably located along the banks of the River Thames, this sleek 2 bedroom flat offers bright interiors throughout, a chic reception room/kitchen and two elegant washrooms.


Fishguard Way is quiet residential address wonderfully located for the many amenities on offer in Gallions Reach.





  
**SECOND FLOOR**  
 524 SQ FT/48.74 SQ M

This plan has been drawn for illustrative and identification purposes only.

Energy Efficiency Rating		
	Current	Potential
Very energy efficient - lower running costs		
(92 plus) <b>A</b>		
(81-91) <b>B</b>		
(69-80) <b>C</b>		
(55-68) <b>D</b>		
(39-54) <b>E</b>		
(21-38) <b>F</b>		
(1-20) <b>G</b>		
Not energy efficient - higher running costs		
<b>England &amp; Wales</b>	EU Directive 2002/91/EC	

Environmental Impact (CO <sub>2</sub> ) Rating		
	Current	Potential
Very environmentally friendly - lower CO <sub>2</sub> emissions		
(92 plus) <b>A</b>		
(81-91) <b>B</b>		
(69-80) <b>C</b>		
(55-68) <b>D</b>		
(39-54) <b>E</b>		
(21-38) <b>F</b>		
(1-20) <b>G</b>		
Not environmentally friendly - higher CO <sub>2</sub> emissions		
<b>England &amp; Wales</b>	EU Directive 2002/91/EC	