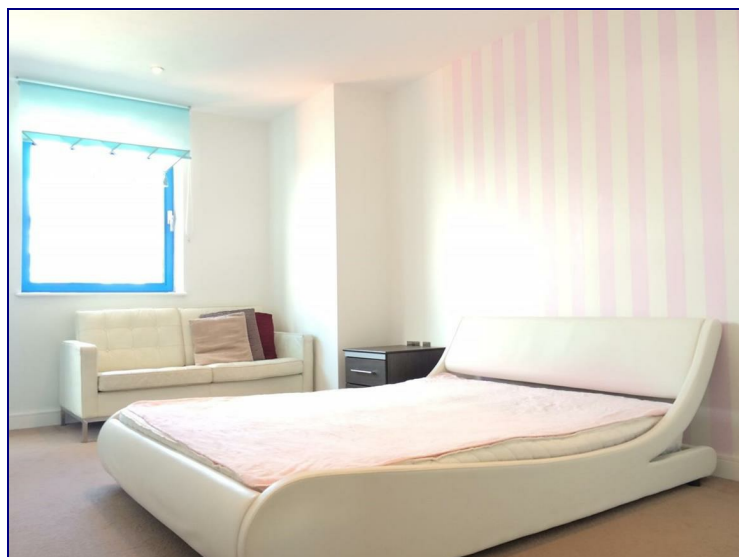
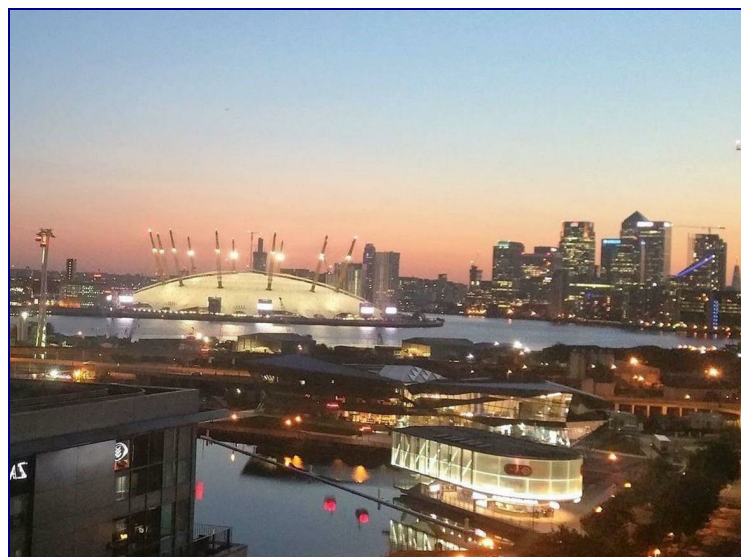


Western Gateway, London, E16 1BP



£1,325 Per Month

****IMPECCABLE NEW BUILD 1 BED FLAT**** A large attractive apartment.

24 hour concierge and security gated entrance.

The apartment has a PRIVATE BALCONY LOOKER OVER THE DOCKSIDE. Fitted kitchen, DESIGNER BATHROOM, SPACIOUS AND THREE LIGHT DOUBLE BEDROOM. 2 minutes walk from Royal Victoria Station (Docklands Light Railway) 2 minutes walk to local Tesco.

Within a short distance to Canary Wharf, local amenities, this property is an excellent choice.

CALL NOW TO ARRANGE A VIEWING.



Energy Efficiency Rating		
	Current	Potential
Very energy efficient - lower running costs		
(92 plus) A		
(81-91) B		
(69-80) C		
(55-68) D		
(39-54) E		
(21-38) F		
(1-20) G		
Not energy efficient - higher running costs		
England & Wales	EU Directive 2002/91/EC	

Environmental Impact (CO ₂) Rating		
	Current	Potential
Very environmentally friendly - lower CO ₂ emissions		
(92 plus) A		
(81-91) B		
(69-80) C		
(55-68) D		
(39-54) E		
(21-38) F		
(1-20) G		
Not environmentally friendly - higher CO ₂ emissions		
England & Wales	EU Directive 2002/91/EC	

