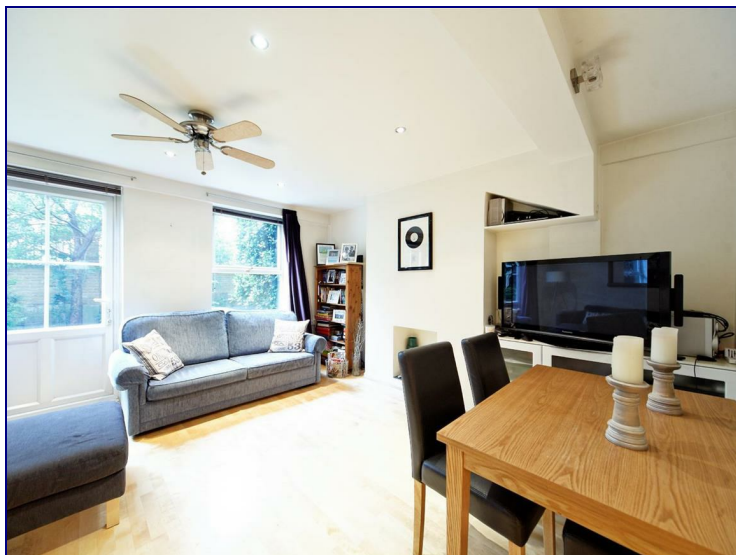


Milk Yard, London, E1W 3TB




£2,100 Per Month

A light and airy ground floor apartment in the much sought-after development, Riverside Mansions WITH A LOVELY GARDEN SPACE. This complex is located on Milk Yard which is a quiet residential area in Wapping within easy reach of local amenities and excellent transport links. The development benefits from a daytime Building Manager. This building has a newly equipped private residents gym and a private laundry as well as full CCTV. The property is located in central Wapping, minutes walk from Wapping Overground and Shadwell DLR.

CALL NOW TO AVOID DISAPPOINTMENT!



Energy Efficiency Rating		
	Current	Potential
Very energy efficient - lower running costs		
(92 plus) A		
(81-91) B		
(69-80) C		
(55-68) D		
(39-54) E		
(21-38) F		
(1-20) G		
Not energy efficient - higher running costs		
England & Wales	EU Directive 2002/91/EC	

Environmental Impact (CO ₂) Rating		
	Current	Potential
Very environmentally friendly - lower CO ₂ emissions		
(92 plus) A		
(81-91) B		
(69-80) C		
(55-68) D		
(39-54) E		
(21-38) F		
(1-20) G		
Not environmentally friendly - higher CO ₂ emissions		
England & Wales	EU Directive 2002/91/EC	