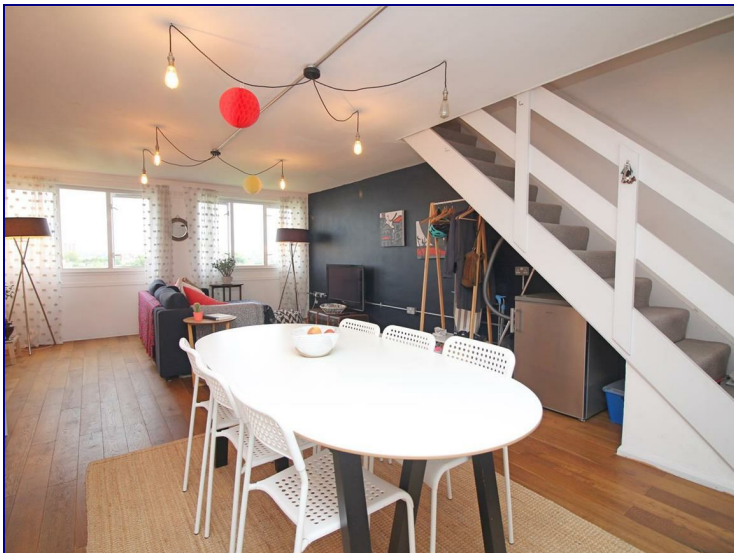


## O'leary Square, London, E1 3AR



**£2,000 Per Month**

A well-proportioned 2 BED 2 BATH duplex flat set on the 6th and 7th floor of a secure purpose built block with lift access. Comprising two double bedrooms, generous kitchen/diner, good size reception, 2 bathrooms and a large storage area.

Enjoying an excellent location within a short equal distance to both Stepney tube and Whitechapel station, home to the new Crossrail terminal. O'Leary Square is well located for the shops, restaurants and cinema of Mile End Road, the fantastic amenities of Moorgate in the City and the Canary Wharf Complex in the Isle of Dogs are also close.





