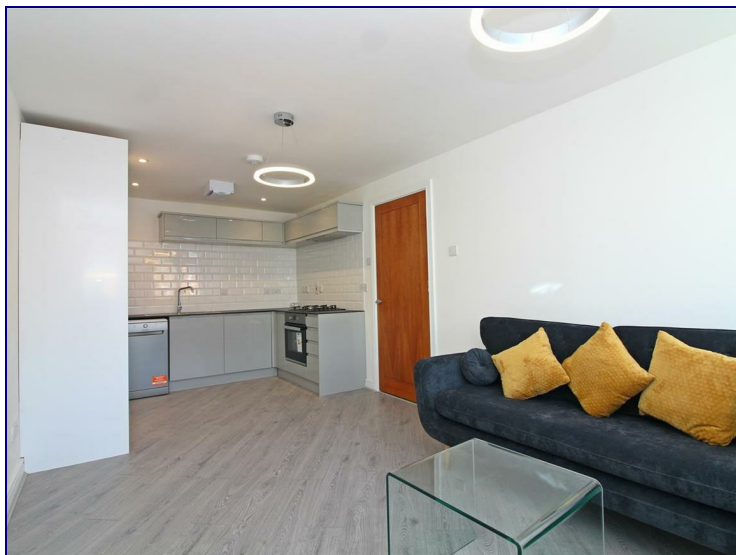


**118 Jamaica Street, London, E1 3HY**



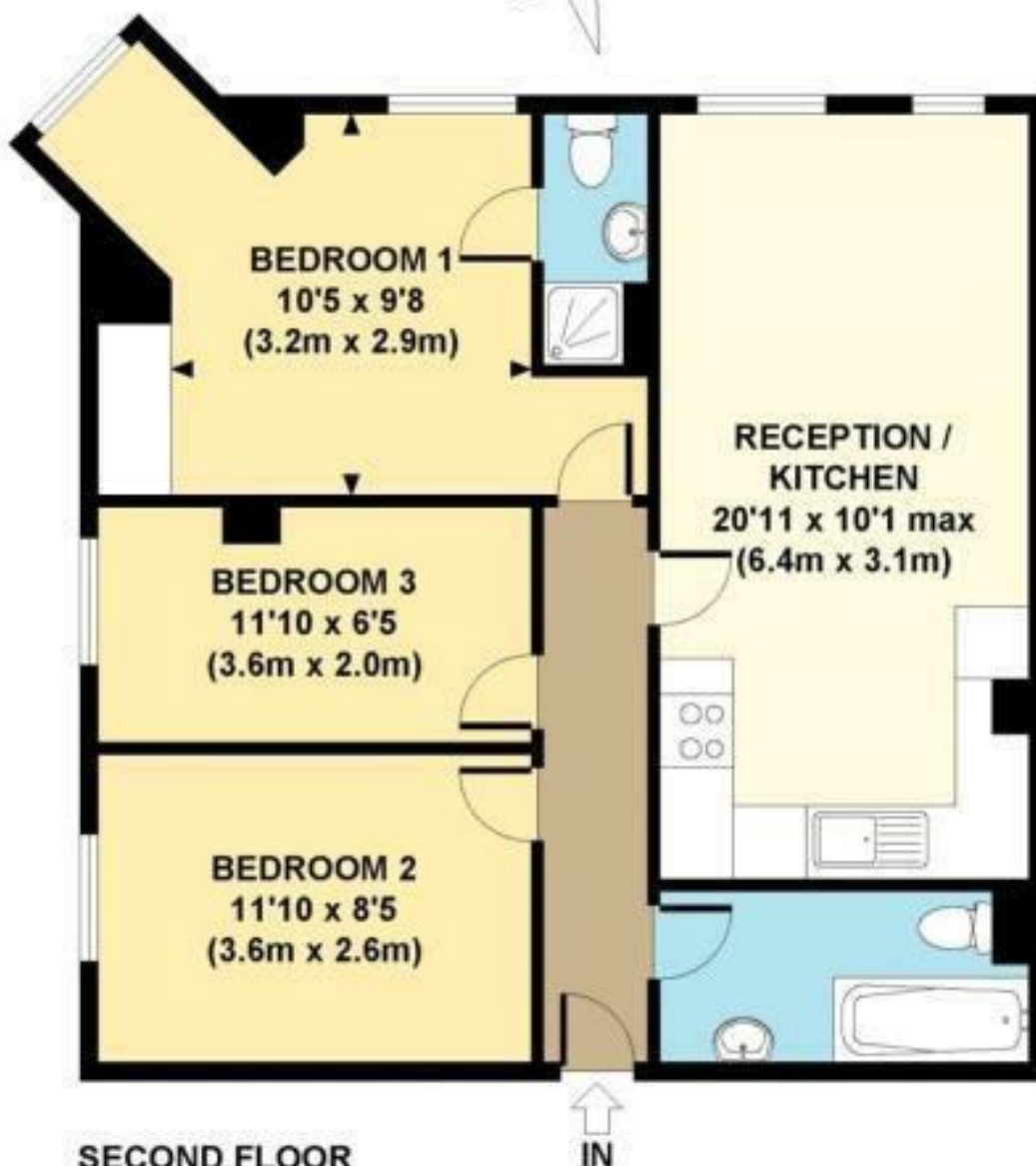
**£3,000 Per Month**

This fantastic property comprises of a very large and bright kitchen, LARGE DOUBLE BEDROOMS . GOOD SIZED BATHROOM & EN-SUITE FULLY FURNISHED. IMMACULATE CONDITION.

The property is superbly positioned close to Stepney Green tube offering excellent links to the City, West End and Docklands, Queen Marry University and Stepney Green Park. Situated in the heart of Stepney Green, home to some of East London's finest eateries, bars and social hot-spots such as Brick Lane, Shoreditch and Spitalfields Market.

BOOK A VIEWING NOW TO AVOID DISAPPOINTMENT!





**APPROX. GROSS INTERNAL FLOOR AREA 665 SQ FT / 62 SQ M**

Energy Efficiency Rating		
	Current	Potential
Very energy efficient - lower running costs		
(92 plus) <b>A</b>		
(81-91) <b>B</b>		
(69-80) <b>C</b>		
(55-68) <b>D</b>		
(39-54) <b>E</b>		
(21-38) <b>F</b>		
(1-20) <b>G</b>		
Not energy efficient - higher running costs		
<b>England &amp; Wales</b>	80	84
	EU Directive 2002/91/EC	

Environmental Impact (CO <sub>2</sub> ) Rating		
	Current	Potential
Very environmentally friendly - lower CO <sub>2</sub> emissions		
(92 plus) <b>A</b>		
(81-91) <b>B</b>		
(69-80) <b>C</b>		
(55-68) <b>D</b>		
(39-54) <b>E</b>		
(21-38) <b>F</b>		
(1-20) <b>G</b>		
Not environmentally friendly - higher CO <sub>2</sub> emissions		
<b>England &amp; Wales</b>		
	EU Directive 2002/91/EC	



Associated Offices in London, Essex and Hertfordshire  
Kings Head Office Tudor Lodge, Burton Lane, Goffs Oak, Hertfordshire EN7 6SY Tel: 01707-872000

