



www.kings-group.net

488 Bethnal Green Road

London E2 0EA

Tel: 0207 613 2121

4 Prestons Road, London, E14 9EL



£1,750 Per Month

MODERN ONE BEDROOM FLAT CLOSE TO CANARY WHARF

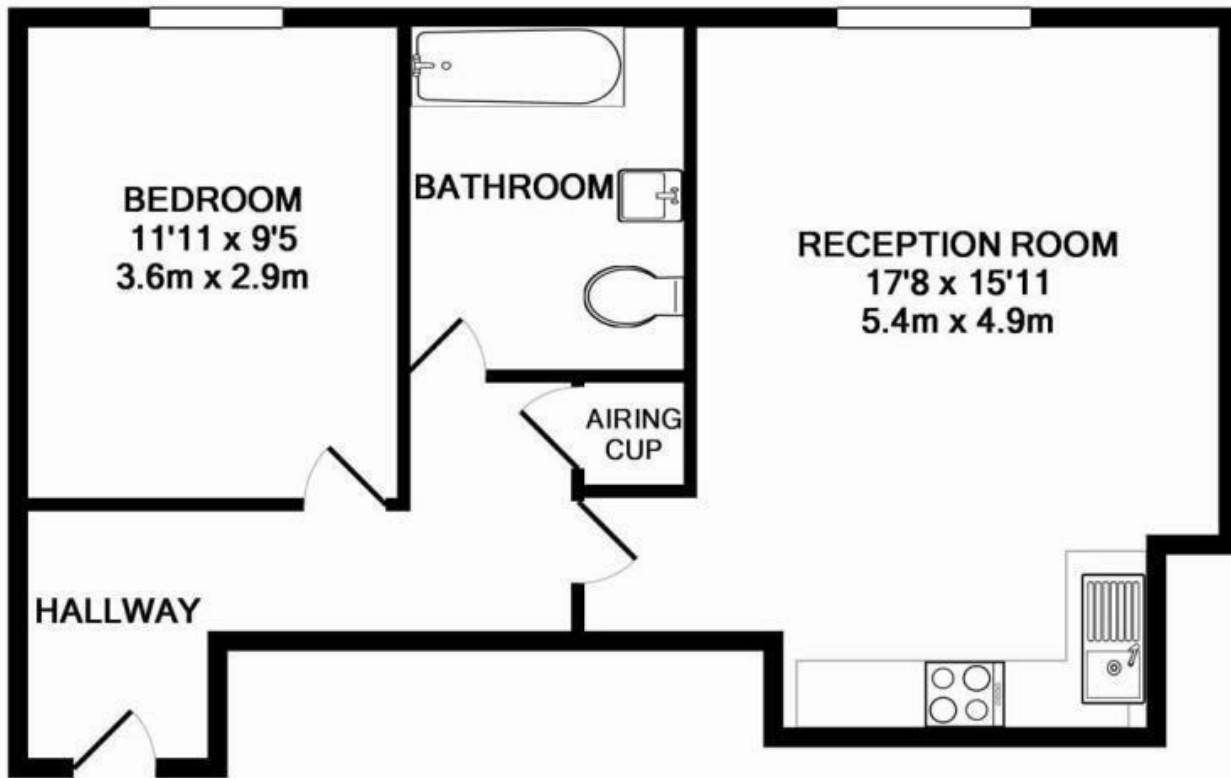
This one bedroom flat is situated on the 7th floor or the much sought after Wharfside Point development.

Benefits include a 24 hour concierge service, generous sized balcony, and the communal rooftop terrace on the same floor displaying panoramic views of London's skyline.

located adjacent to Blackwall DLR, residents can enjoy instant access into Canary Wharf.

CALL NOW TO AVOID DISAPPOINTMENT!





TOTAL APPROX. FLOOR AREA 487 SQ.FT. (45.2 SQ.M.)

Whilst every attempt has been made to ensure the accuracy of the floor plan contained here, measurements of doors, windows, rooms and any other items are approximate and no responsibility is taken for any error, omission, or mis-statement. This plan is for illustrative purposes only and should be used as such by any prospective purchaser. The services, systems and appliances shown have not been tested and no guarantee as to their operability or efficiency can be given

Made with Metropix ©2015



Energy Efficiency Rating		Current	Potential
Very energy efficient - lower running costs			
(92 plus) A			
(81-91) B			
(69-80) C			
(55-68) D			
(39-54) E			
(21-38) F			
(1-20) G			
Not energy efficient - higher running costs			
England & Wales	EU Directive 2002/91/EC	67	68

Environmental Impact (CO ₂) Rating		Current	Potential
Very environmentally friendly - lower CO ₂ emissions			
(92 plus) A			
(81-91) B			
(69-80) C			
(55-68) D			
(39-54) E			
(21-38) F			
(1-20) G			
Not environmentally friendly - higher CO ₂ emissions			
England & Wales	EU Directive 2002/91/EC	76	77



Associated Offices in London, Essex and Hertfordshire

Kings Head Office Tudor Lodge, Burton Lane, Goffs Oak, Hertfordshire EN7 6SY Tel: 01707-872000

