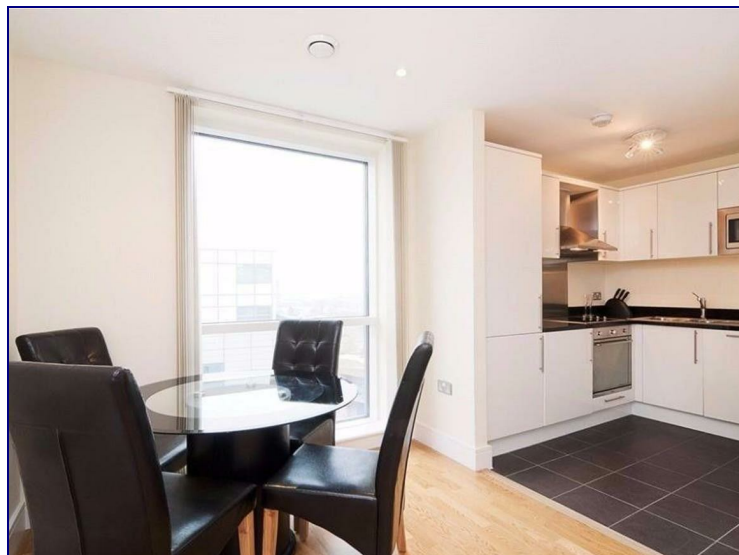


Prestons Road, London, E14 9EX



£1,349 Per Month


****MODERN ONE BEDROOM FLAT CLOSE TO CANARY WHARF****

This one bedroom flat is situated on the 10th floor or the much sought after Wharfside Point development. Benefits include a 24 hour concierge service, generous sized balcony, and the communal rooftop terrace on the same floor displaying panoramic views of London's skyline.

located adjacent to Blackwall DLR, residents can enjoy instant access into Canary Wharf.

CALL NOW TO AVOID DISAPPOINTMENT!!!!!!!!!!!!!!!!!!!!!!



Energy Efficiency Rating		
	Current	Potential
Very energy efficient - lower running costs		
(92 plus) A		
(81-91) B		
(69-80) C		
(55-68) D		
(39-54) E		
(21-38) F		
(1-20) G		
Not energy efficient - higher running costs		
England & Wales	EU Directive 2002/91/EC	

Environmental Impact (CO ₂) Rating		
	Current	Potential
Very environmentally friendly - lower CO ₂ emissions		
(92 plus) A		
(81-91) B		
(69-80) C		
(55-68) D		
(39-54) E		
(21-38) F		
(1-20) G		
Not environmentally friendly - higher CO ₂ emissions		
England & Wales	EU Directive 2002/91/EC	