



[www.kings-group.net](http://www.kings-group.net)

488 Bethnal Green Road

London E2 0EA

Tel: 0207 613 2121

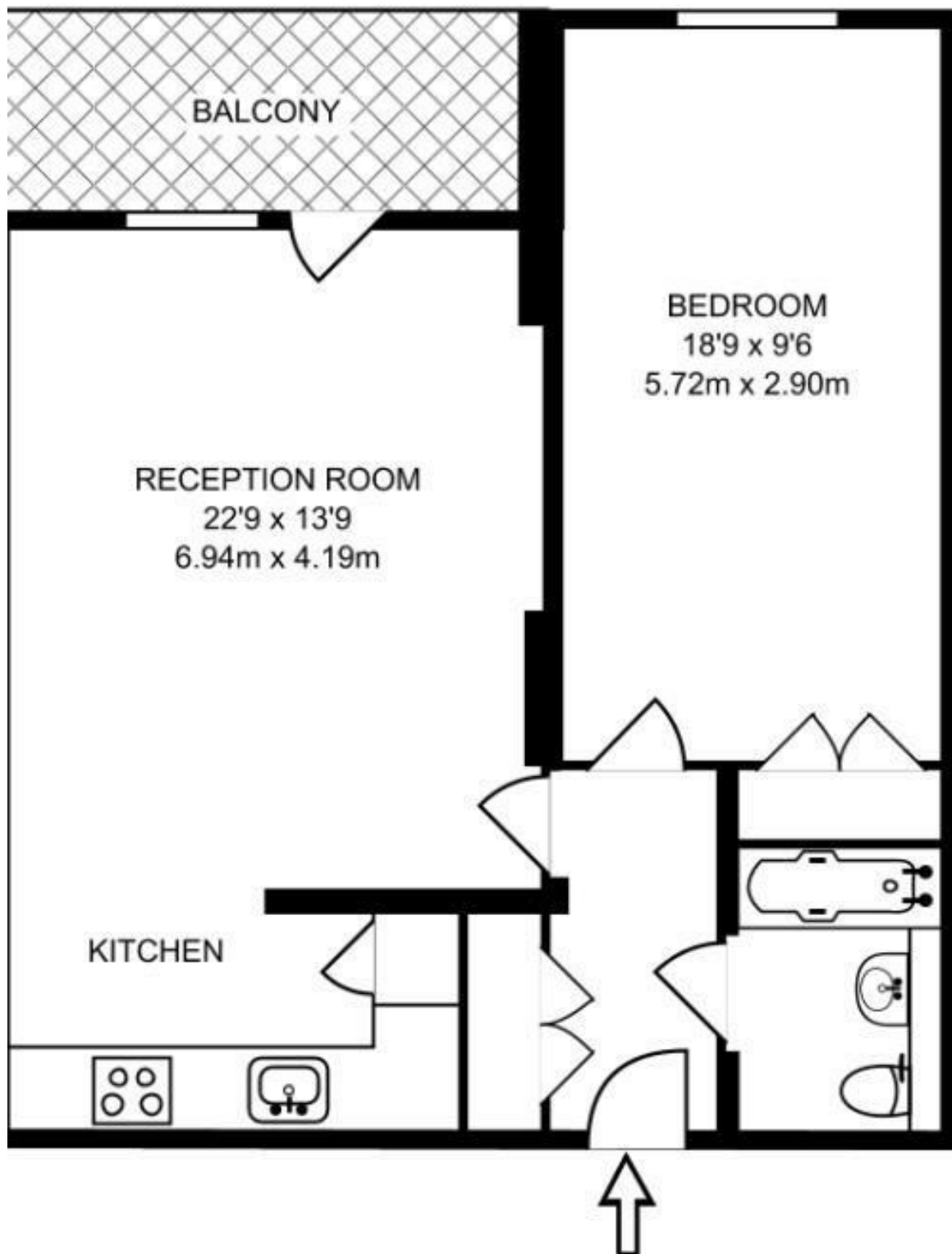
**Wapping Lane, London, E1W 2RG**



**£2,100 Per Month**

This spacious one bedroom flat benefits from open-plan living with a private balcony, large double bedroom with fitted wardrobe, secure entry and lift access. Located within the heart of Wapping and just 15 minutes commute from both Canary Wharf & The City. Close to St Katherine's Dock, Wapping High Street & Station.





Energy Efficiency Rating		
	Current	Potential
Very energy efficient - lower running costs		
(92 plus) <b>A</b>		
(81-91) <b>B</b>		
(69-80) <b>C</b>		
(55-68) <b>D</b>		
(39-54) <b>E</b>		
(21-38) <b>F</b>		
(1-20) <b>G</b>		
Not energy efficient - higher running costs		
<b>England &amp; Wales</b>	EU Directive 2002/91/EC	

Environmental Impact (CO <sub>2</sub> ) Rating		
	Current	Potential
Very environmentally friendly - lower CO <sub>2</sub> emissions		
(92 plus) <b>A</b>		
(81-91) <b>B</b>		
(69-80) <b>C</b>		
(55-68) <b>D</b>		
(39-54) <b>E</b>		
(21-38) <b>F</b>		
(1-20) <b>G</b>		
Not environmentally friendly - higher CO <sub>2</sub> emissions		
<b>England &amp; Wales</b>	EU Directive 2002/91/EC	