



www.kings-group.net

488 Bethnal Green Road
London E2 0EA
Tel: 0207 613 2121

Teale Street, London, E2 9AE



£1,750 Per Month

Fantastic two double bedroom apartment close to the ever popular Broadway Market! The property consists of spacious lounge, modern fitted kitchen, two double bedrooms, modern bathroom. Perfectly located close to Broadway Market with its array of bars and cafes' walkways and cycle paths of Regents Canal as well as being just a short distance from Columbia Road and the Shoreditch scene. Easy access to the City with local bus routes.

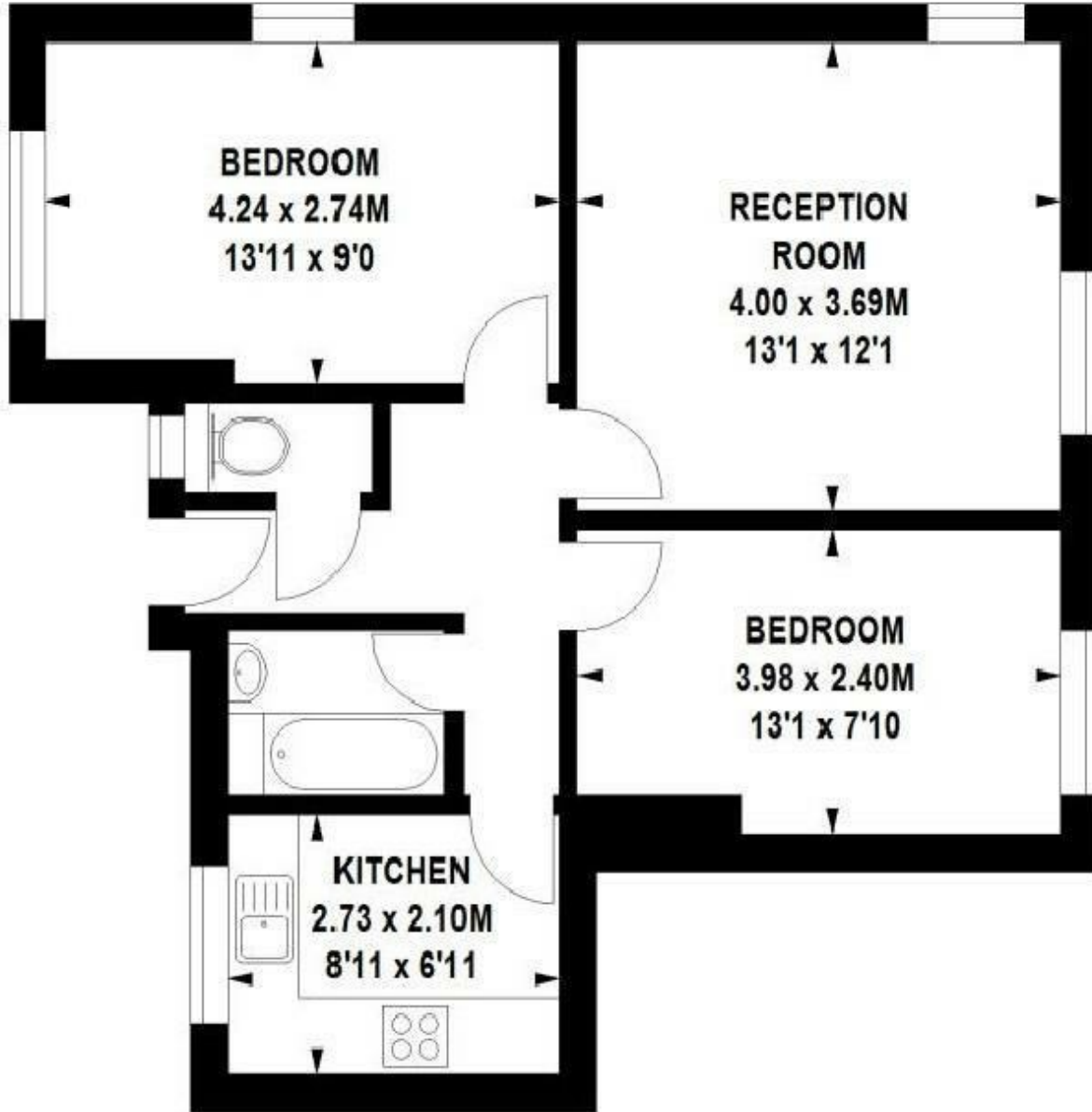
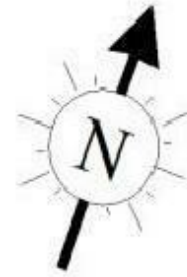
Quick Viewing Recommended!



Beechwood House, E2

Approximate gross internal area

52.77 sq m / 568 sq ft



Energy Efficiency Rating		
	Current	Potential
Very energy efficient - lower running costs		
(92 plus) A		
(81-91) B		
(69-80) C		
(55-68) D		
(39-54) E		
(21-38) F		
(1-20) G		
Not energy efficient - higher running costs		
England & Wales	EU Directive 2002/91/EC	

Environmental Impact (CO ₂) Rating		
	Current	Potential
Very environmentally friendly - lower CO ₂ emissions		
(92 plus) A		
(81-91) B		
(69-80) C		
(55-68) D		
(39-54) E		
(21-38) F		
(1-20) G		
Not environmentally friendly - higher CO ₂ emissions		
England & Wales	EU Directive 2002/91/EC	



Associated Offices in London, Essex and Hertfordshire
Kings Head Office Tudor Lodge, Burton Lane, Goffs Oak, Hertfordshire EN7 6SY Tel: 01707-872000

