

8A Sun Street
Waltham Abbey
Essex
EN9 1EE

T: 01992 652006
www.kings-group.net



Quaker Lane, EN9 1HR



Asking Price £165,000 Leasehold



Kings Group Waltham Abbey are pleased to offer this one-bedroom retirement apartment for sale. The property has a good-sized entrance hallway with built-in storage. The living room measures 13'7" x 10'0" and provides space for seating and dining. The kitchen includes eye-level units, tiled splashbacks, and fitted appliances.

The bedroom is a double with space for storage. The bathroom is fully tiled and fitted with a white three-piece suite.

The apartment is a short walk from Waltham Abbey town centre, where local shops and services are available. There is ample parking on site, and a bus stop is located just one minute away.

For more information or to arrange a viewing, please contact Kings Group Waltham Abbey on 01992 652 006.

Coverage
Mobile (based on calls indoors)
O2 - Good
EE - Good
Three - Average
Vodafone - Average

Broadband (estimated speeds)
Standard 12 mbps
Superfast 132 mbps
Ultrafast 1800 mbps

Satellite & Cable TV Availability
BT
Sky
Virgin

HALL

LIVING ROOM 13'7 x 10'0

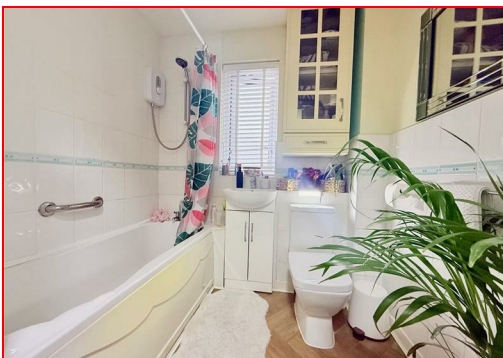
KITCHEN 9'05 x 6'07

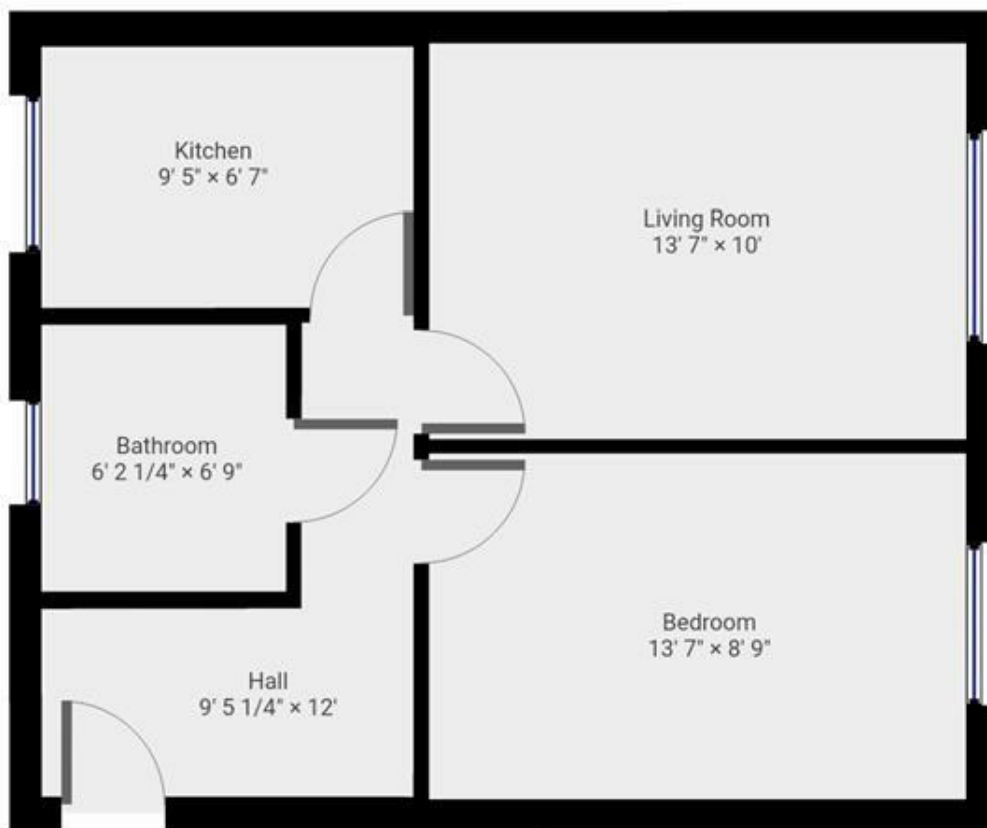
BEDROOM 13'07 x 8'9

BATHROOM 6'09 x 5'06

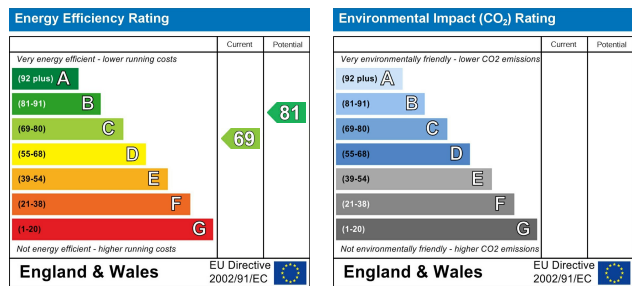
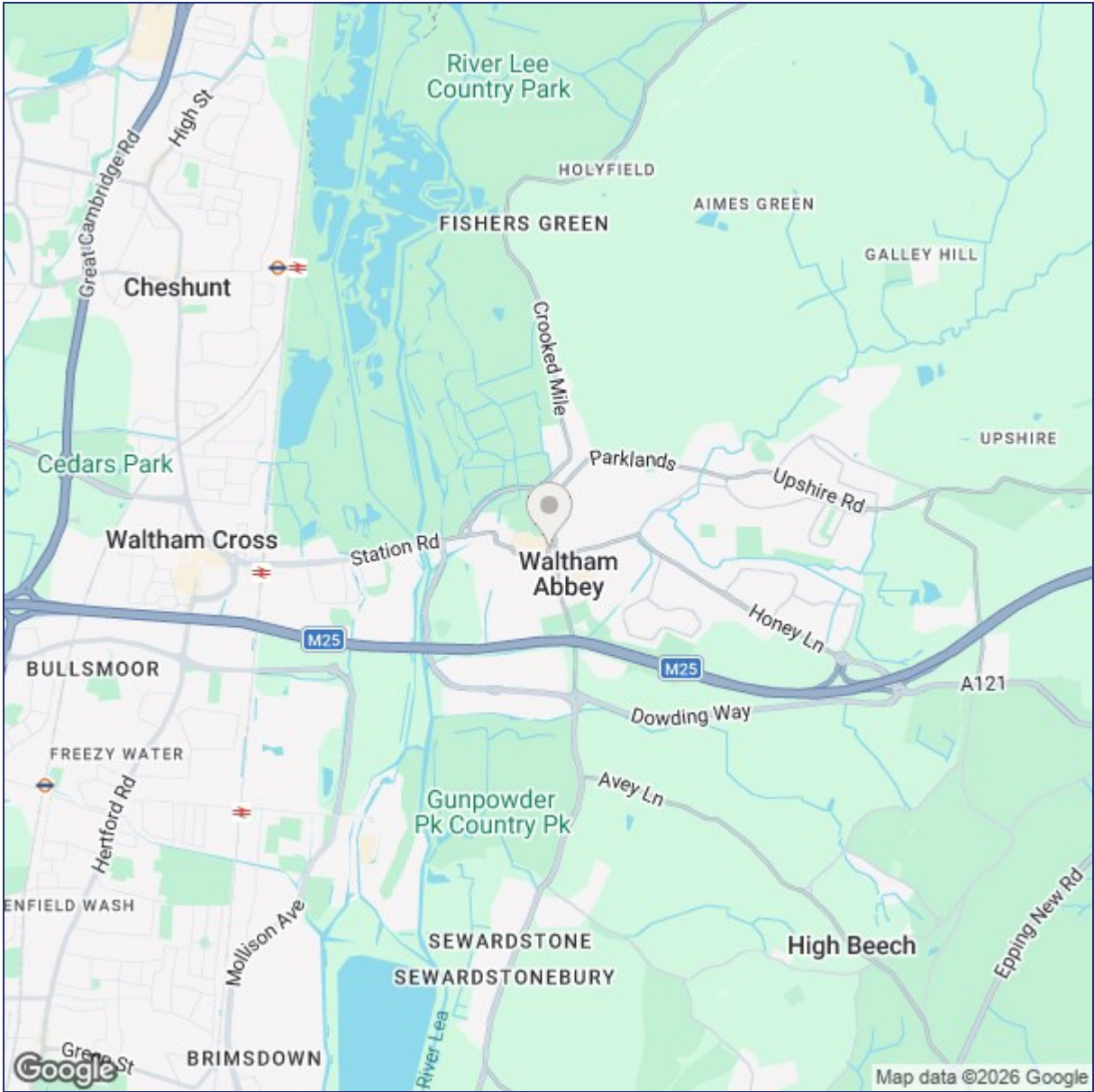
DISCLAIMER

1. MONEY LAUNDERING REGULATIONS: Intending purchasers will be asked to produce identification documentation at a later stage and we would ask for your co-operation in order that there will be no delay in agreeing the sale.
2. General: While we endeavour to make our sales particulars fair, accurate and reliable, they are only a general guide to the property and, accordingly, if there is any point which is of particular importance to you, please contact the office and we will be pleased to check the position for you
3. The measurements indicated are supplied for guidance only and as such must be considered incorrect.
4. Services: Please note we have not tested the services or any of the equipment or appliances in this property, accordingly we strongly advise prospective buyers to commission their own survey or service reports before finalising their offer to purchase.
5. References to tenure of a property are based upon information supplied by the vendor. The agent has not had sight of the title documents, a buyer is advised to obtain verification from their solicitor.
6. THESE PARTICULARS ARE ISSUED IN GOOD FAITH BUT DO NOT CONSTITUTE REPRESENTATIONS OF FACT OR FORM PART OF ANY OFFER OR CONTRACT. THE MATTERS REFERRED TO IN THESE PARTICULARS SHOULD BE INDEPENDENTLY VERIFIED BY PROSPECTIVE BUYERS OR TENANTS. KINGS GROUP NOR ANY OF ITS EMPLOYEES OR AGENTS HAS ANY AUTHORITY TO MAKE OR GIVE ANY REPRESENTATION OR WARRANTY WHATEVER IN RELATION TO THIS PROPERTY.





THIS FLOORPLAN IS PROVIDED WITHOUT WARRANTY OF ANY KIND. SENSOPIA DISCLAIMS ANY WARRANTY INCLUDING, WITHOUT LIMITATION, SATISFACTORY QUALITY OR ACCURACY OF DIMENSIONS.



("These details are correct at time of going to press").

THE PROPERTY MISDESCRIPTIONS ACT 1991. The agent has not tested any apparatus, equipment, fixtures or services and so cannot verify that they are in working order, or fit for the purpose. References to the Tenure of a property are based on information supplied by the vendor. The agent has not had sight of the Title documents. A buyer is advised to obtain verification from their Solicitor or Surveyor.

