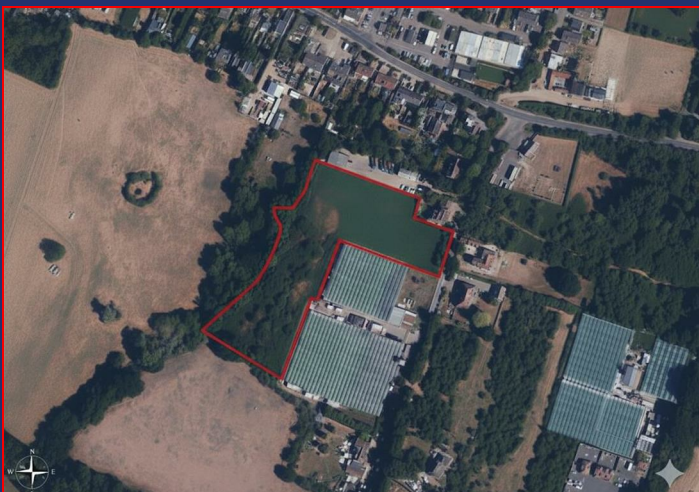


8A Sun Street
Waltham Abbey
Essex
EN9 1EE

T: 01992 652006
www.kings-group.net



Paynes Lane, Nazeing EN9 2EU



Guide Price £850,000 Freehold

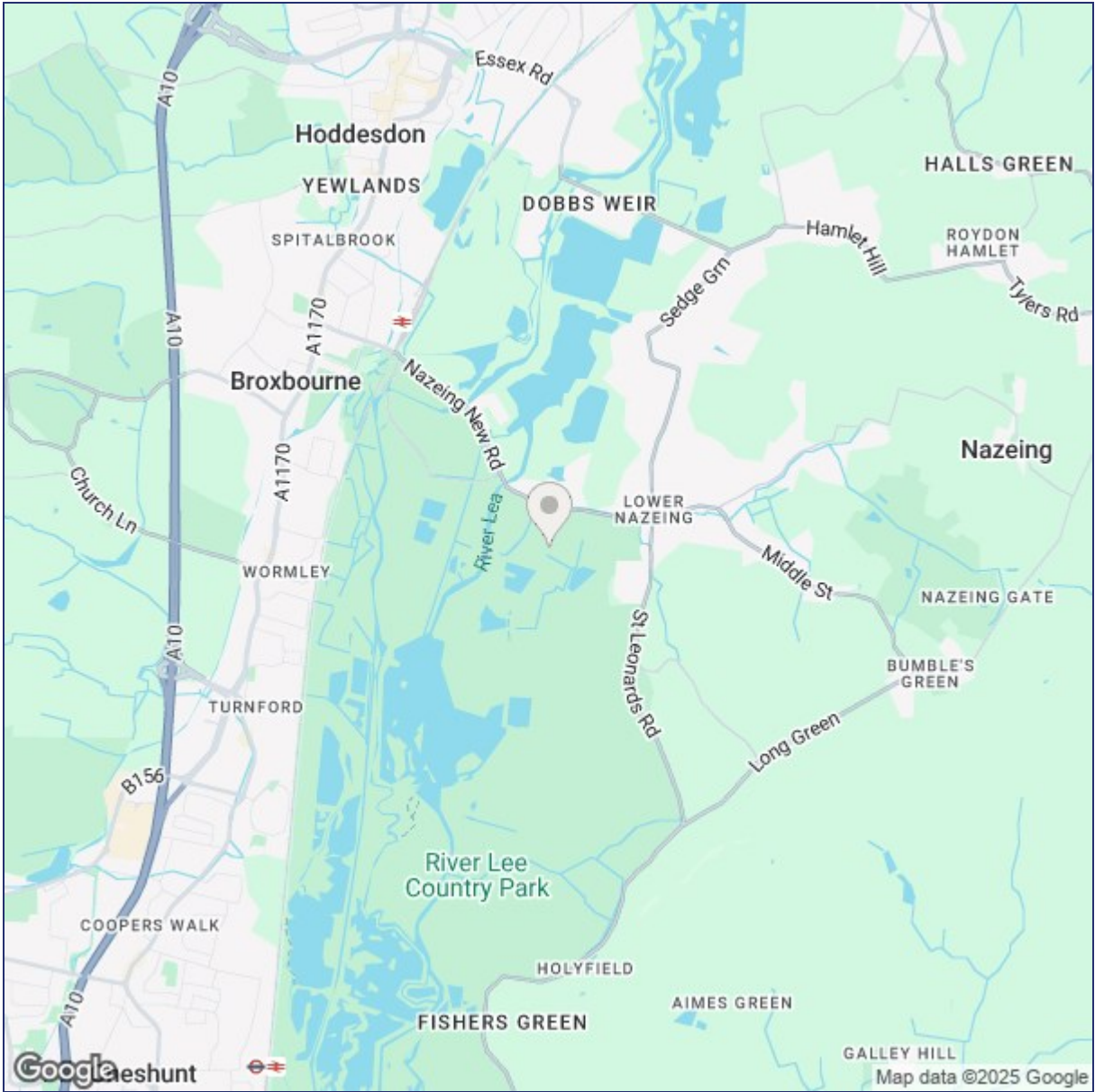


Seize this exceptional opportunity to acquire a substantial 3.3-acre parcel of land in the desirable EN9 postcode. Located off Paynes Lane and adjacent to Oaklands Nursery, the site offers a unique blend of a semi-rural setting with the all important road access. The plot is a fantastic investment for anyone seeking a secure, versatile space for residential, agricultural, horticultural, or equestrian pursuits, subject to planning. call the office now for further details 01992 652 006

8A Sun Street, Waltham Abbey, Essex, EN9 1EE

T: 01992 652006
www.kings-group.net





Energy Efficiency Rating			Environmental Impact (CO ₂) Rating		
	Current	Potential		Current	Potential
Very energy efficient - lower running costs			Very environmentally friendly - lower CO ₂ emissions		
(92 plus) A			(92 plus) A		
(81-91) B			(81-91) B		
(69-80) C			(69-80) C		
(55-68) D			(55-68) D		
(39-54) E			(39-54) E		
(21-38) F			(21-38) F		
(1-20) G			(1-20) G		
Not energy efficient - higher running costs			Not environmentally friendly - higher CO ₂ emissions		
England & Wales			England & Wales		
EU Directive 2002/91/EC			EU Directive 2002/91/EC		

(“These details are correct at time of going to press”).

THE PROPERTY MISDESCRIPTIONS ACT 1991. The agent has not tested any apparatus, equipment, fixtures or services and so cannot verify that they are in working order, or fit for the purpose. References to the Tenure of a property are based on information supplied by the vendor. The agent has not had sight of the Title documents. A buver is advised to obtain verification from their Solicitor or Surveyor.

