



www.kings-group.net

186 Hertford Road
Enfield EN3 5AZ
Tel: 020 8805 5959

Pembroke Avenue, Enfield, EN1 4HA
Offers In The Region Of £440,000

KINGS GROUP offer This charming two-bedroom house is situated in one of Enfield's most sought-after locations and offers a wonderful opportunity for buyers seeking a family-friendly home. The property features a bright and welcoming lounge and dining room that flows seamlessly for everyday living and entertaining. On the first floor there is a bathroom serving the two bedrooms. To the front of the house there is off-street parking, while to the rear a generous private garden provides a peaceful outdoor space for relaxing, gardening, or play.

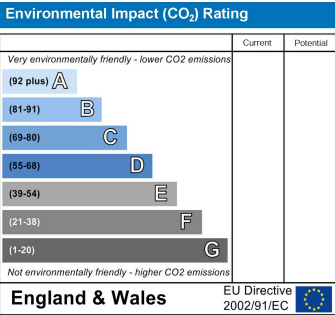
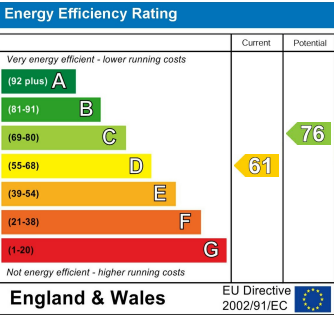
Within just a quarter of a mile you will find excellent local schools including Carterhatch Infant and Junior Schools, Enfield Heights Academy, Bishop Stopford's School and St James CofE Primary School, making this an ideal choice for families with children of all ages. Shops, cafés, GP surgeries and dental practices are also within easy walking distance, ensuring day-to-day convenience is right on your doorstep. For leisure and recreation, Enfield Town Park and the Dugdale Arts Centre offer green space and cultural experiences close by.

Commuters will appreciate the excellent transport links, with Turkey Street Overground station just 0.7 miles away and Southbury and Brimsdown stations also nearby. The property sits within London Travel Zone 6 and provides straightforward access to the Great Cambridge Road and other main routes.

With its combination of modern comfort, private outdoor space and exceptional access to schools, shops and transport, this property makes an outstanding family home. Viewings are highly recommended.

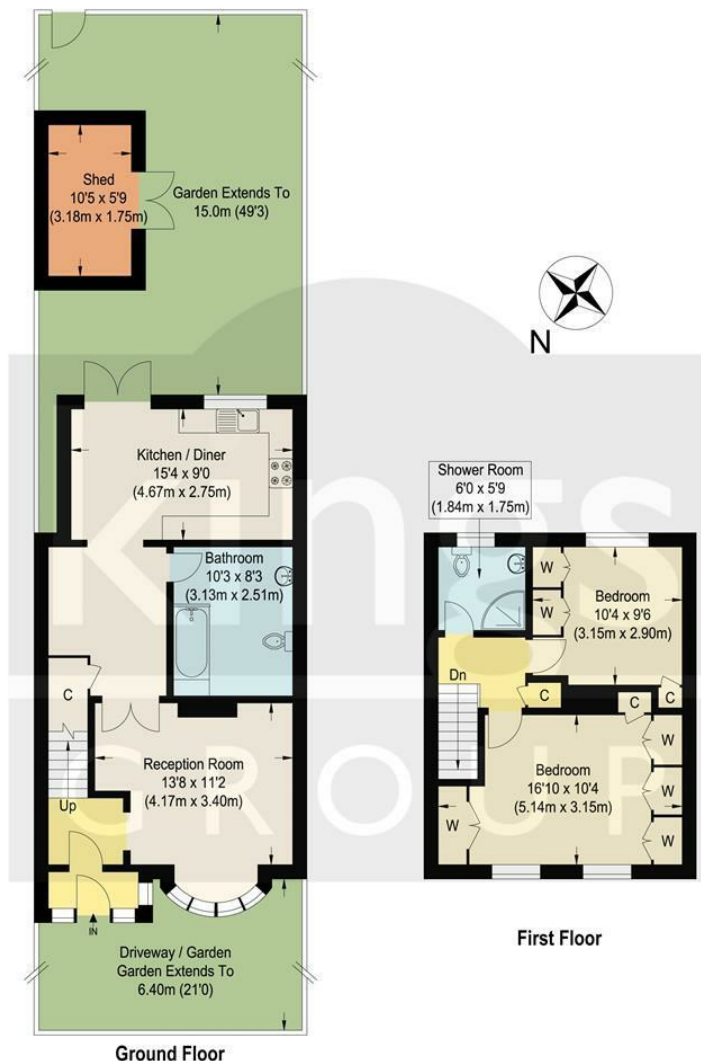
Freehold
Standard Construction
Flood Risk "Low"
EPC Band D
Council Tax Band D











Pembroke Avenue, EN1

Approximate Gross Internal Floor Area : 85.20 sq m / 917.08 sq ft
(Excluding Shed)

Shed Area : 5.60 sq m / 60.27 sq ft

Illustration for identification purposes only, measurements are approximate, not to scale.

