



Baker Street, Enfield, EN1 3LQ

Offers In Excess Of £299,995 Freehold

Kings Group are delighted to present a rare and exciting opportunity to acquire this substantial freehold commercial property, prominently positioned on Baker Street, EN1, within the heart of Enfield.

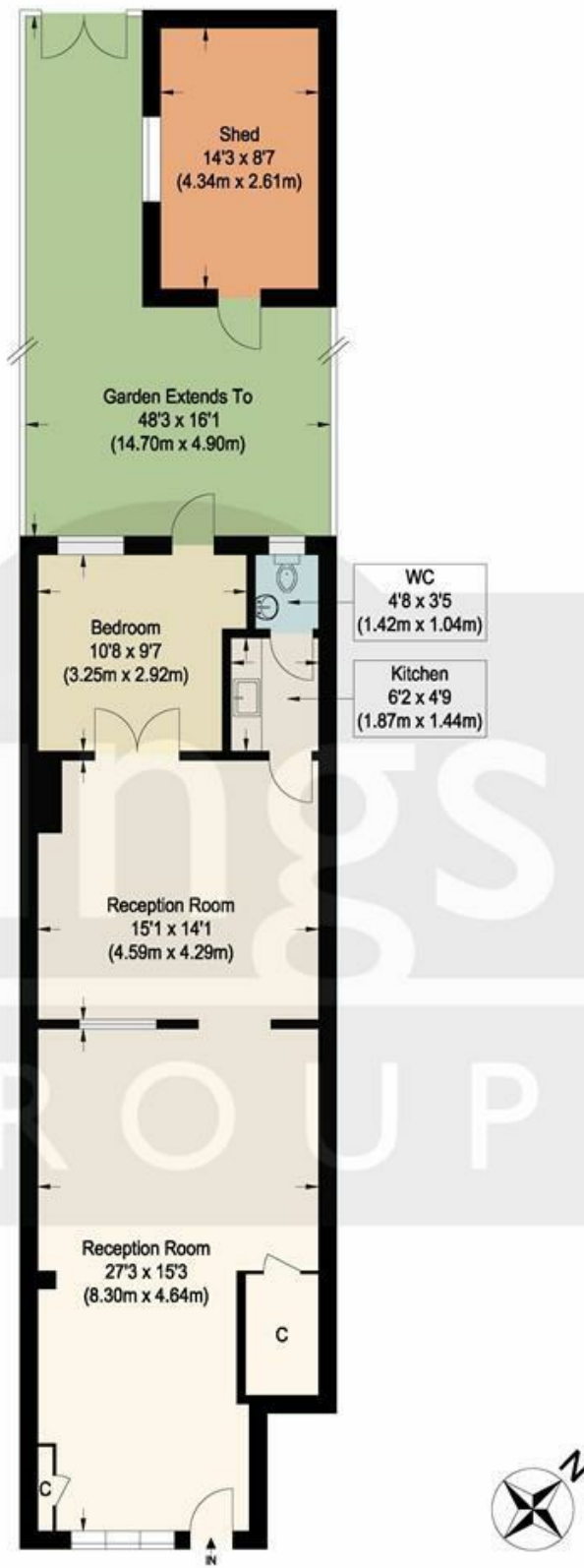
Vacant Possession | Freehold | Estimated Rental Income £28,000–£30,000 PA

Situated within a busy and well-connected location, the property benefits from excellent footfall and close proximity to a wide range of local amenities, shops, cafés, schools, supermarkets, and transport links.

Location Highlights

The property is conveniently located within walking distance of Enfield Town Station, providing direct rail links into London Liverpool Street, whilst numerous nearby bus routes offer excellent connectivity to Edmonton, Tottenham, and surrounding areas.

Baker Street, Enfield, EN1 3LQ



**Ground Floor
Baker Street**

Approximate Gross Internal Floor Area : 72.30 sq m / 778.23 sq ft (Excluding Shed)

Shed Area : 11.30 sq m / 121.63 sq ft

Illustration for identification purposes only, measurements are approximate, not to scale.



Associated Offices in London, Essex and Hertfordshire

Kings Head Office Tudor Lodge, Burton Lane, Goffs Oak, Hertfordshire EN7 6SY Tel: 01707-872000

