



www.kings-group.net

186 Hertford Road
Enfield EN3 5AZ
Tel: 020 8805 5959

Cobbett Close, Enfield, EN3 6QT
Offers In The Region Of £210,000

- NFOPP accredited agency & ceMAP mortgage advisors
- Situated in a quiet cul-de-sac turning off the Hertford Road
- Residents' dedicated car park within estate
- Proximity to Waltham Cross & Turkey Street train stations
- Offered to the market rarely chain-free

KINGS GROUP offer to market this charming flat located on Cobbett Close in the vibrant area of Enfield, London. This delightful property presents a perfect blend of comfort and convenience, making it an ideal choice for individuals or couples seeking a cosy home.

Upon entering, you will find a well-proportioned reception room that serves as a welcoming space for relaxation and entertainment. The room is filled with natural light, creating a warm and inviting atmosphere. It is the perfect spot to unwind after a long day or to host friends and family.

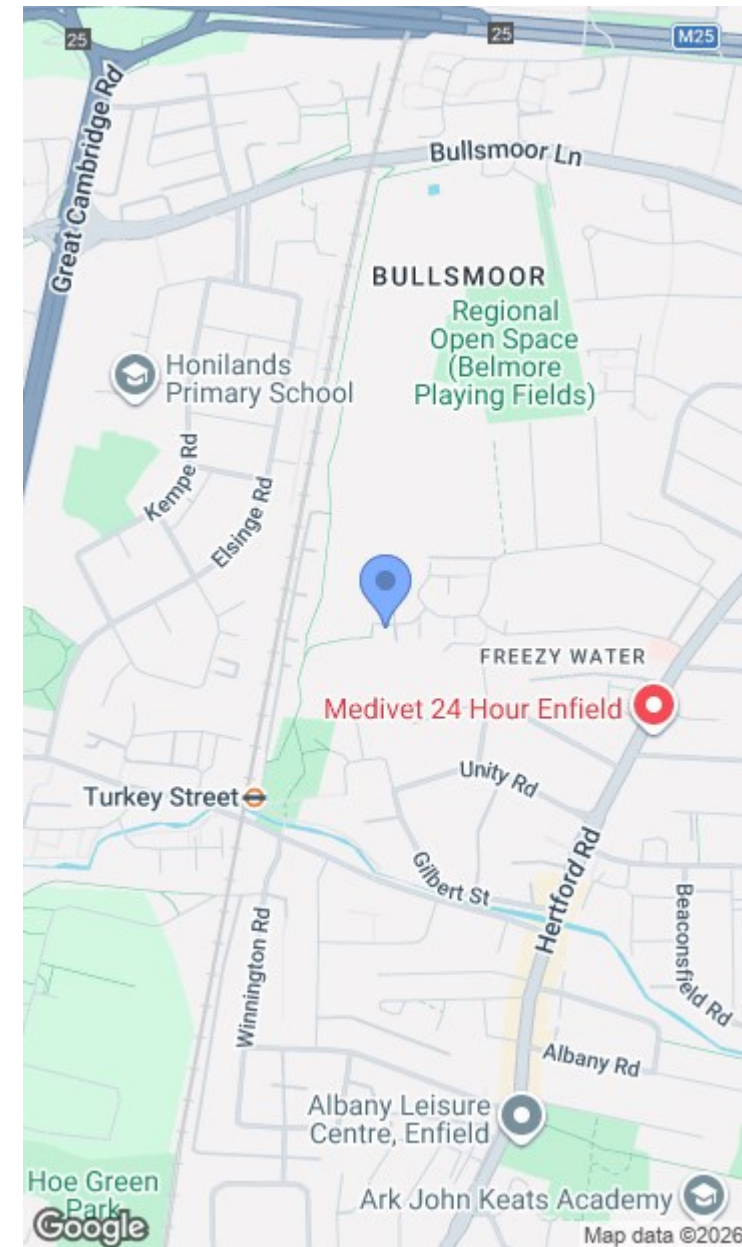
The flat features a spacious bedroom, providing a peaceful retreat for restful nights. This room is designed to accommodate your personal style, whether you prefer a minimalist approach or a more decorative touch.

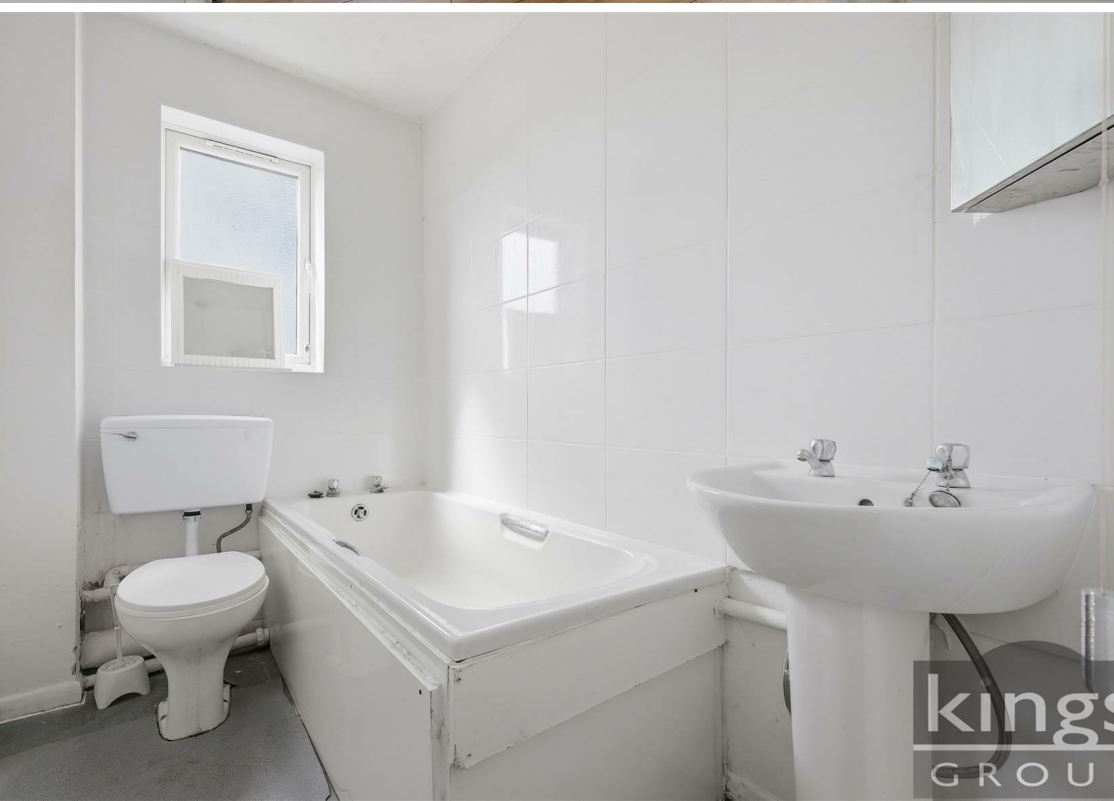
The bathroom is thoughtfully designed, offering all the essential amenities for your daily routines. It combines functionality with a touch of modern elegance, ensuring a pleasant experience every time.

Situated in Enfield, this property benefits from excellent transport links and local amenities. You will find a variety of shops, cafes, and parks nearby, making it easy to enjoy the best of urban living while still having access to green spaces.

This flat on Cobbett Close presents a wonderful opportunity for those looking to settle in a lively community with all the conveniences of city life. Whether you are a first-time buyer or seeking a rental investment, this property is sure to impress.

- One-bedroom first-floor apartment in Enfield London
- Potential rental income of £1400 PCM or £16,800 annually
- Two-way audio private entrance system
- Wonderful links and access into Tottenham Hale & London City
- Extended lease of circa 154 unexpired and peppercorn ground rent





First Floor

Approx. 30.9 sq. metres (332.1 sq. feet)



Total area: approx. 30.9 sq. metres (332.1 sq. feet)

All measurements have been taken as a guide to prospective buyers only and are not precise. This plan is for illustrative purposes only and no responsibility for any error, omission or misstatement. The services, systems and appliances shown have not been tested and no guarantee as to their operability or efficiency can be given. Measurements may have been taken from the widest area and may include wardrobe/cupboard space. No guarantee is given to any measurements including total areas. Buyers are advised to take their own measurements.

© @modephotouk | www.modephoto.co.uk
Plan produced using PlanUp.□

Cobbett Close



Associated Offices in London, Essex and Hertfordshire
Kings Head Office Tudor Lodge, Burton Lane, Goffs Oak, Hertfordshire EN7 6SY Tel: 01707-872000

