

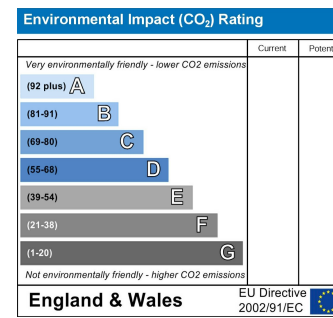
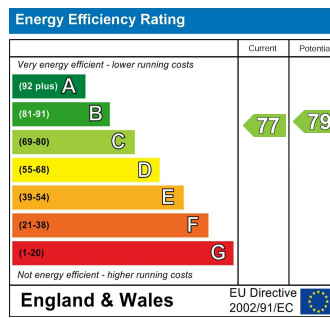


www.kings-group.net

326 Mare Street
London E8 1HA
Tel: 0208 510 0808

Cropley Street, London, N1 7GJ
No Onward Chain £113,750

Kings Group - Hackney are delighted to offer For Sale a 35% share of this well presented ONE BEDROOM APARTMENT on Cropley Street, N1. Offering approx 44m2 of living space, the property is comprised of one double bedroom, bathroom and open plan lounge/kitchen/diner. An ideal property for First Time Buyers looking to get onto the London property ladder, the apartment is within walking distance of Old Street Underground & Hoxton Overground stations, Alongside a number of local shops and amenities on Cropley Street, the property is within walking distance of Shoreditch and its abundance of themed bars, restaurants and retail stores. There is also good access to both the A1 & A10 as well as a plethora of public transport links in the vicinity. To arrange a viewing, please do not hesitate to get in touch.



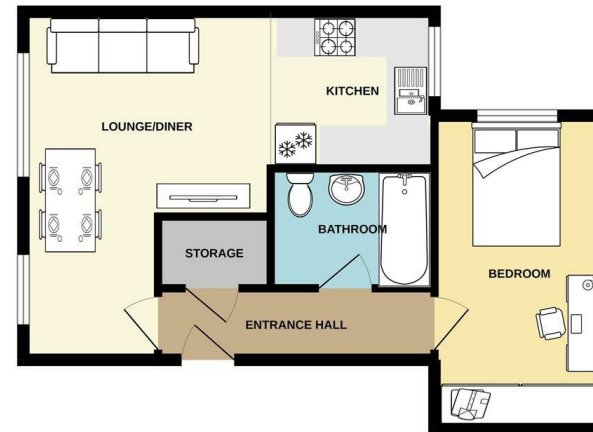
Entrance Hallway
13'09 x 3'51 (4.19m x 0.91m)

Bedroom
14'79 x 8'06 (4.27m x 2.59m)

Bathroom
7'87 x 5'82 (2.13m x 1.52m)

Lounge/Diner (Open Plan)
17'70 x 11'86 (5.18m x 3.35m)

Kitchen (Open Plan)
7'53 x 7'82 (2.13m x 2.13m)



1 BED APARTMENT

While every effort has been made to ensure the accuracy of the description contained herein, measurements of doors, windows, rooms and any other items are approximate and no responsibility is taken for any error, omission or misstatement. This plan is for illustrative purposes only and should be used as a guide by every prospective purchaser. The services, systems and appliances shown have not been tested and no guarantee as to their operability or efficiency can be given. Made with Intoplan 12/2011



Associated Offices in London, Essex and Hertfordshire
Kings Head Office Tudor Lodge, Burton Lane, Goffs Oak, Hertfordshire EN7 6SY Tel: 01707-872000

