



215 Graham Road, London

£499,950 Leasehold



215 Graham Road, London

326 Mare Street, Hackney, London, E8
1HA

0208 510 0808
www.kings-group.net

- Two Bedroom Flat
- Split Level
- Good Condition Throughout
- Double Bedrooms
- Open Plan Kitchen/Living
- Abundance of Natural Light
- Lease : 104 Years
- Sought after Location
- 0.1 Miles to Hackney Central Station
- EPC Rating : E

Kings Group are delighted to present this beautifully maintained two-bedroom flat, offering bright and spacious accommodation throughout. Located on the first floor of a characterful period conversion, the property is in excellent condition and benefits from an abundance of natural light.

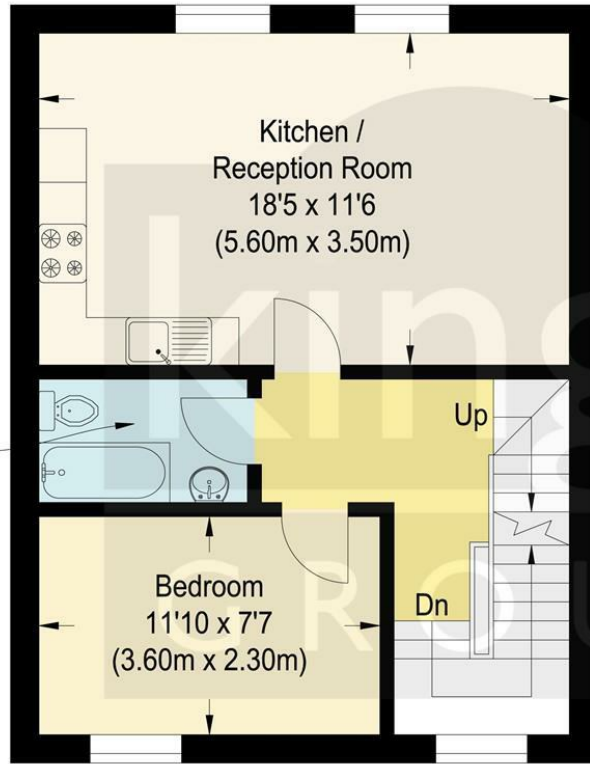
The heart of the home is the open-plan kitchen and living area, thoughtfully designed to create a modern and sociable space perfect for both everyday living and entertaining. The kitchen is well-equipped with contemporary fittings and ample storage, while the living space is warm and welcoming with large windows that enhance the airy feel.

Both bedrooms are well-proportioned, offering comfortable living and flexibility for use as a guest room, home office, or nursery. The stylish bathroom is finished to a high standard with quality fixtures and fittings.

Ideally situated within easy reach of excellent transport links, local shops, cafés, and green spaces, this property presents a fantastic opportunity for first-time buyers, professionals, or investors. Early viewing is highly recommended.

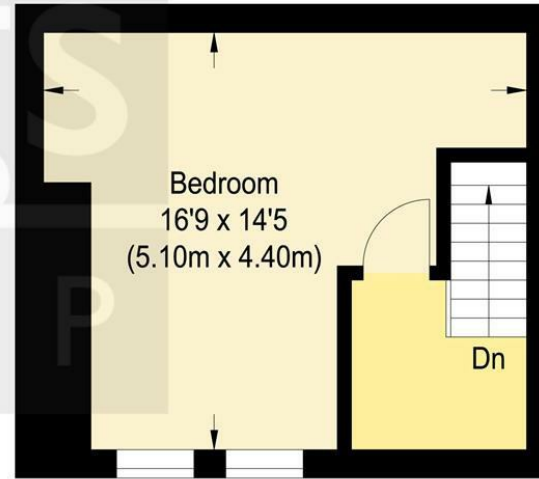


Bathroom
7'3 x 4'3
(2.20m x 1.30m)



First Floor

Second Floor



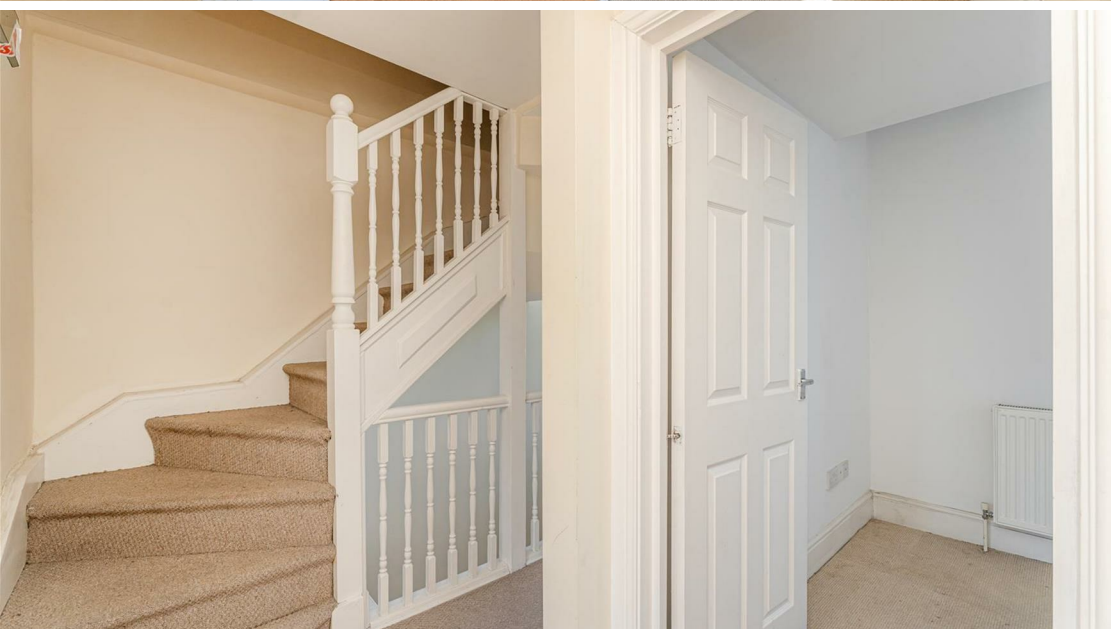
Third Floor

Graham Road

Approximate Gross Internal Floor Area : 68.0 sq m / 731.94 sq ft

Illustration for identification purposes only, measurements are approximate, not to scale.





326 Mare Street, Hackney, London, E8
1HA

0208 510 0808
www.kings-group.net



Zoopla.co.uk



rightmove.co.uk
The UK's number one property website

