



**28A Rutland Court,  
London**

**£1,200,000 Leasehold**





# 28A Rutland Court, London

326 Mare Street, Hackney, London, E8  
1HA

0208 510 0808  
[www.kings-group.net](http://www.kings-group.net)

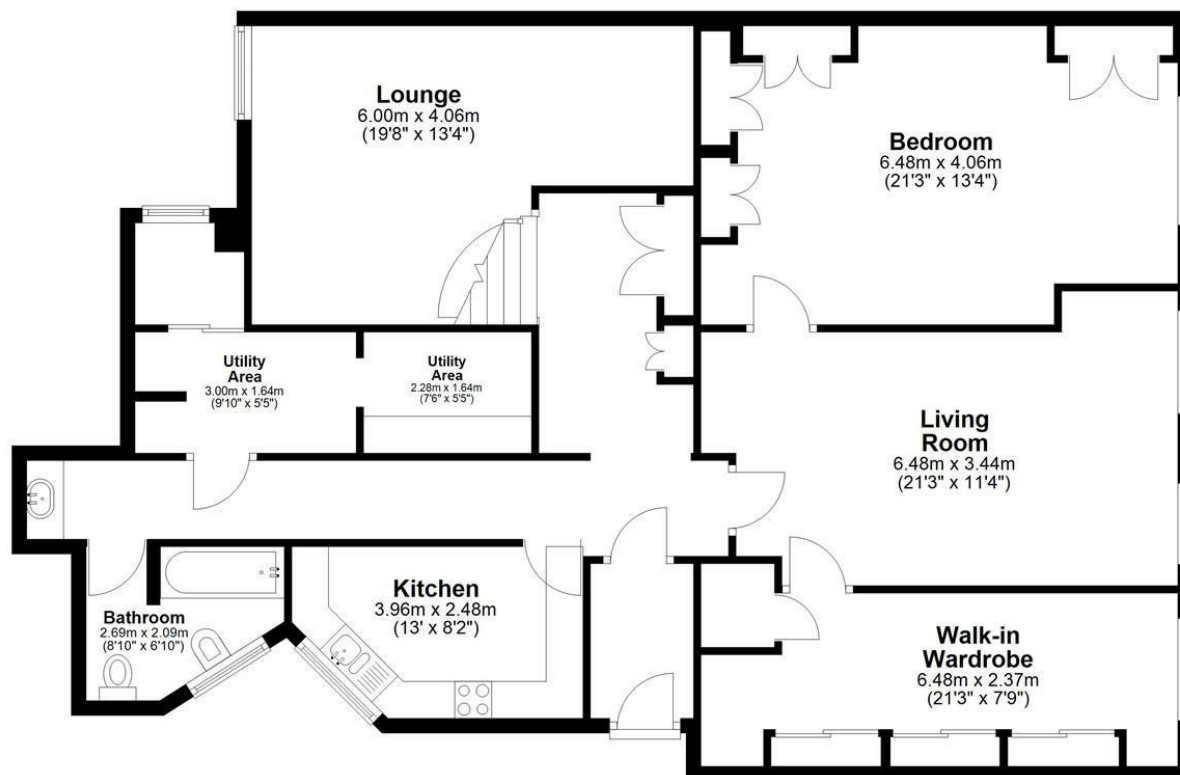
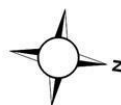
- Two Bedroom Flat
- Lower Ground Floor
- Good Condition Throughout
- Double Bedrooms
- Walk-in Wardrobe
- 1,440sqf
- Lease : 958 Years
- Excellent Location
- 0.7 Miles to South Kensington Station
- EPC Rating : D

Kings Group are delighted to present this well-proportioned apartment set within an elegant period building in the heart of South Kensington. The property offers bright and generously sized accommodation, benefiting from high ceilings, attractive proportions, and the added advantage of a large walk-in wardrobe.

While the apartment would benefit from some modernisation, it represents an excellent opportunity for a buyer to enhance and personalise the property. Ideal as a prime London residence or investment, it is well located for local amenities, transport links, and the world-class cultural attractions for which the area is renowned.

## Lower Ground Floor

Approx. 133.7 sq. metres (1439.5 sq. feet)



Total area: approx. 133.7 sq. metres (1439.5 sq. feet)

All measurements have been taken as a guide to prospective buyers only and are not precise. This plan is for illustrative purposes only and no responsibility for any error, omission or misstatement. The services, systems and appliances shown have not been tested and no guarantee as to their operability or efficiency can be given. Measurements may have been taken from the widest area and may include wardrobe/cupboard space. No guarantee is given to any measurements including total areas. Buyers are advised to take their own measurements.

© @modphotouk | www.modphoto.co.uk  
Plan produced using PlanUp. □

**Rutland Court**



THE PROPERTY MISDESCRIPTIONS ACT 1991. The agent has not tested any apparatus, equipment, fixtures or services and so cannot verify that they are in working order, or fit for the purpose. References to the Tenure of a property are based on information supplied by the vendor. The agent has not had sight of the Title documents. A buyer is advised to obtain verification from their Solicitor or Surveyor





326 Mare Street, Hackney, London, E8  
1HA

0208 510 0808

[www.kings-group.net](http://www.kings-group.net)



[Zoopla.co.uk](http://Zoopla.co.uk)



[rightmove.co.uk](http://rightmove.co.uk)  
The UK's number one property website

