



**2 Speechly Mews  
Alvington Crescent,  
London**

**£725,000 Freehold**





# 2 Speechly Mews Alvington Crescent, London

326 Mare Street, Hackney, London, E8  
1HA

0208 510 0808  
[www.kings-group.net](http://www.kings-group.net)

- Three Bedroom House
- Private Gated Access
- Great Condition Throughout
- Double Bedrooms
- Private Garden
- Lots of Natural Light
- Freehold
- Excellent Location
- 0.9 Miles to Hackney Central Station
- EPC Rating : C

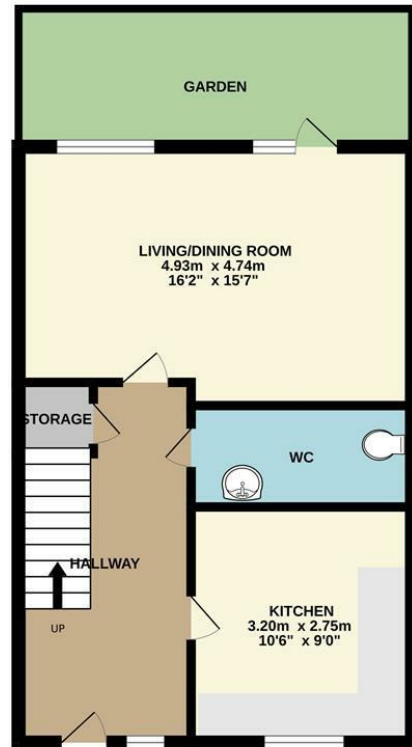
Kings Group are now in receipt of an offer for the sum of £720,000 for 2 Speechly Mews, Alvington Crescent, London E8 2NQ. Anyone wishing to place an offer on this property should contact Kings Group - Hackney on 0208 510 0808 before exchange of contracts.

Kings Group are delighted to present this impressive three-bedroom, two-bathroom mews house, located in a highly sought-after area. This beautifully designed property is perfect for families or professionals looking for a stylish and spacious home.

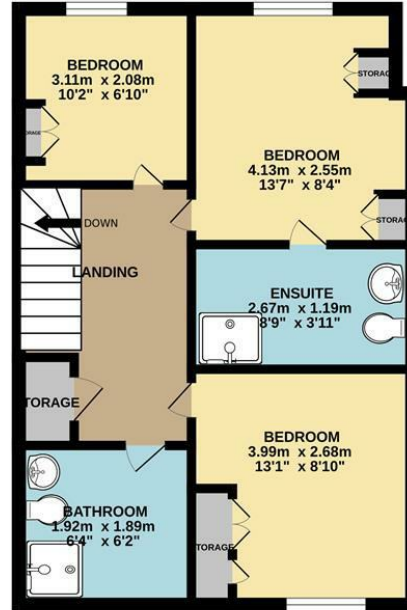
The ground floor features a bright and airy open-plan living area with a fully fitted contemporary kitchen, creating the perfect space for entertaining or relaxing. The property benefits from three generously sized bedrooms, including a luxurious master suite with its own en-suite bathroom for added comfort and privacy. A sleek and modern family bathroom serves the additional bedrooms, both of which are finished to a high standard.

With ample storage throughout and excellent transport links nearby, this home offers a fantastic opportunity to enjoy modern living in a vibrant and convenient location. Don't miss your chance to view this stunning property!

GROUND FLOOR



1ST FLOOR

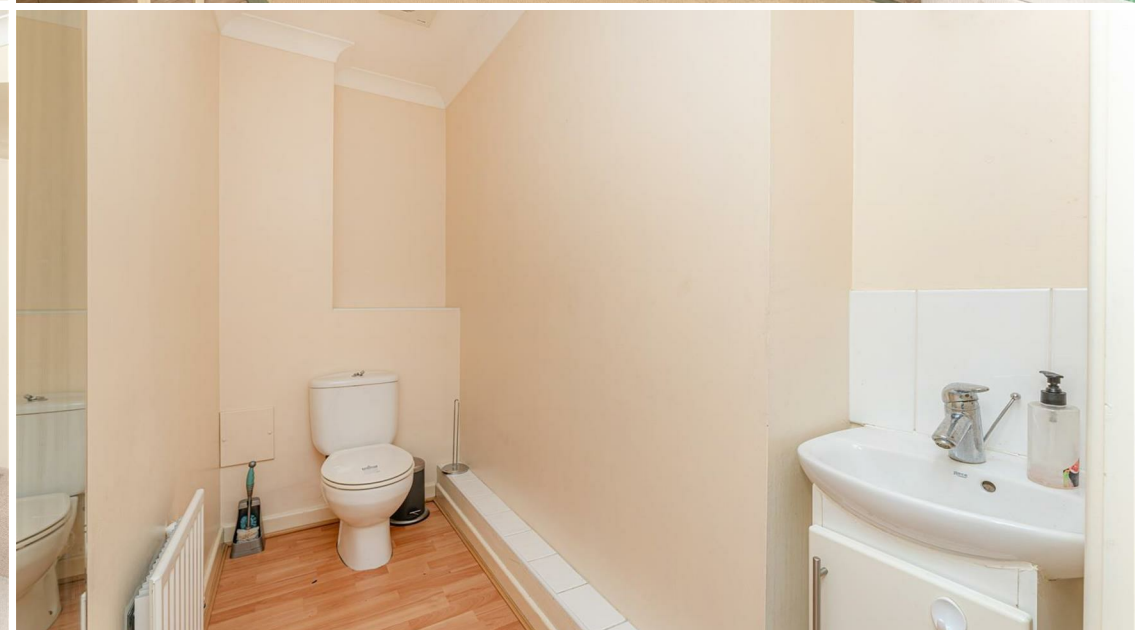


TOTAL FLOOR AREA : 84.0 sq.m. (904 sq.ft.) approx.

Whilst every attempt has been made to ensure the accuracy of the floorplan contained here, measurements of doors, windows, rooms and any other items are approximate and no responsibility is taken for any error, omission or mis-statement. This plan is for illustrative purposes only and should be used as such by any prospective purchaser. The services, systems and appliances shown have not been tested and no guarantee as to their operability or efficiency can be given.  
Made with Metropix ©2025



THE PROPERTY MISDESCRIPTIONS ACT 1991. The agent has not tested any apparatus, equipment, fixtures or services and so cannot verify that they are in working order, or fit for the purpose. References to the Tenure of a property are based on information supplied by the vendor. The agent has not had sight of the Title documents. A buyer is advised to obtain verification from their Solicitor or Surveyor



326 Mare Street, Hackney, London, E8  
1HA

0208 510 0808

[www.kings-group.net](http://www.kings-group.net)



**Zoopla.co.uk**



**rightmove.co.uk**  
The UK's number one property website

