

Mare Street, London, E8 1HA



£1,600 Per Month

This wonderful two bedroomed first floor flat offers a smart interior, bright living space and a lovely terrace. The property comprises spacious reception with modern open-plan kitchen, natural lit master bedroom with door leading to terrace, good-sized second bedroom, bathroom and pretty terrace. Situated on Mare Street, there are plenty of local shops and amenities in Hackney Central only moments away. For transport links Hackney Central Station (London Overground) and Hackney Downs Station (National Rail) are both on your doorstep.



Approximate Gross Internal Area :-
57 sq m / 613 sq ft

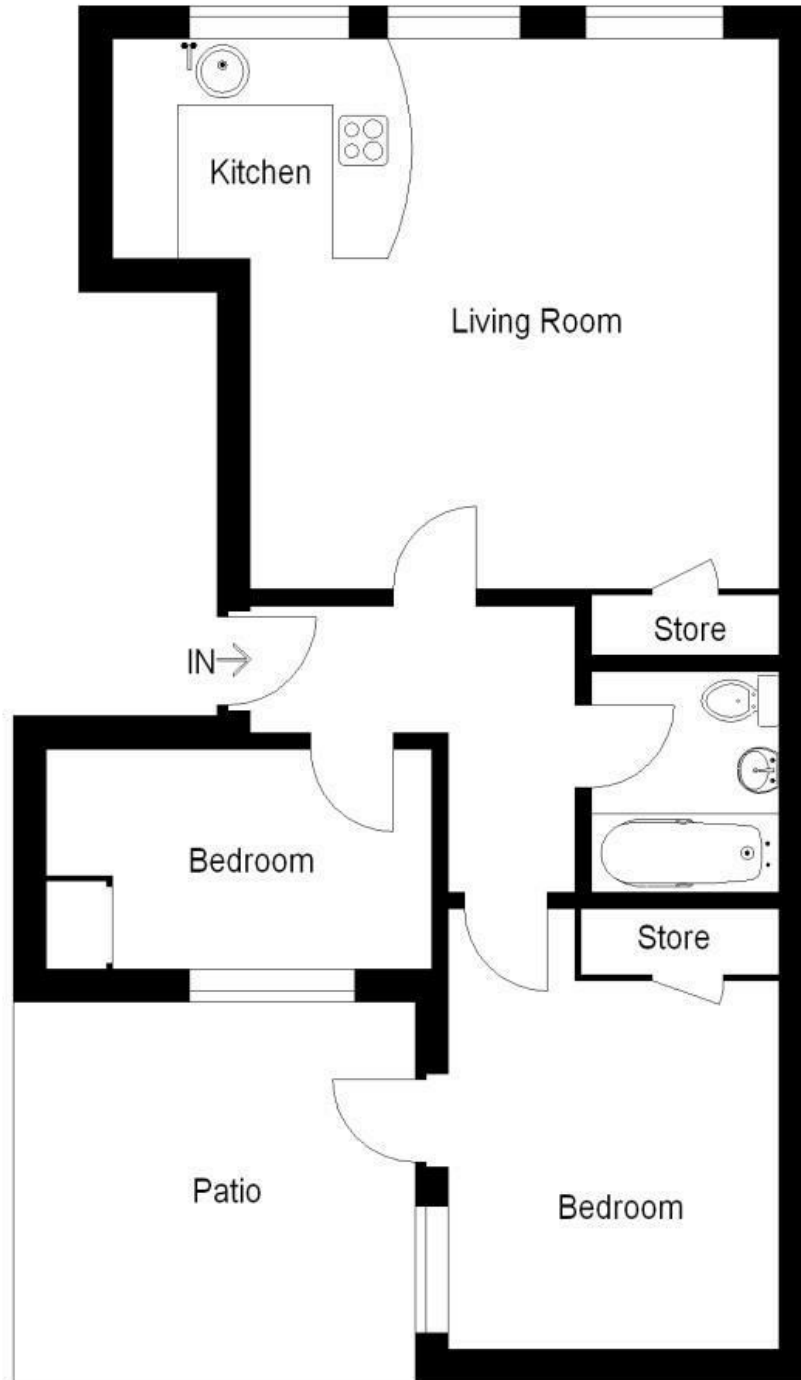


Illustration For Identification Purposes Only. Not To Scale (ID9320 Ref:5087)

Energy Efficiency Rating		Current	Potential
Very energy efficient - lower running costs			
(92 plus) A			
(81-91) B			
(69-80) C			
(55-68) D			
(39-54) E			
(21-38) F			
(1-20) G			
Not energy efficient - higher running costs			
England & Wales	EU Directive 2002/91/EC		

Environmental Impact (CO ₂) Rating		Current	Potential
Very environmentally friendly - lower CO ₂ emissions			
(92 plus) A			
(81-91) B			
(69-80) C			
(55-68) D			
(39-54) E			
(21-38) F			
(1-20) G			
Not environmentally friendly - higher CO ₂ emissions			
England & Wales	EU Directive 2002/91/EC		



Associated Offices in London, Essex and Hertfordshire
Kings Head Office Tudor Lodge, Burton Lane, Goffs Oak, Hertfordshire EN7 6SY Tel: 01707-872000

