



Maytree Crescent, CM17 0FW  
Harlow





# Maytree Crescent, CM17 0FW

First time buyers! This home will truly tick all your boxes.

Kings Group are delighted to offer this beautifully presented TWO BEDROOM FREEHOLD COACH HOUSE, situated within Maytree Crescent on the ever-popular Golden Park Development. Benefiting from a garage, visitor parking bay and a freehold tenure, this property represents an ideal purchase for first-time buyers, downsizers or investors alike. Conveniently positioned close to local shops, schools, parks and everyday amenities, this home combines modern living with excellent accessibility.

The property welcomes you with an inviting entrance hall, with stairs rising to the first floor accommodation. The spacious and bright open-plan lounge, kitchen and dining area provides the perfect setting for both relaxing and entertaining. The lounge enjoys an abundance of natural light and features a charming Juliet balcony, while the contemporary kitchen is fitted with a range of modern wall and base units offering ample storage and workspace.

The generous master bedroom provides comfortable accommodation, complemented by a well-proportioned second double bedroom which benefits from loft hatch access. Completing the accommodation is a stylish family bathroom fitted with a modern three-piece suite. Throughout, the property has been thoughtfully maintained and offers a ready-to-move-into opportunity for prospective purchasers.

The location is particularly appealing for commuters, with excellent access to the M11 and M25 via nearby junctions, as well as convenient links from Harlow Mill Train Station. Residents also benefit from the attractive surroundings and well-maintained communal areas of the development, with an estate charge of approximately £180 per annum contributing towards its upkeep. Viewing is highly advised to avoid disappointment.

## Offers In The Region Of £325,000



- TWO BEDROOM FREEHOLD COACH HOUSE
- ALLOCATED PARKING AND VISITOR BAY
- DOUBLE BEDROOMS
- JULIET BALCONY TO THE LOUNGE
- CLOSE TO LOCAL SHOPS, SCHOOLS, PARKS AND AMENITIES

### Property Information

Tenure: Freehold

Build: Standard Construction

Flood Risk: Rivers & Seas - Very Low, Surface Water- Very Low

Parking: Garage and Visitor Bay

Estate Charge: Approx. £180 Per Annum

### Entrance Hall

Single radiator, carpeted flooring, power points.

### Landing

Double glazed window to the rear aspect, carpeted flooring, single radiator, power points, storage cupboard (which currently has a tumble dryer in)

### Lounge/Kitchen/Diner (Open Plan) 14'02 x 17'96 (4.32m x 5.18m)

Lounge:

Double glazed window to the front aspect, wood flooring, power points, door to Juliet Balcony

Kitchen:

Double glazed window to the rear aspect, double radiator,, tiled splash backs, a range of wall and base units with flat top worksurfaces, integrated cooker, electric hob and oven, extractor fan, drainer unit, integrated fridge freezer, integrated dishwasher, integrated washing machine, boiler, power points.

### Bedroom One 11'78 x 14'41 (3.35m x 4.27m)

Double glazed windows to the front aspect, carpeted flooring, single radiator, power points, TV aerial point.

### Bedroom Two 8'36 x 14'99 (2.44m x 4.27m)

Double Glazed windows to the front aspect, single radiator, carpeted flooring, power points.

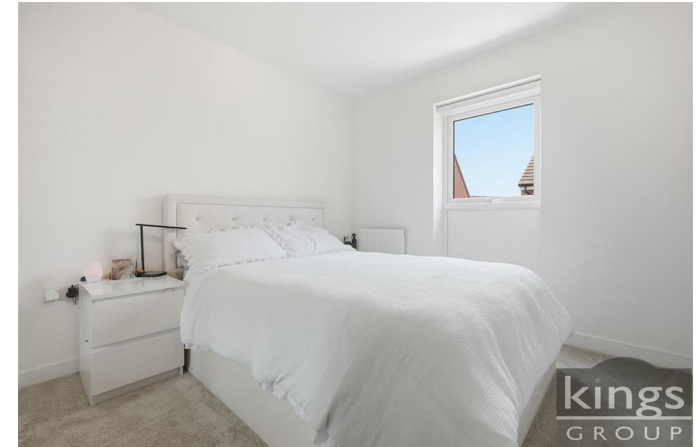
- GARAGE
- IDEAL PURCHASE FOR A FIRST TIME BUYER
- OPEN PLAN LOUNGE/KITCHEN/DINER
- BEAUTIFULLY MAINTAINED THROUGHOUT - READY TO MOVE INTO
- CLOSE TO THE M11/M25 VIA JUNCTION 7A PROVIDING DIRECT LINKS TO LONDON, STANSTED AND CAMBRIDGE

### Family Bathroom 5'62 x 6'59 (1.52m x 1.83m)

Double glazed window to the front aspect, panel enclosed bath with mixer taps, thermostatically controlled wall mounted shower, heated towel rail, wood flooring,, extractor fan, hand wash basin with mixer taps, low level flush W.C

### Garage

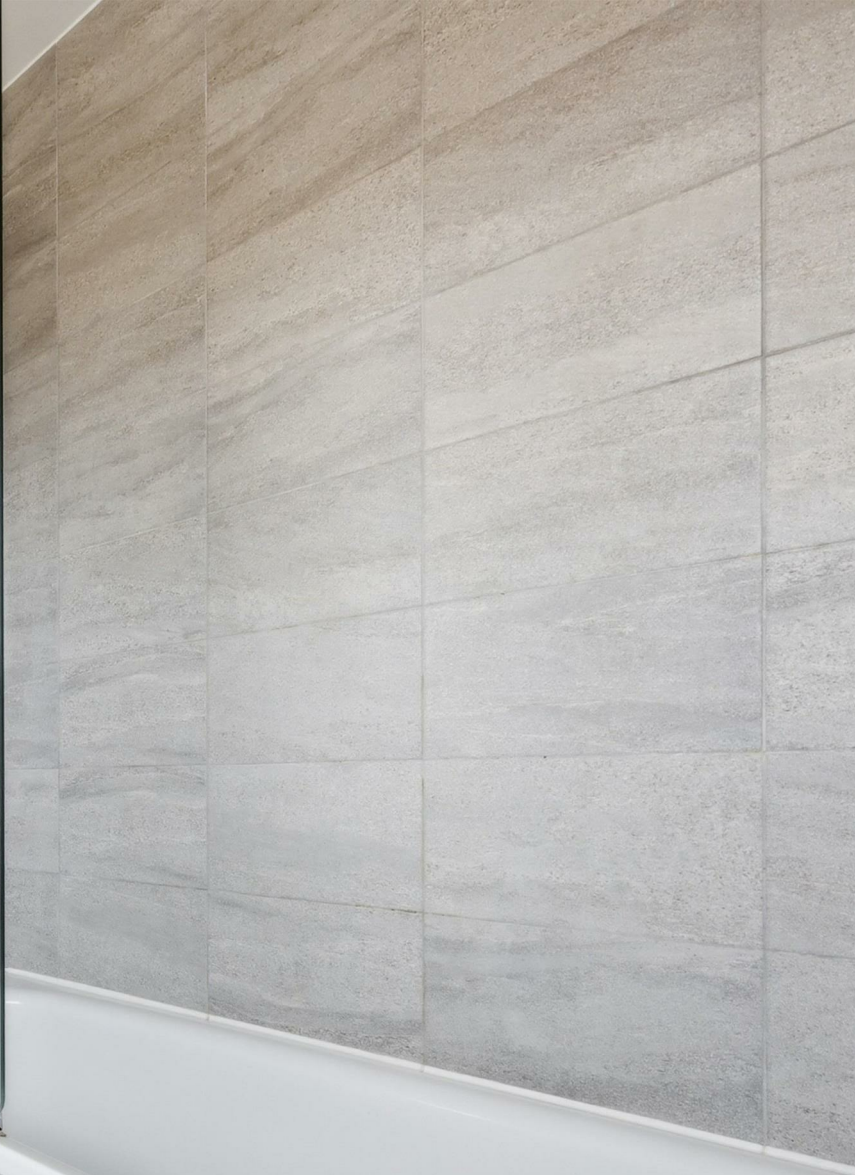
Up and over door.



kings  
GROUP

kings  
GROUP

kings  
GROUP



kings  
GROUP



Playing Captain  
5-10 years

Playing Captain  
5-10 years

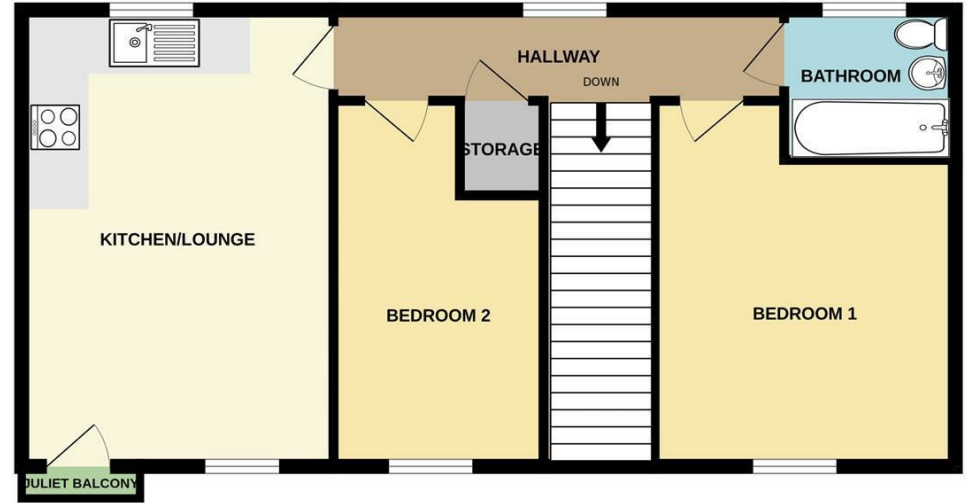
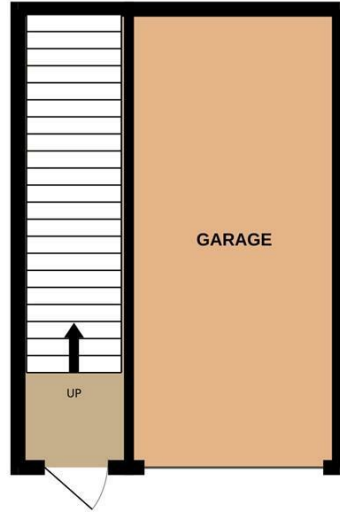
kings  
GROUP



Energy Efficiency Rating		Environmental Impact (CO <sub>2</sub> ) Rating	
Current	Potential	Current	Potential
Very energy efficient - lower running costs (92 plus) <b>A</b>		Very environmentally friendly - lower CO <sub>2</sub> emissions (92 plus) <b>A</b>	
(81-91) <b>B</b>		(81-91) <b>B</b>	
(69-80) <b>C</b>		(69-80) <b>C</b>	
(55-68) <b>D</b>		(55-68) <b>D</b>	
(39-54) <b>E</b>		(39-54) <b>E</b>	
(21-38) <b>F</b>		(21-38) <b>F</b>	
(1-20) <b>G</b>		(1-20) <b>G</b>	
Not energy efficient - higher running costs		Not environmentally friendly - higher CO <sub>2</sub> emissions	
England & Wales	EU Directive 2002/91/EC	England & Wales	EU Directive 2002/91/EC

GROUND FLOOR  
21.3 sq.m. (229 sq.ft.) approx.

1ST FLOOR  
61.5 sq.m. (662 sq.ft.) approx.



TOTAL FLOOR AREA : 63.9 sq.m. (688 sq.ft.) approx.

Whilst every attempt has been made to ensure the accuracy of the floorplan contained here, measurements of doors, windows, rooms and any other items are approximate and no responsibility is taken for any error, omission or mis-statement. This plan is for illustrative purposes only and should be used as such by any prospective purchaser. The services, systems and appliances shown have not been tested and no guarantee as to their operability or efficiency can be given.  
Made with Metropix ©2026

THE PROPERTY MISDESCRIPTIONS ACT 1991. The agent has not tested any apparatus, equipment, fixtures or services and so cannot verify that they are in working order, or fit for the purpose. References to the Tenure of a property are based on information supplied by the vendor. The agent has not had sight of the Title documents. A buyer is advised to obtain verification from their Solicitor or Surveyor. Note: These details are correct at time of going to press.

Unit 4, Church Langley Way, Harlow,  
Essex, CM17 9TE  
T: 01279 410084  
E:  
www.kings-group.net

